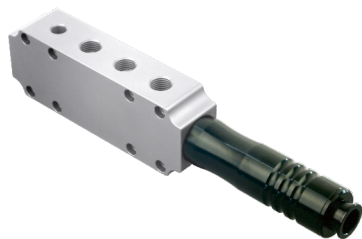


## EGX

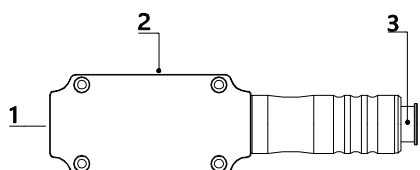
### Vacuum Generator

Vacuum Flow: 180 NL/min - 360 NL/min



#### Application/Features

- Products using multistage vacuum tube, engraved widely used in many industries.
- High vacuum flow rate and short corresponding time.
- Rich number of vacuum interfaces, more convenient application.
- Built-in silencer structure, excellent noise reduction performance.



- 1、 Air supply port
- 2、 Vacuum port
- 3、 Exhaust port

#### Specifications And Models

## EGX - 02 H

①                      ②                      ③

| ①   | Type       |
|-----|------------|
| EGX | EDX Series |

| ③ | Vacuum Tube Type |
|---|------------------|
| H | -94 kPa          |
| L | -74 kPa          |

| ②  | Specification           |
|----|-------------------------|
| 02 | Two stage vacuum tube   |
| 03 | Three-stage vacuum tube |

#### Performance Parameter

| Specifications And Models | Supply Gas Pressure (MPa) | Maximum Vacuum Degree (-kPa) | Maximum Vacuum Flow (NL/min) | Gas Consumption (NL/min) | Recommended Diameter Of Air Supply Port (mm) | Recommended Pipe Diameter For Vacuum Port(mm) |
|---------------------------|---------------------------|------------------------------|------------------------------|--------------------------|--|---|
| EGX-02H                   | 0.45                      | 94                           | 190                          | 120                      | 8  | 10  |
| EGX-02L                   | 0.35                      | 74                           | 180                          | 108                      | 8  | 10  |
| EGX-03H                   | 0.45                      | 94                           | 360                          | 120                      | 8  | 10  |
| EGX-03L                   | 0.35                      | 74                           | 330                          | 108                      | 8  | 10  |

#### Vacuum Flow Rate Of Different vacuum degrees (-kpa) (NL/min)

| Specifications And Models | Supply Gas Pressure(MPa) | Gas Consumption (NL/min) | 0   | 10  | 20   | 30   | 40   | 50   | 60   | 70   | 80   | 90  | Maximum Vacuum Degree (-kPa) |
|---------------------------|--------------------------|--------------------------|-----|-----|------|------|------|------|------|------|------|-----|------------------------------|
| EGX-02H                   | 0.45                     | 120                      | 190 | 136 | 100  | 58   | 40   | 36   | 25   | 17.8 | 11.7 | 3.1 | 94                           |
| EGX-02L                   | 0.35                     | 108                      | 180 | 127 | 92.0 | 60.0 | 44.0 | 27.0 | 11.0 | 2.4  | --   | --  | 74                           |
| EGX-03H                   | 0.45                     | 120                      | 360 | 175 | 12.0 | 80.0 | 44.0 | 32.7 | 24.5 | 17.8 | 11.6 | 3.2 | 94                           |
| EGX-03L                   | 0.35                     | 108                      | 330 | 152 | 110  | 64.0 | 50.0 | 26.7 | 11.5 | 3.6  | --   | --  | 74                           |

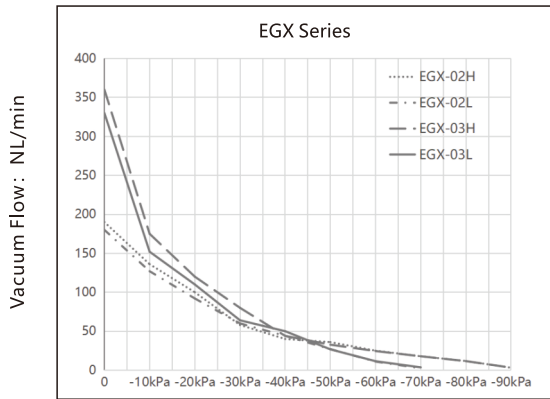
#### Suction Time Of Different Vacuum Degrees (-kpa) (s/L)

| Specifications And Models | Supply Gas Pressure(MPa) | Gas Consumption (NL/min) | 0   | 10   | 20   | 30   | 40   | 50   | 60   | 70   | 80   | 90   | Maximum Vacuum Degree (-kPa) |
|---------------------------|--------------------------|--------------------------|-----|------|------|------|------|------|------|------|------|------|------------------------------|
| EGX-02H                   | 0.45                     | 120                      | 190 | 0.04 | 0.08 | 0.14 | 0.24 | 0.41 | 0.66 | 1.02 | 1.52 | 3.27 | 94                           |
| EGX-02L                   | 0.35                     | 108                      | 180 | 0.04 | 0.08 | 0.13 | 0.21 | 0.37 | 0.63 | 0.98 | --   | --   | 74                           |
| EGX-03H                   | 0.45                     | 120                      | 360 | 0.03 | 0.07 | 0.14 | 0.21 | 0.37 | 0.62 | 0.99 | 1.46 | 2.91 | 94                           |
| EGX-03L                   | 0.35                     | 108                      | 330 | 0.03 | 0.05 | 0.10 | 0.18 | 0.36 | 0.56 | 0.87 | --   | --   | 74                           |

# EGX Series Vacuum Generator

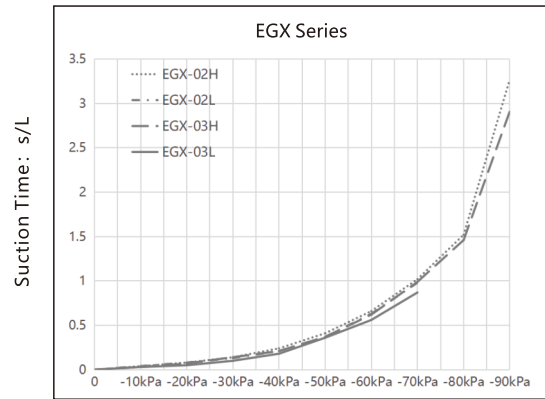


EGX Vacuum Flow Rate Of Different Vacuum Degrees (-kpa) (NL/min)



Vacuum Degree: -kPa

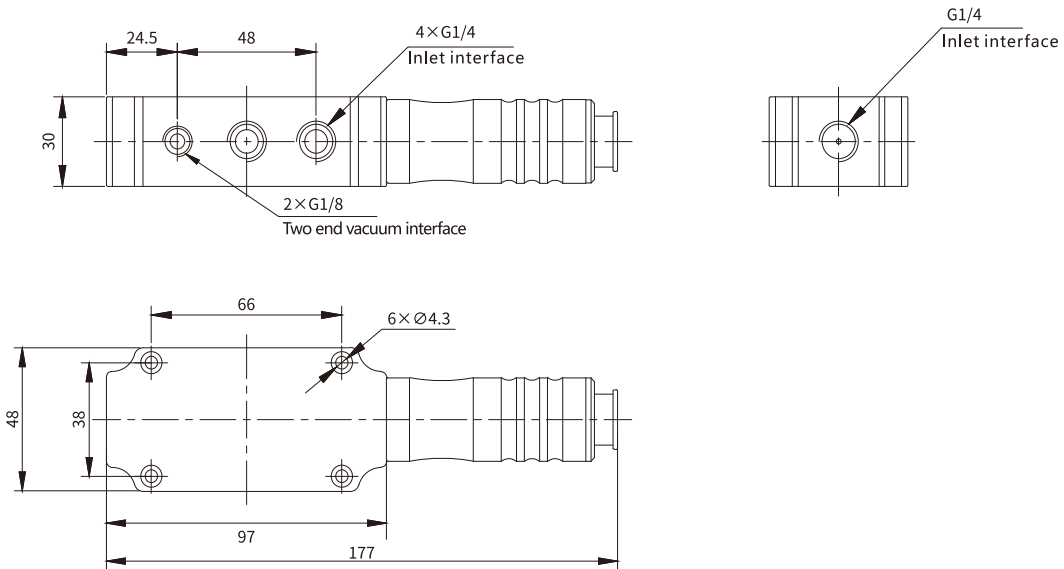
EGX Suction Time Of Different Vacuum Degrees (-kpa) (s/L)



Vacuum Degree: -kPa

## Main Dimension

### EGX-02H(L)



### EGX-03H(L)

