

ERL600

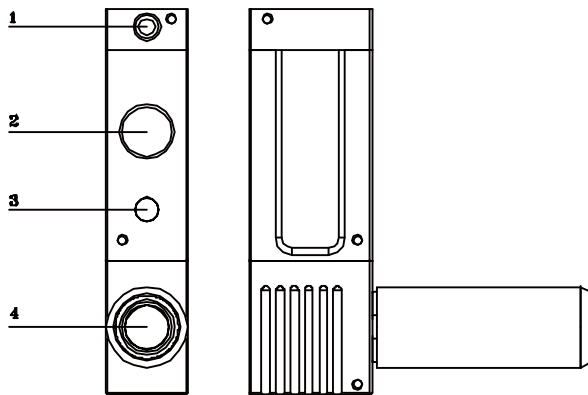
Vacuum Generator

Vacuum Flow: 600NL/min



Application/Features

- Products using multistage vacuum tube, engraved widely used in many industries.
- High vacuum flow rate and short corresponding time.
- Centralized air supply, optional air supply, destroy solenoid valve control.
- External silencer structure.



1. Air supply port(G1/4)
2. Vacuum port1 (G3/4) Vacuum suction cup port
3. Vacuum port 2 (G3/4) Vacuum monitoring port
4. Muffler exhaust port

Specifications

ERL600 H-P-K1-C

① ② ③ ④ ⑤

①	Type	②	Exhaust Specifications	③	Exhaust Specifications	④		⑤	
						Solenoid Valve Control Supply Valve	Break Valve	With Or Without Vacuum Pressure Gauge	
ERL600	ERL600 series	H	-94 kPa	None	External muffler (default)	None	None	None	None (default)
		L	-74 kPa	P	Ventilation	K1	•	None	
						K2	•	•	

Performance Parameter

Specifications And Models	Supply Gas Pressure(MPa)	Maximum Vacuum Degree(-kPa)	Maximum Vacuum Flow(NL/min)	Gas Consumption (NL/min)	Recommended Diameter Of Air Supply Port (mm)	Recommended Pipe Diameter For Vacuum Port (mm)
ERL600H-	0.5	94	600	270	8	12
ERL600L-	0.5	74	600	270	8	12

ERL600 Series Vacuum Generator



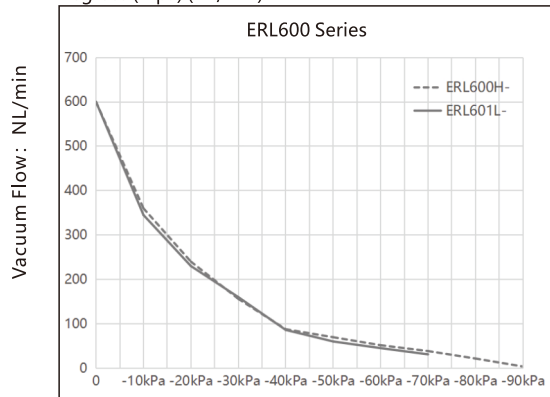
Vacuum Flow Rate Of Different Vacuum Degrees (-kpa) (NL/min)

Specifications And Models	Supply Gas Pressure(MPa)	Gas Consumption NL/min	0	10	20	30	40	50	60	70	80	90	Maximum Vacuum Degree(-kPa)
ERL600H-	0.45	120	600	180	123	78	44	35	26	19	11	2	94
ERL600L-	0.35	108	600	180	115	80	43	30	23	15	--	--	74

Suction Time Of Different Vacuum Degrees (-kpa) (s/L)

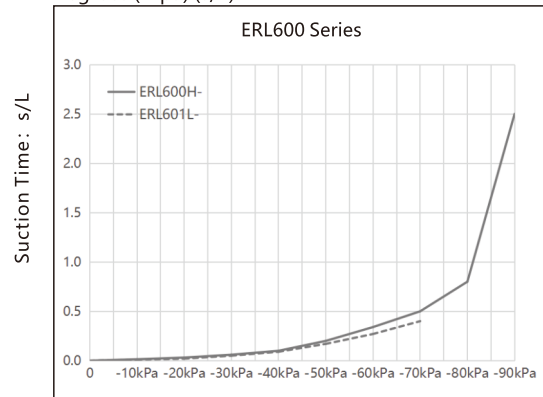
Specifications And Models	Supply Gas Pressure(MPa)	Gas Consumption NL/min	0	10	20	30	40	50	60	70	80	90	Maximum Vacuum Degree(-kPa)
ERL600H-	0.45	120	300	0.02	0.06	0.11	0.21	0.40	0.65	0.95	1.60	4.00	94
ERL600L-	0.35	108	300	0.02	0.05	0.10	0.18	0.33	0.53	0.80	--	--	74

ERL600 Vacuum Flow Rate Of Different Vacuum Degrees (-kpa) (NL/min)



Vacuum Degree: -kPa

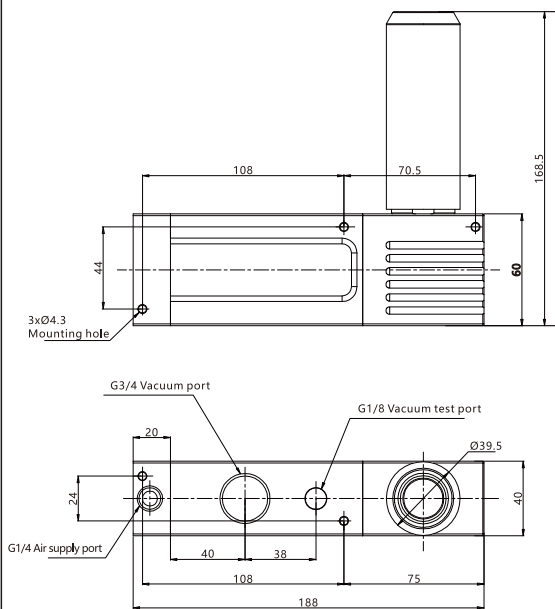
ERL600 Suction Time Of Different Vacuum Degrees (-kpa) (s/L)



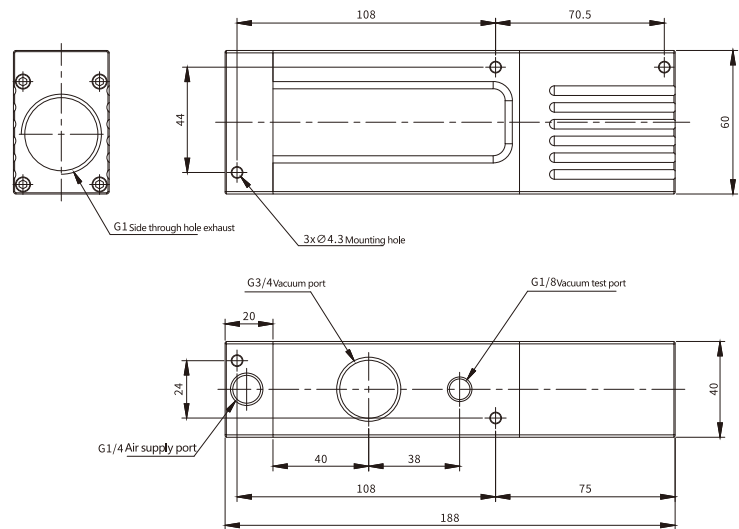
Vacuum Degree: -kPa

Main Dimension

ERL600-□(Standard)

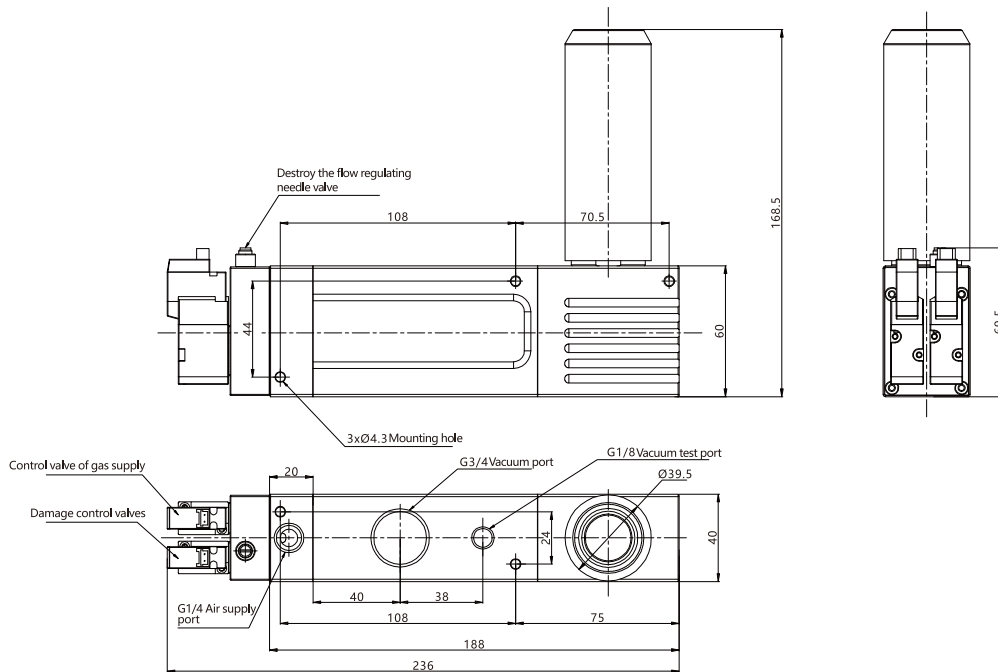


ERL600-□-P (Ventilation)



Main Dimension

ERL600-□-K2(Solenoid valve control)



ERL600-(Mounting dimension)

