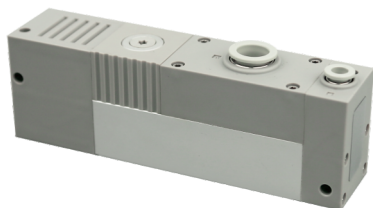


ERL100

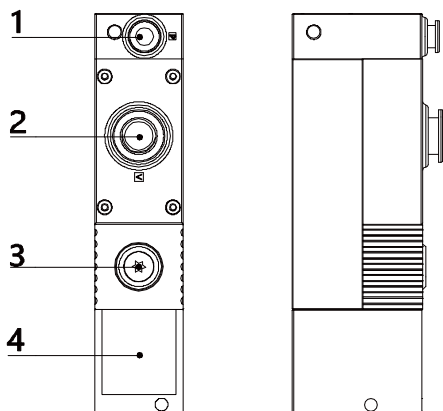
Vacuum Generator

Vacuum Flow: 100 NL/min



Applications/Features

- The product adopts multi-stage vacuum tube, which can be widely used in various industries.
- High vacuum flow and short response time.
- Centralized air supply, air supply and destruction control mode of solenoid valve.
- Comes with external muffler, excellent noise reduction performance.



1. Air supply port (insert $\phi 6$ gas pipe).
2. Vacuum port 1 (insert $\phi 12$ gas pipe) Vacuum pad port.
3. Vacuum port 2 (G1/8 female thread hole) vacuum detection port.
4. Exhaust vent.

Specifications

ERL100 - P - K1 - C

① ② ③ ④

①	Type
ERL100	ERL100 series

②	Exhaust Specifications
None	Built-in muffler (default)
P	Port exhaust

③	Solenoid Valve Control	
	Supply Valve	Break Valve
None	None	None
K1	•	None
K2	•	•

④	With Or Without Vacuum Pressure Gauge
None	None (default)
C	•

Performance Parameters

Model Specifications	Air Supply Pressure(MPa)	Maximum Vacuum -kPa	Maximum Vacuum Flow NL/min	Air Consumption NL/min	Recommended Diameter Of Air Supply Port (mm)	Recommended Diameter Of Vacuum Port (mm)
ERL100-	0.4	85	100	57	6	12

ERL100 Series Vacuum Generator



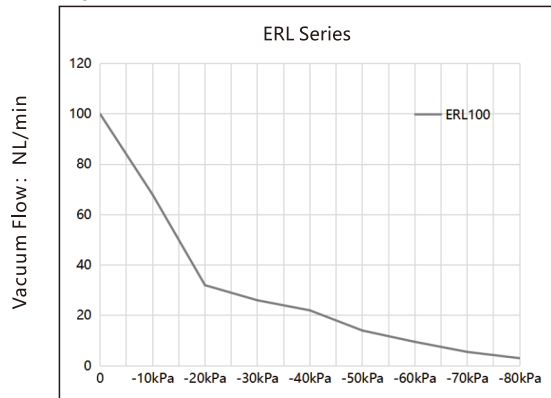
Vacuum Flow Rate (NL/min) For Different Vacuum Degrees (-kPa)

Specifications and Models	Air Supply Pressure(MPa)	Air Consumption NL/min	0	10	20	30	40	50	60	70	80	90	Maximum Vacuum -kPa
ERL100-	0.4	57	100	68	32	26	22	14	9.5	5.5	3	--	85

Pumping Time (s/L) For Different Vacuum Degrees (-kPa)

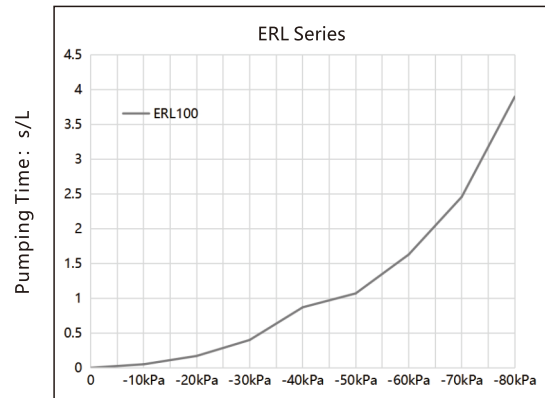
Specifications and Models	Air Supply Pressure(MPa)	Air Consumption NL/min	0	10	20	30	40	50	60	70	80	90	Maximum Vacuum -kPa
ERL100-	0.4	57	0	0.05	0.17	0.4	0.87	1.07	1.63	2.46	3.9	--	85

ERL Vacuum Flow Rate (NL/min) For Different Vacuum Degrees (-kPa)



Degree Of Vacuum: -kPa

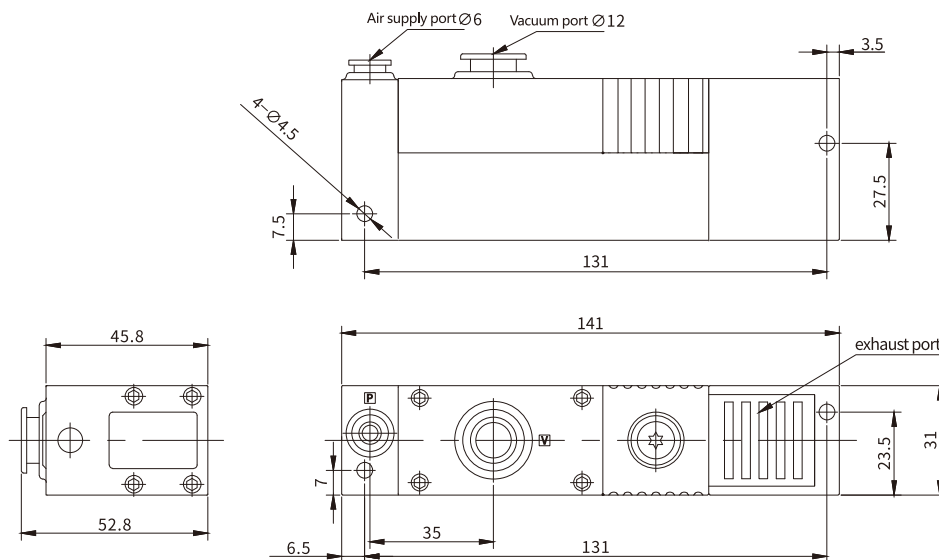
ERL Pumping Time (s/L) For Different Vacuum Degrees (-kPa)



Degree Of Vacuum: -kPa

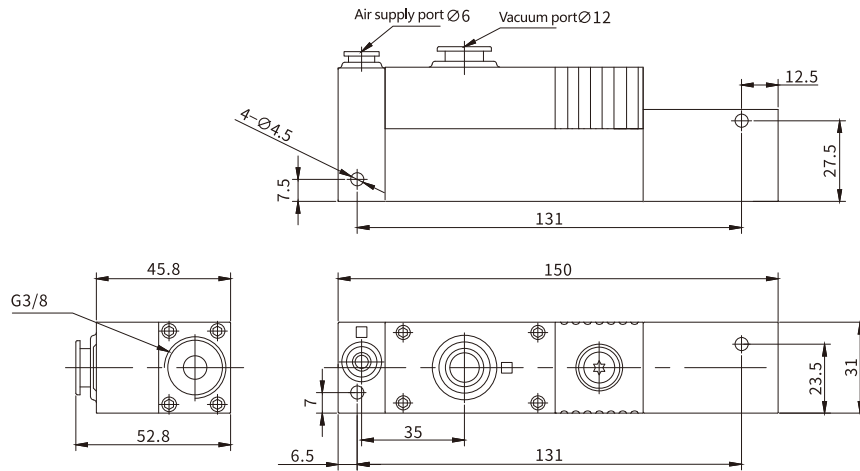
Main Dimension

ERL100

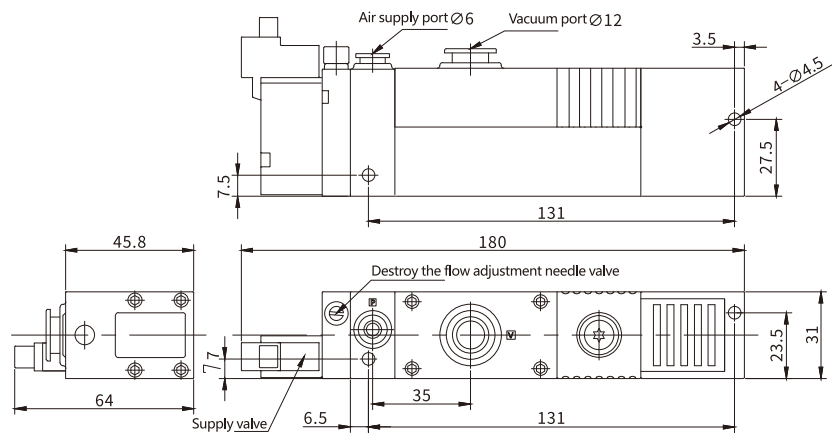


Main Dimension

ERL100-P



ERL100-K1



ERL100-K2

