

ERL300 Series Vacuum Generator



ERL300

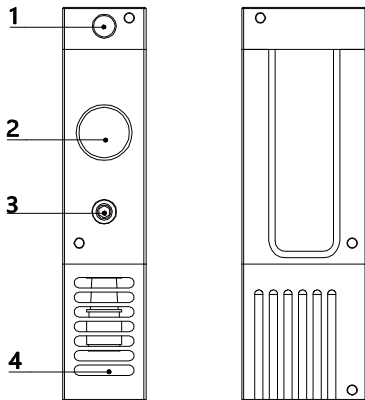
Vacuum Generator

Vacuum Flow: 300NL/min



Application/Features

- Products using multistage vacuum tube, engraved widely used in many industries.
- High vacuum flow rate and short corresponding time.
- Centralized air supply, optional air supply, destroy solenoid valve control.
- External silencer structure.



1. Air supply port (G1/4)
2. Vacuum port1 (G3/4) Vacuum suction cup port
3. Vacuum port 2 (G1/8) Vacuum monitoring port
4. Exhaust port

Specifications

ERL300 H-P-K1-C

① ② ③ ④ ⑤

①	Type	②	Exhaust Specifications	③	Exhaust Specifications	④ Solenoid Valve Control		⑤	With Or Without Vacuum Pressure Gauge
						Supply Valve	Break Valve		
ERL300	ERL300 series	H	-94 kPa	None	Built-in muffler (default)	None	None	None	None (default)
		L	-74 kPa	P	Port exhaust	K1	•	None	•
						K2	•	•	

Performance parameters

Model Specifications	Air Supply Pressure(MPa)	Maximum Vacuum -kPa	Maximum Vacuum Flow NL/min	Air Consumption NL/min	Recommended Diameter Of Air Supply Port (mm)	Recommended Diameter Of Vacuum Port (mm)
ERL300H-	0.45	92	300	120	8	12
ERL300L-	0.35	74	300	108	8	12

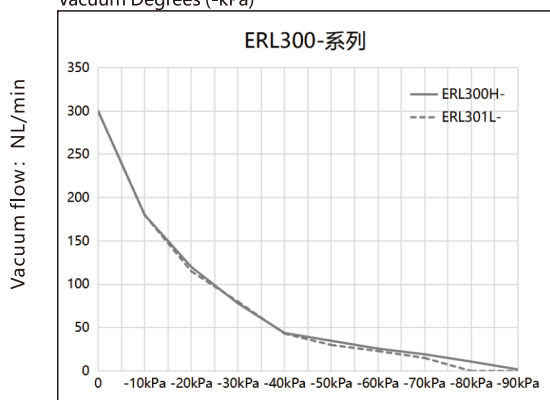
Vacuum Flow Rate (NL/min) For Different Vacuum Degrees (-kPa)

Specifications and Models	Air Supply Pressure	Air Consumption NL/min	0	10	20	30	40	50	60	70	80	90	Maximum Vacuum -kPa
ERL300H-	0.45	120	300	180	123	78	44	35	26	19	11	2	94
ERL300L-	0.35	108	300	180	115	80	43	30	23	15	--	--	74

Pumping Time (s/L) For Different Vacuum Degrees (-kPa)

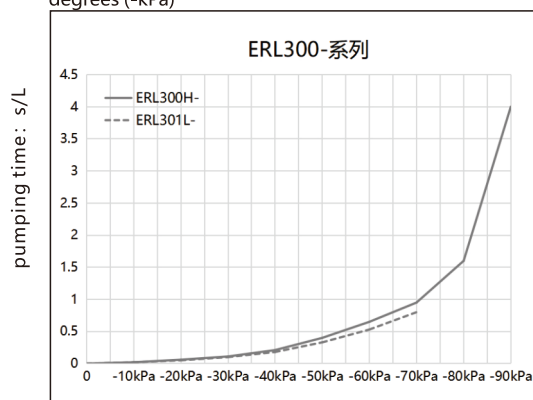
Specifications and Models	Air Supply Pressure	Air Consumption NL/min	0	10	20	30	40	50	60	70	80	90	Maximum Vacuum -kPa
ERL300H-	0.45	120	300	0.02	0.06	0.11	0.21	0.40	0.65	0.95	1.60	4.00	94
ERL300L-	0.35	108	300	0.02	0.05	0.10	0.18	0.33	0.53	0.80	--	--	74

ERL300 Vacuum Flow Rate (NL/min) For Different Vacuum Degrees (-kPa)



degree of vacuum: -kPa

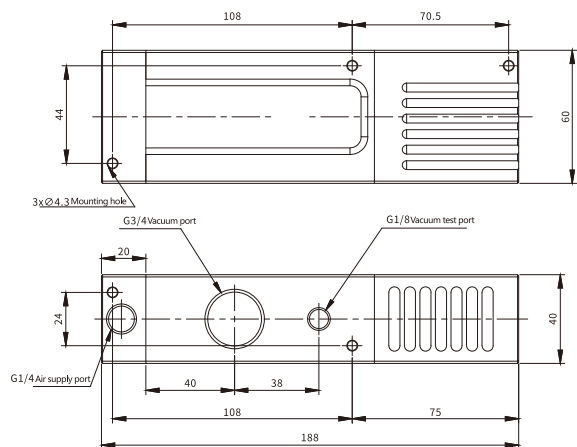
ERL300 Pumping time (s/L) for different vacuum degrees (-kPa)



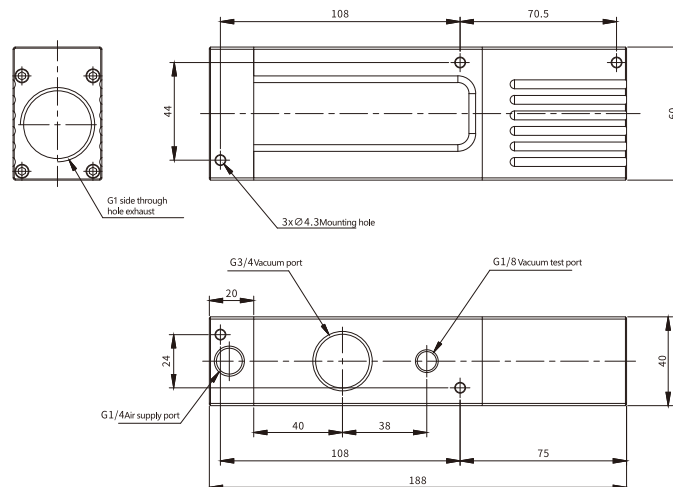
degree of vacuum: -kPa

Main Dimension

ERL300-□ (Standard)



ERL300-□-P (Ventilation)

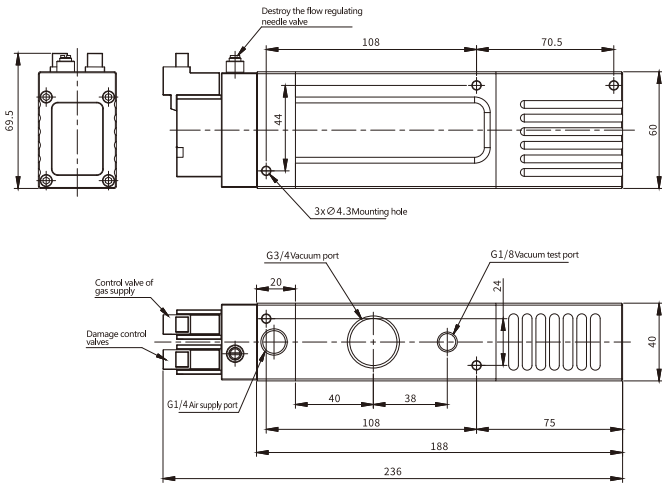


ERL300 Series Vacuum Generator



Main Dimension

ERL300-□-K2(Solenoid valve control)



ERL300-(Mounting dimension)

