

How to Order ?

Series No.	Cushion Type	Type No.	Bore	X	Stroke	Adjustable stroke	Magnet No.	Seal material	Mounting type	Thread type
	C: Air cushion	32 80	25	10	Blank: without magnet S: with magnet		Blank: No CA CB CR LB FA FB IJ YJ YCJ BJ ...	Blank: G P: PT T: NPT		
TB: Round type barrel XB: X type barrel		40 ... 50 100 63	50 75 ...	20 30 40 50 75 100		Blank: standard material (NBR seal) V: VITON seal				
		Blank: basic type D: Double shaft type J: Double shaft and adjustable type T: Multi-position type								

Order Example:

TBC series, double shaft air cylinder, bore 40mm, stroke 50mm, with magnet, NBR seal, CA mounting accessory, NPT thread.

EPR code is: TBC40X50-S-CA-T

Note: If cylinder with several different mounting accessories, please use this sequential coding: CA/CB/CR/LB/FA/FB/IJ/YJ/BJ/FD

Product Features

* Provided with adjustable cushion on both end covers to make sure the cylinder works very smoothly, safely and with low noise.

* With self lubricating bearing, the piston rod is lubrication free.

* Magnet and sufficient fixing styles are available.

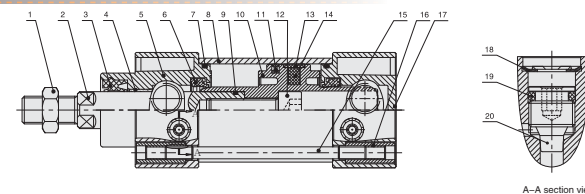
Specifications

Bore Size (mm)	32	40	50	63	80	100
Acting type	Double Acting					
Working medium	Clean Air(40 μm filtration)					
Working pressure (MPa)	0.1-1.0					
Guaranteed pressure (MPa)	1.5					
Working temperature (°C)	-20-80(Dry air)					
Speed range (mm/s)	50-800					
Cushion type	Adjustable Cushion					
Cushion stroke (mm)	25		24		30	
Mounting type	LB FA FB CA CB CR TC TCM					
Port size ①	G1/8		G1/4		G1/2	

① NPT, PT port size is optional.

Bore (mm)	Standard stroke (mm)	Max. stroke (mm)
32	25 50 75 80 100 125 150 160 175 200 250 300 350 400 450 500	1900
40	25 50 75 80 100 125 150 160 175 200 250 300 350 400 450 500 600 700 800	1900
50-250	25 50 75 80 100 125 150 160 175 200 250 300 350 400 450 500 600 700 800 900 1000	1900

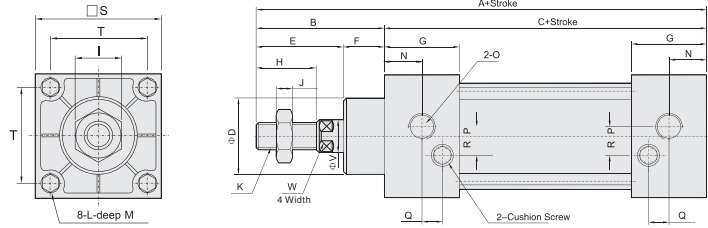
Internal structure



NO.	Part name	Material
1	Nut	Carbon steel
2	Piston rod	S45C hard chrome carbon steel
3	Piston rod seal	TPU
4	Self lubricating bearing	Bronze powder
5	Head cover	Aluminum alloy
6	Cushion seal	NBR
7	O-ring	NBR
8	Barrel	Aluminum alloy
9	O-ring	NBR
10	Piston	Aluminum alloy
11	Piston seal	NBR
12	Screw	Carbon steel
13	Wear ring	PTFE
14	Magnet	Plastic
15	Tie rod	Carbon steel
16	Tie rod nut	Carbon steel
17	Rear cover	Aluminum alloy
18	Retainer ring	Spring steel
19	O-ring	NBR
20	Nut	Brass

Main Dimensions

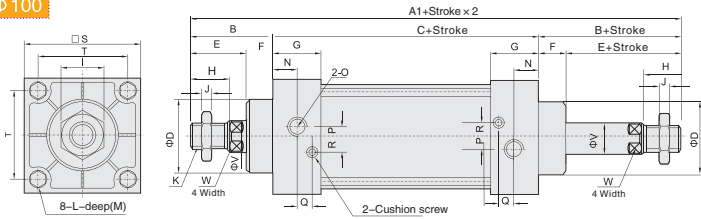
TBC $\Phi 32 - \Phi 100$



Bore/Sign	A	B	C	D	E	F	G	H	I	J	K	L
32	140	47	93	26	32	15	27.5	22	17	6	M10 x 1.25	M6 x 1
40	142	49	93	32	34	15	27.5	24	17	7	M12 x 1.25	M6 x 1
50	150	57	93	38	42	15	27.5	32	23	8	M16 x 1.5	M6 x 1
63	153	57	96	38	42	15	27.5	32	23	8	M16 x 1.5	M8 x 1.25
80	182	75	107	46	54	21	33	40	26	10	M20 x 1.5	M10 x 1.5
100	188	75	113	46	54	21	33	40	26	10	M20 x 1.5	M10 x 1.5

Bore/Sign	M	N	O	P	Q	R	S	T	V	W
32	13	14	1/8"	3.5	7	6.5	45	33	12	10
40	13	13.5	1/4"	5	5.5	8.5	50	37	16	14
50	13	14.5	1/4"	8.5	3	11	62	47	20	17
63	13	15	3/8"	7	5	9.5	75	56	20	17
80	15.5	16.5	3/8"	7	8	10	94	70	25	22
100	15.5	16.5	1/2"	7.5	8	13	112	84	25	22

TBCD $\Phi 32 - \Phi 100$



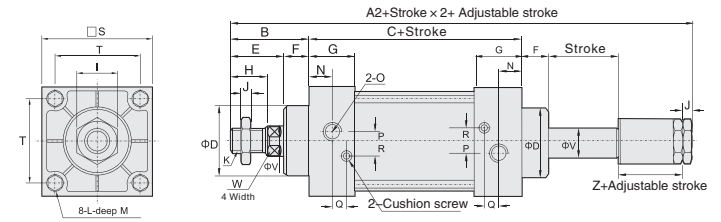
Bore/Sign	A1	B	C	D	E	F	G	H	I	J	K	L
32	187	47	93	26	32	15	27.5	22	17	6	M10 x 1.25	M6 x 1
40	191	49	93	32	34	15	27.5	24	17	7	M12 x 1.25	M6 x 1
50	207	57	93	38	42	15	27.5	32	23	8	M16 x 1.5	M6 x 1
63	210	57	96	38	42	15	27.5	32	23	8	M16 x 1.5	M8 x 1.25
80	257	75	107	46	54	21	33	40	26	10	M20 x 1.5	M10 x 1.5
100	263	75	113	46	54	21	33	40	26	10	M20 x 1.5	M10 x 1.5

Bore/Sign	M	N	O	P	Q	R	S	T	V	W
32	13	14	1/8"	3.5	7	6.5	45	33	12	10
40	13	13.5	1/4"	5	5.5	8.5	50	37	16	14
50	13	14.5	1/4"	8.5	3	11	62	47	20	17
63	13	15	3/8"	7	5	9.5	75	56	20	17
80	15.5	16.5	3/8"	7	8	10	94	70	25	22
100	15.5	16.5	1/2"	7.5	8	13	112	84	25	22

Note: 1. With magnet and without magnet, the dimensions are same.
2. XBC series dimensions is same as TBC.

Main Dimensions

TBCJ $\Phi 32 - \Phi 100$



Bore/Sign	A2	B	C	D	E	F	G	H	I	J	K	L
32	182	47	93	26	32	15	27.5	22	17	6	M10 x 1.25	M6 x 1
40	185	49	93	32	34	15	27.5	24	17	7	M12 x 1.25	M6 x 1
50	196	57	93	38	42	15	27.5	32	23	8	M16 x 1.5	M6 x 1
63	199	57	96	38	42	15	27.5	32	23	8	M16 x 1.5	M8 x 1.25
80	242	75	107	46	54	21	33	40	26	10	M20 x 1.5	M10 x 1.5
100	248	75	113	46	54	21	33	40	26	10	M20 x 1.5	M10 x 1.5

Bore/Sign	M	N	O	P	Q	R	S	T	V	W	Z
32	13	14	1/8"	3.5	7	6.5	45	33	12	10	21
40	13	13.5	1/4"	5	5.5	8.5	50	37	16	14	21
50	13	14.5	1/4"	8.5	3	11	62	47	20	17	23
63	13	15	3/8"	7	5	9.5	75	56	20	17	23
80	15.5	16.5	3/8"	10	8	10	94	70	25	22	29
100	15.5	16.5	1/2"	7.5	8	13	112	84	25	22	29

