

## SZPT/SZPX

Heavy Duty without Buffer

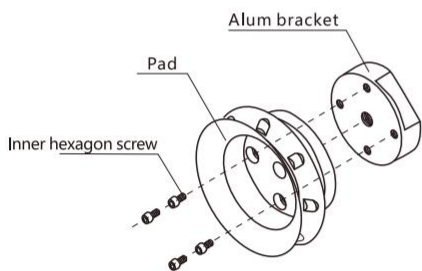


### How to Order?

Series No.	Stent Model	Pad Diameter	Pad Model	Pad Material	Vacuum Inlet Mounting	Installation and Connection Mode
SZP: SZP Series	T: Vertical X: Lateral	32: Ø32 40: Ø40 50: Ø50 63: Ø63 80: Ø80 100: Ø100 125: Ø125	H: Heavy Duty Model HB: Heavy Duty Bellows Type	N: NBR S: Silicone Rubber	Code Blank SZPT Blank B01 SZPX Rc1/8	
Code	Mounting	Thread Diameter	Ø32	Ø40, Ø50	Ø63, Ø80	Ø100, Ø125
A14	Male Thread	M14X1		•		
A16	Male Thread	M16X1.5			•	•
B5	Female Thread	M5X0.8	•			
B8		M8X1.2	•	•	•	
B10		M10X1.5	•	•	•	
B12		M12X1.75			•	•
B16		M16X1.5			•	•
B8	Female Thread	M8X1.25		•		
B10		M10X1.5		•	•	•
B12		M12X1.75			•	•

**Order Example:** SZP series heavy duty vacuum pad without buffer, direction vertical, diameter Ø40, heavy duty model, NBR, vacuum inlet connection: Rc1/8; Installation and connection mode: male thread, thread diameter M14X1.0. ERP code is SZPX40HN-B01-A14.

### How to Order Bracket ?

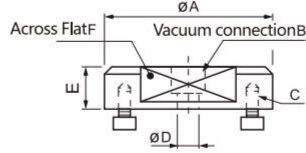


Pad Diameter	Bracket without Buffer Model		
	SZPT		SZPX
	Female Thread	Male Thread	Female Thread
Ø32	B5 SZPT0-B8 B10	Vacuum connection SZPT0-A14	Installation connection SZPX0-B01-B8 B10
Ø40, Ø50	B8 SZPT1-B10	Vacuum connection SZPT1-A14	Installation connection SZPX1-B01-B8 B10
Ø63, Ø80	B8 SZPT2-B10 B12 B16	Vacuum connection SZPT2-A16	Installation connection SZPX2-B01-B10 B12
Ø100-Ø125	B12 SZPT3-B16	Vacuum connection SZPT3-A16	Installation connection SZPX3-B01-B10 B12

# SZPT/SZPX Heavy Duty without Buffer

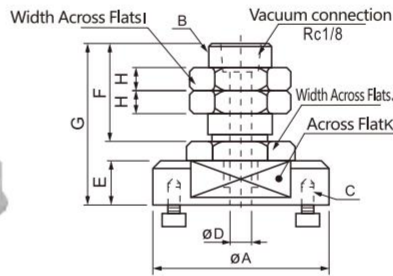


## SZPT Female Thread without Buffering



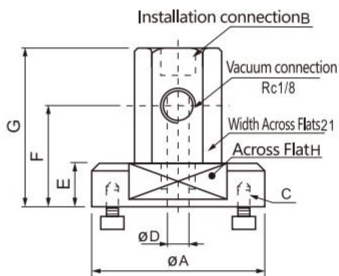
Model	ØA	B	C	ØA	E	F
SZPT0 -B5 -B8 -B10	26	M5X0.8	3-M2.5X0.45	2	11.5	24
		M8X1.25		6		
		M10X1.5		6		
SZPT1 -B8 -B10	28	M8X1.25 M10X1.5	3-M3X0.5	6	11.5	24
				6		
SZPT2 -B8 -B10 -B12 -B16	45	M8X1.25 M10X1.5 M12X1.75 M16X1.5	4-M4X0.7	8	11.5	37
				8		
				8		
				8		
SZPT3 -B12 -B16	70	M12X1.75 M16X1.5	4-M5X0.8	10	13	60
				10		

## SZPT Male Thread without Buffering



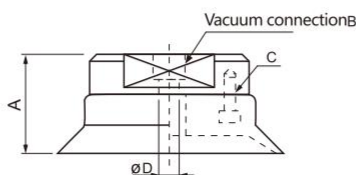
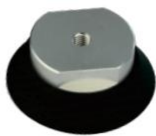
Model	ØA	B	C	ØD	E	F	G	H	I	J	K
SZPT0-A14	26	M14X1	3-M2.5X0.45	3	11.5	25	41.5	5	19	19	22
SZPT1-A14	28	M14X1	3-M3X0.5	3	11.5	25	41.5	5	19	19	24
SZPT2-A16	45	M16X1.5	4-M4X0.7	8	11.5	25	41.5	6	22	24	37
SZPT3-A16	70	M16X1.5	4-M5X0.8	8	13	25	43	6	22	24	60

## SZPX Female Thread without Buffering



Model	ØA	B	C	ØD	E	F	G	H	
SZPX1-B01-B8 SZPX1-B01-B10	26	M8X1.25 M10X1.5	3-M2.5X0.45	3	11.5	15	48.5	22	
SZPX1-B01-B8 SZPX1-B01-B10	28	M8X1.25 M10X1.5	3-M3X0.5	3	11.5	15	48.5	24	
SZPX2-B01-B10 SZPX2-B01-B12 SZPX3-B01-B10	45	M10X1.5 M12X1.75	4-M4X0.7	4	11.5	26.5	48.5	37	
SZPX3-B01-B10 SZPX3-B01-B12	70	M10X1.5 M12X1.75	4-M5X0.8	4	13	28	50	60	

## SZPX Female Thread without Buffering



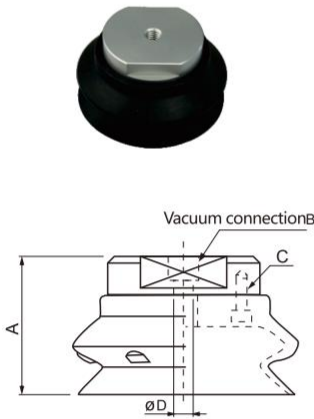
Model	A	B	C	D	Replace The Support Model
SZPT32H□-B5	19.5	M5X0.8	3-M2.5X0.45	5	SZPT0-B5
SZPT32H□-B8		M8X1.25			SZPT0-B8
SZPT32H□-B10		M10X1.5			SZPT0-B10
SZPT40H□-B8	23	B8:M8X1.25 B10:M10X1.5	3-M3X0.5	6	SZPT1-B8 SZPT1-B10
SZPT40H□-B10					
SZPT50H□-B8					
SZPT50H□-B10	26	B8:M8X1.25 B10:M10X1.5 B12:M12X1.75 B16:M16X1.5	4-M4X0.7	8	SZPT2-B8 SZPT2-B10 SZPT2-B12 SZPT2-B16
SZPT63H□-B8					
SZPT63H□-B10					
SZPT63H□-B12	28	B8:M8X1.25 B10:M10X1.5 B12:M12X1.75 B16:M16X1.5	4-M4X0.7	8	SZPT2-B8 SZPT2-B10 SZPT2-B12 SZPT2-B16
SZPT63H□-B16					
SZPT80H□-B8					
SZPT80H□-B10	34	B12:M12X1.75 B16:M16X1.5	4-M5X0.8	10	SZPT3-B12 SZPT3-B16
SZPT80H□-B12					
SZPT80H□-B16					
SZPT100H□-B12	34	B12:M12X1.75 B16:M16X1.5	4-M5X0.8	10	SZPT3-B12 SZPT3-B16
SZPT100H□-B16					
SZPT125H□-B12					
SZPT125H□-B16					

SZPT/SZPX without Buffer

# SZPT/SZPX Heavy Duty without Buffer

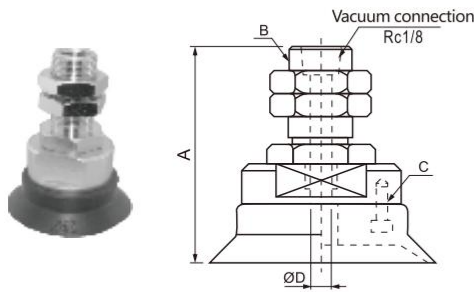


## SZPT/SZPX Heavy Duty without Buffer

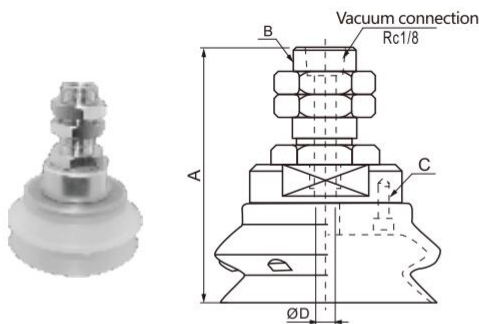


Model	A	B	C	D	Replace The Support Model
SZPT32HB□-B5	30	M5X0.8	3-M2.5X0.45	5	SZPT0-B5 SZPT0-B8 SZPT0-B10
SZPT32HB□-B8		M8X1.25			
SZPT32HB□-B10		M10X1.5			
SZPT40HB□-B8	32	B8:M8X1.25 B10:M10X1.5	3-M3X0.5	6	SZPT1-B8 SZPT1-B10
SZPT40HB□-B10					
SZPT50HB□-B8	35.5	B8:M8X1.25 B10:M10X1.5	3-M3X0.5	6	SZPT1-B8 SZPT1-B10
SZPT50HB□-B10					
SZPT63HB□-B8	43	B8:M8X1.25 B10:M10X1.5 B12:M12X1.75	4-M4X0.7	8	SZPT2-B8 SZPT2-B10 SZPT2-B12 SZPT2-B16
SZPT63HB□-B10					
SZPT63HB□-B16					
SZPT80HB□-B8	48.5	B8:M8X1.25 B10:M10X1.5 B16:M16X1.5	4-M4X0.7	8	SZPT2-B8 SZPT2-B10 SZPT2-B12 SZPT2-B16
SZPT80HB□-B10					
SZPT80HB□-B12					
SZPT80HB□-B16	60.5	B12:M12X1.75 B16:M16X1.5	4-M5X0.8	10	SZPT3-B12 SZPT3-B16
SZPT100HB□-B12					
SZPT100HB□-B16					
SZPT125HB□-B12	69	B12:M12X1.75 B16:M16X1.5	4-M5X0.8	10	SZPT3-B12 SZPT3-B16
SZPT125HB□-B16					

## SZPT Male Thread without Buffering

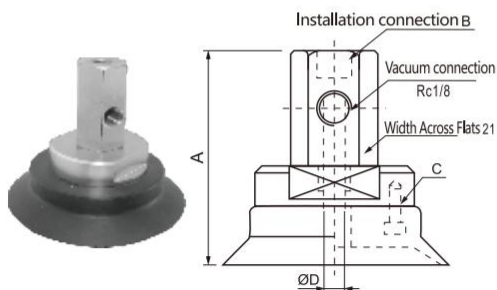


Model	A	B	C	D	Replace The Support Model
SZPT32H□-A14	49.5	M14X1.0	3-M2.5X0.45	3	SZPT0-A14
SZPT40H□-A14	53		3-M3X0.5		
SZPT50H□-A14			56	M16X0.7	4-M4X0.7
SZPT63H□-A16	58				
SZPT80H□-A16	64				



Model	A	B	C	D	Replace The Support Model
SZPT32H□-A14	60	M14X1.0	3-M2.5X0.45	3	SZPT0-A14
SZPT40H□-A14	62		3-M3X0.5		
SZPT50H□-A14	65.5		M16X1.5	4-M4X0.7	8
SZPT63H□-A16	73				
SZPT80H□-A16	78.5				
SZPT100H□-A16	90.5	99	4-M4X0.7	8	SZPT2-A16 SZPT3-A16
SZPT125H□-A16					

## SZPX Female Thread without Buffering

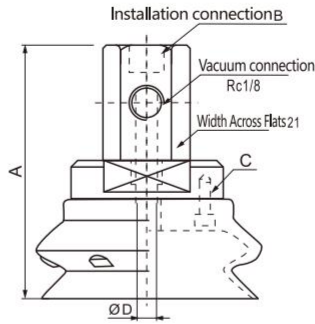


Model	A	B	C	ØD	Replace The Support Model
SZPX32H□-B01-B8	56.5	B8:M8X1.25 B10:M10X1.5	3-M2.5X0.45	3	SZPX0-B8 SZPX0-B10
SZPX32H□-B01-B10					
SZPX40H□-B01-B8	60	B8:M8X1.25 B10:M10X1.5	3-M3X0.5	3	SZPX1-B8 SZPX1-B10
SZPX40H□-B01-B10					
SZPX50H□-B01-B8	63	B8:M8X1.25 B10:M10X1.5	3-M3X0.5	3	SZPX1-B8 SZPX1-B10
SZPX50H□-B01-B10					
SZPX63H□-B01-B10	65	B10:M10X1.5 B12:M12X1.75	4-M4X0.7	4	SZPX2-B10 SZPX2-B12
SZPX63H□-B01-B12					
SZPX80H□-B01-B10	71	B10:M10X1.5 B12:M12X1.75	4-M4X0.7	4	SZPX2-B10 SZPX2-B12
SZPX80H□-B01-B12					
SZPX100H□-B01-B10	71	B10:M10X1.5 B12:M12X1.75	4-M4X0.7	4	SZPX3-B10 SZPX3-B12
SZPX100H□-B01-B12					
SZPX125H□-B01-B10	71	B10:M10X1.5 B12:M12X1.75	4-M4X0.7	4	SZPX3-B10 SZPX3-B12
SZPX125H□-B01-B12					

# SZPT/SZPX Heavy Duty without Buffer



## ○ SZPX Female Thread without Buffering



Model	A	B	C	ØD	Replace The Support Model
SZPX32HB□-B01-B8	56.5	B8:M8X1.25 B10:M10X1.5	3-M2.5X0.45	3	SZPX0-B8
SZPX32HB□-B01-B10			3-M3X0.5		SZPX0-B10
SZPX40HB□-B01-B8	3-M3X0.5				SZPX1-B8
SZPX40HB□-B01-B10			3-M3X0.5		
SZPX50HB□-B01-B8	60	B10:M10X1.5 B12:M12X1.75		4-M4X0.7	4
SZPX50HB□-B01-B10					
SZPX63HB□-B01-B10	63				
SZPX63HB□-B01-B12					
SZPX80HB□-B01-B10	65				
SZPX80HB□-B01-B12					
SZPX100HB□-B01-B10	71	B10:M10X1.5 B12:M12X1.75	4-M4X0.7	4	SZPX3-B10 SZPX3-B12
SZPX100HB□-B01-B12					
SZPX125HB□-B01-B10					
SZPX125HB□-B01-B12					