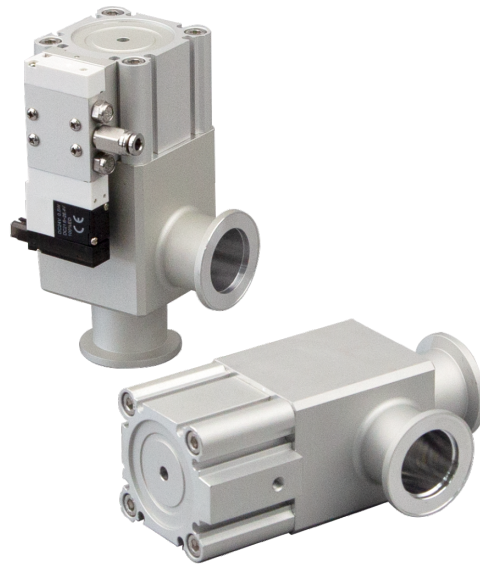


EXLA(V)/F(V)

High Vacuum Angle Valve



◎ EXLA(V) Series High Vacuum Angle Valve Normally Closed / Bellows Seal

- EXLA(V) High Vacuum Angle Valve, featuring a normally closed single-acting design, achieves constant pressure sealing, thus suitable for complex client designs without leakage.
- Highly extruded one-piece aluminum alloy valve body, providing high strength, hardness, and corrosion resistance, extending service life.
- Long-life stainless steel bellows design, isolating the O-ring inside the valve body from outgassing in a vacuum environment, meeting high vacuum requirements.
- All-imported fluorocarbon rubber sealing rings, meeting high-quality and long-life design specifications.
- Offers pilot ports in four directions.
- Entire series is copper and zinc-free, meeting the high standards of the lithium battery and semiconductor industries.

◎ EXLF(V) Series High Vacuum Angle Valve Normally Closed / O-Ring Sealed

- EXLF(V) High Vacuum Angle Valve, with a normally closed single-acting design, achieves constant pressure sealing, making it suitable for complex client designs without leakage.
- Highly extruded one-piece aluminum alloy valve body, offering high strength, hardness, and corrosion resistance, which extends the service life.
- Bellows-free design, allowing for faster opening and closing speeds, meeting the requirements for rapid actuation.
- All-imported fluorocarbon rubber sealing rings, meeting high-quality and long-life design specifications.
- Offers pilot ports in four directions.
- Entire series is copper and zinc-free, satisfying the high standards of the lithium battery and semiconductor industries.

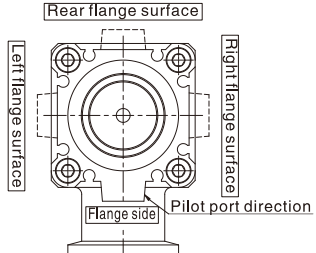
EXLA(V)/F(V) Series High Vacuum Angle Valve

How to order?

EXLA

Series Code	Flange Size	Flange Type	Indicator and Pilot Port Direction	Magnet No.																															
EXLA: Normally Closed/ Bellows Seal High Vacuum Angle Valve	16 25 40 50 63	<table border="1"> <thead> <tr> <th>Code</th> <th>Flange Type</th> <th>Applicable flange size</th> </tr> </thead> <tbody> <tr> <td>Blank</td> <td>KF(NW)</td> <td>16.25.40.50.63</td> </tr> <tr> <td>D</td> <td>K(DN)</td> <td>63</td> </tr> </tbody> </table>	Code	Flange Type	Applicable flange size	Blank	KF(NW)	16.25.40.50.63	D	K(DN)	63	<table border="1"> <thead> <tr> <th>Code</th> <th>Indicator</th> <th>Pilot port direction</th> </tr> </thead> <tbody> <tr> <td>Blank</td> <td>Without indicator</td> <td>Flange side</td> </tr> <tr> <td>A</td> <td rowspan="4">with indicator</td> <td>Flange side</td> </tr> <tr> <td>F</td> <td>Left flange surface</td> </tr> <tr> <td>G</td> <td>Rear flange surface</td> </tr> <tr> <td>J</td> <td>Right flange surface</td> </tr> <tr> <td>K</td> <td rowspan="3">Without indicator</td> <td>Left flange surface</td> </tr> <tr> <td>L</td> <td>Rear flange surface</td> </tr> <tr> <td>M</td> <td>Right flange surface</td> </tr> </tbody> </table>	Code	Indicator	Pilot port direction	Blank	Without indicator	Flange side	A	with indicator	Flange side	F	Left flange surface	G	Rear flange surface	J	Right flange surface	K	Without indicator	Left flange surface	L	Rear flange surface	M	Right flange surface	Blank: Without magnet S: With magnet
Code	Flange Type	Applicable flange size																																	
Blank	KF(NW)	16.25.40.50.63																																	
D	K(DN)	63																																	
Code	Indicator	Pilot port direction																																	
Blank	Without indicator	Flange side																																	
A	with indicator	Flange side																																	
F		Left flange surface																																	
G		Rear flange surface																																	
J		Right flange surface																																	
K	Without indicator	Left flange surface																																	
L		Rear flange surface																																	
M		Right flange surface																																	

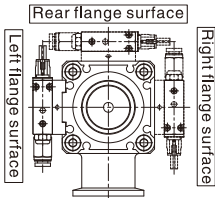
Order Example:
EXLA Series High Vacuum Angle Valve, flange size 40, with indicator, pilot port direction to the right side of the flange surface, with magnetic, its ERP code :EXLA40J-S.



EXLAV

Series Code	Flange Size	Flange Type	Indicator and Pilot Port Direction	Magnet No.	Voltage	Connection Mode	Wiring length																										
EXLAV: EXLAV Series High Vacuum Angle Valve Normally Closed, Bellows Seal, With Solenoid Valve	16 25 40 50 63	<table border="1"> <thead> <tr> <th>Code</th> <th>Flange Type</th> <th>Applicable flange size</th> </tr> </thead> <tbody> <tr> <td>Blank</td> <td>KF(NW)</td> <td>16.25.40.50.63</td> </tr> <tr> <td>D</td> <td>K(DN)</td> <td>63</td> </tr> </tbody> </table>	Code	Flange Type	Applicable flange size	Blank	KF(NW)	16.25.40.50.63	D	K(DN)	63	<table border="1"> <thead> <tr> <th>Code</th> <th>Indicator</th> <th>Solenoid valve direction</th> </tr> </thead> <tbody> <tr> <td>F</td> <td rowspan="3">With indicator</td> <td>Left flange surface</td> </tr> <tr> <td>G</td> <td>Rear flange surface</td> </tr> <tr> <td>J</td> <td>Right flange surface</td> </tr> <tr> <td>K</td> <td rowspan="3">Without indicator</td> <td>Left flange surface</td> </tr> <tr> <td>L</td> <td>Rear flange surface</td> </tr> <tr> <td>M</td> <td>Right flange surface</td> </tr> </tbody> </table>	Code	Indicator	Solenoid valve direction	F	With indicator	Left flange surface	G	Rear flange surface	J	Right flange surface	K	Without indicator	Left flange surface	L	Rear flange surface	M	Right flange surface	Blank: Without magnet S: With magnet	E4: DC24V	M: Plug-in Type	1: 0.3M wiring 2: 0.6M wiring
Code	Flange Type	Applicable flange size																															
Blank	KF(NW)	16.25.40.50.63																															
D	K(DN)	63																															
Code	Indicator	Solenoid valve direction																															
F	With indicator	Left flange surface																															
G		Rear flange surface																															
J		Right flange surface																															
K	Without indicator	Left flange surface																															
L		Rear flange surface																															
M		Right flange surface																															

Order Example: EXLAV Series High Vacuum Angle Valve with solenoid valve, flange size 40, KF Flange, with indicator, pilot port direction to the right side of the flange surface, with magnet, DC24V, M type plug connector, Lead wire length 0.6M, its ERP Code: EXLAV40J-S-E4-M2.



Specifications

Model	EXLA(V)16	EXLA(V)25	EXLA(V)40	EXLA(V)50	EXLA(V)63	
Valve Type	Normally closed (Pressurize to open, Spring seal)					
Working Fluid	Inert gas under vacuum					
Working Pressure Pa(abs) ^①	1x10 ⁻⁶ ~to atmospheric pressure					
Working Temperature °C	EXLA	5 to 60 (High-temperature type: 5 to 150)				
	EXLAV	5~50				
Conductance(L/s) ^②	5	14	41	74	160	
Leakage (Pa · m ³ /s)	Internal	For standard seal material (FKM): 1.3 x 10 ⁻¹⁰ at normal temperature, excluding gas permeation.				
	External	For standard seal material (FKM): 1.3 x 10 ⁻¹¹ at normal temperature, excluding gas permeation				
Flange Type	KF(NW)			KF(NW)、K(DN)		
Principal Materials	Body: Aluminum alloy, Bellows:SUS316L, Chief part: Stainless steel, FKM (Standard seal material)					
Surface Treatment	External: Hard anodized			Internal: Raw material		
Pilot Pressure [MPa(G)]	0.4~0.7					
Pilot Port Size	EXLA	M5X0.8		G1/8		
	EXLAV	M5X0.8				
Weight (kg)	EXLA	0.332	0.59	1.24	1.86	3.56
	EXLAV	0.418	0.67	1.31	1.93	3.63

①abs: Absolute Pressure ② The conductance value is the theoretical calculation value of the molecular basin, not the measured value
③G: Relative Pressure.

How to order?

EXLF

Series Code	Flange Size	Flange Type	Indicator and Pilot Port Direction	Magnet No.																															
EXLF: Normally Closed / O-Ring Sealed High Vacuum Angle Valve	16 25 40 50 63	<table border="1"> <thead> <tr> <th>Code</th> <th>Flange Type</th> <th>Applicable flange size</th> </tr> </thead> <tbody> <tr> <td>Blank</td> <td>KF(NW)</td> <td>16.25.40.50.63</td> </tr> <tr> <td>D</td> <td>K(DN)</td> <td>63</td> </tr> </tbody> </table>	Code	Flange Type	Applicable flange size	Blank	KF(NW)	16.25.40.50.63	D	K(DN)	63	<table border="1"> <thead> <tr> <th>Code</th> <th>Indicator</th> <th>Pilot port direction</th> </tr> </thead> <tbody> <tr> <td>Blank</td> <td>Without indicator</td> <td>Flange side</td> </tr> <tr> <td>A</td> <td rowspan="4">with indicator</td> <td>Flange side</td> </tr> <tr> <td>F</td> <td>Left flange surface</td> </tr> <tr> <td>G</td> <td>Rear flange surface</td> </tr> <tr> <td>J</td> <td>Right flange surface</td> </tr> <tr> <td>K</td> <td rowspan="3">Without indicator</td> <td>Left flange surface</td> </tr> <tr> <td>L</td> <td>Rear flange surface</td> </tr> <tr> <td>M</td> <td>Right flange surface</td> </tr> </tbody> </table>	Code	Indicator	Pilot port direction	Blank	Without indicator	Flange side	A	with indicator	Flange side	F	Left flange surface	G	Rear flange surface	J	Right flange surface	K	Without indicator	Left flange surface	L	Rear flange surface	M	Right flange surface	Blank: Without magnet S: With magnet
Code	Flange Type	Applicable flange size																																	
Blank	KF(NW)	16.25.40.50.63																																	
D	K(DN)	63																																	
Code	Indicator	Pilot port direction																																	
Blank	Without indicator	Flange side																																	
A	with indicator	Flange side																																	
F		Left flange surface																																	
G		Rear flange surface																																	
J		Right flange surface																																	
K	Without indicator	Left flange surface																																	
L		Rear flange surface																																	
M		Right flange surface																																	

Order Example:

EXLF Series High Vacuum Angle Valve, flange size 40, with indicator, pilot port direction to the right side of the flange surface, with magnetic, its ERP code :EXLF40J-S.

EXLFV

Series Code	Flange Size	Flange Type	Indicator and Pilot Port Direction	Magnet No.	Voltage	Connection Mode	Wiring length																										
EXLFV: EXLFV Series High Vacuum Angle Valve Normally Closed, O-Ring Sealed, With Solenoid Valve	16 25 40 50 63	<table border="1"> <thead> <tr> <th>Code</th> <th>Flange Type</th> <th>Applicable flange size</th> </tr> </thead> <tbody> <tr> <td>Blank</td> <td>KF(NW)</td> <td>16.25.40.50.63</td> </tr> <tr> <td>D</td> <td>K(DN)</td> <td>63</td> </tr> </tbody> </table>	Code	Flange Type	Applicable flange size	Blank	KF(NW)	16.25.40.50.63	D	K(DN)	63	<table border="1"> <thead> <tr> <th>Code</th> <th>Indicator</th> <th>Solenoid valve direction</th> </tr> </thead> <tbody> <tr> <td>F</td> <td rowspan="3">With indicator</td> <td>Left flange surface</td> </tr> <tr> <td>G</td> <td>Rear flange surface</td> </tr> <tr> <td>J</td> <td>Right flange surface</td> </tr> <tr> <td>K</td> <td rowspan="3">Without indicator</td> <td>Left flange surface</td> </tr> <tr> <td>L</td> <td>Rear flange surface</td> </tr> <tr> <td>M</td> <td>Right flange surface</td> </tr> </tbody> </table>	Code	Indicator	Solenoid valve direction	F	With indicator	Left flange surface	G	Rear flange surface	J	Right flange surface	K	Without indicator	Left flange surface	L	Rear flange surface	M	Right flange surface	Blank: Without magnet S: With magnet	E4: DC24V	M: Plug-in Type	1: 0.3M wiring 2: 0.6M wiring
Code	Flange Type	Applicable flange size																															
Blank	KF(NW)	16.25.40.50.63																															
D	K(DN)	63																															
Code	Indicator	Solenoid valve direction																															
F	With indicator	Left flange surface																															
G		Rear flange surface																															
J		Right flange surface																															
K	Without indicator	Left flange surface																															
L		Rear flange surface																															
M		Right flange surface																															

Order Example: EXLFV Series High Vacuum Angle Valve with solenoid valve, flange size 40, KF Flange, with indicator, pilot port direction to the right side of the flange surface, with magnet, DC24V, M type plug connector, Lead wire length 0.6M, its ERP Code: EXLFV40J-S-E4-M2.

Specifications

Model	EXLF(V)16	EXLF(V)25	EXLF(V)40	EXLF(V)50	EXLF(V)63	
Valve Type	Normally closed (Pressurize to open, Spring seal)					
Working Fluid	Inert gas under vacuum					
Working Pressure Pa(abs) ^①	1x10 ⁻⁶ ~to atmospheric pressure					
Working Temperature °C	EXLF	5 to 60 (High-temperature type: 5 to 150)				
	EXLFV	5~50				
Conductance(L/s) ^②	5	14	41	74	160	
Leakage (Pa · m ³ / s)	Internal	For standard seal material (FKM): 1.3 x 10 ⁻¹⁰ at normal temperature, excluding gas permeation.				
	External	For standard seal material (FKM): 1.3 x 10 ⁻¹¹ at normal temperature, excluding gas permeation				
Flange Type	KF(NW)				KF(NW)、K(DN)	
Principal Materials	Body: Aluminum alloy, Bellows:SUS316L, Chief part: Stainless steel, FKM (Standard seal material)					
Surface Treatment	External: Hard anodized Internal: Raw material					
Pilot Pressure [MPa(G)]	0.4~0.7					
Pilot Port Size	EXLF	M5X0.8		G1/8		
	EXLFV	M5X0.8				
Weight (kg)	EXLF	0.36	0.65	1.34	2	3.89
	EXLFV	0.44	0.73	1.41	2.08	3.96

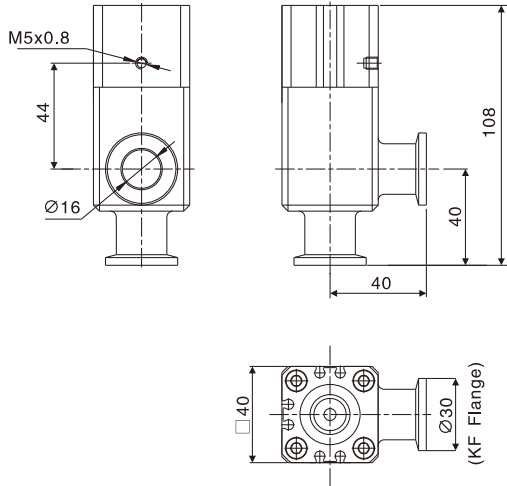
①abs: Absolute Pressure ② The conductance value is the theoretical calculation value of the molecular basin, not the measured value

③G: Relative Pressure.

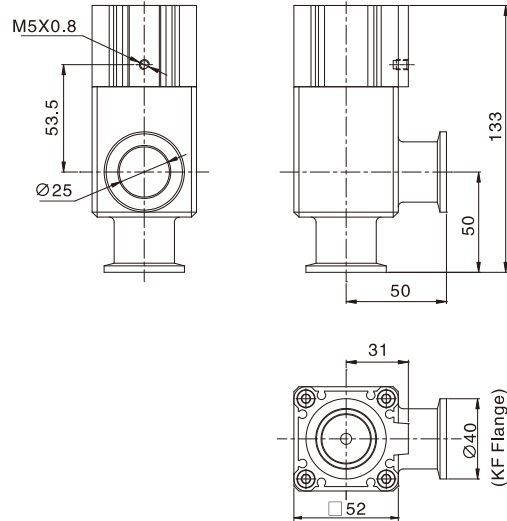
EXLA(V)/F(V) Series High Vacuum Angle Valve

Dimensions

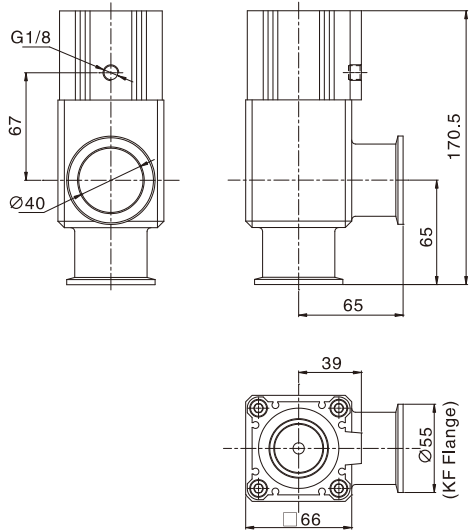
EXLA/F16A



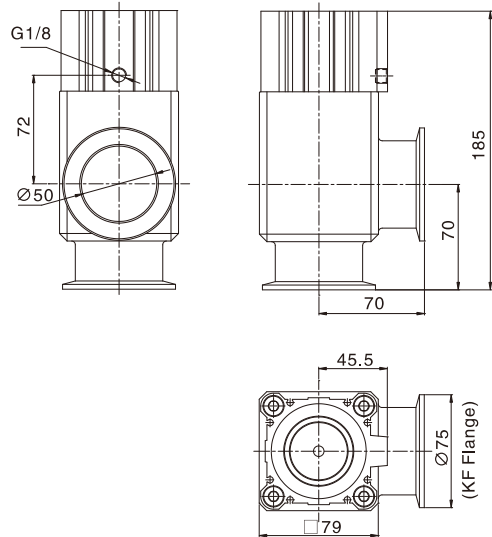
EXLA/F25A



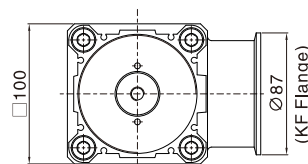
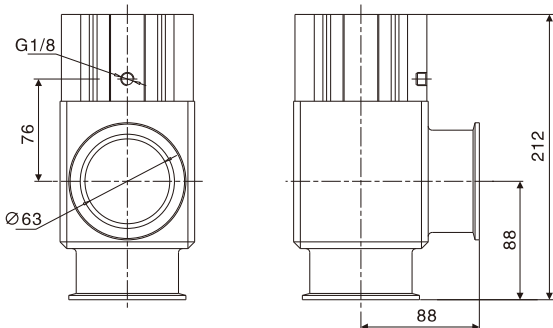
EXLA/F40A



EXLA/F50A

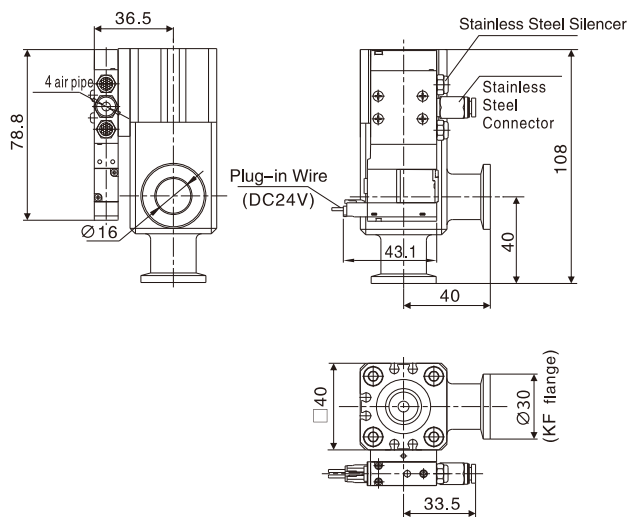


EXLA/F63A

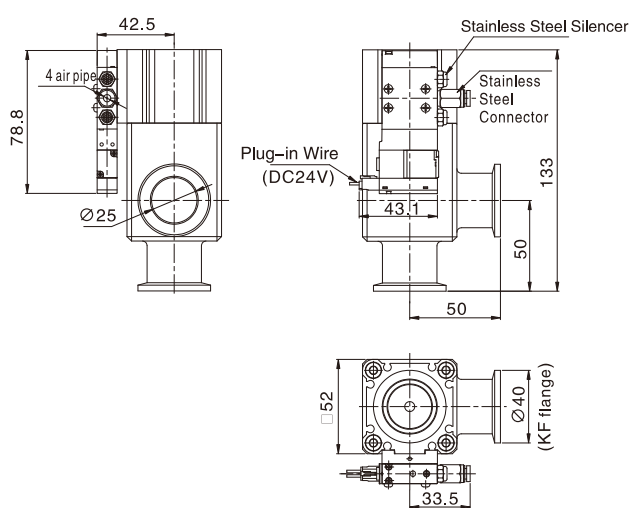


Dimensions

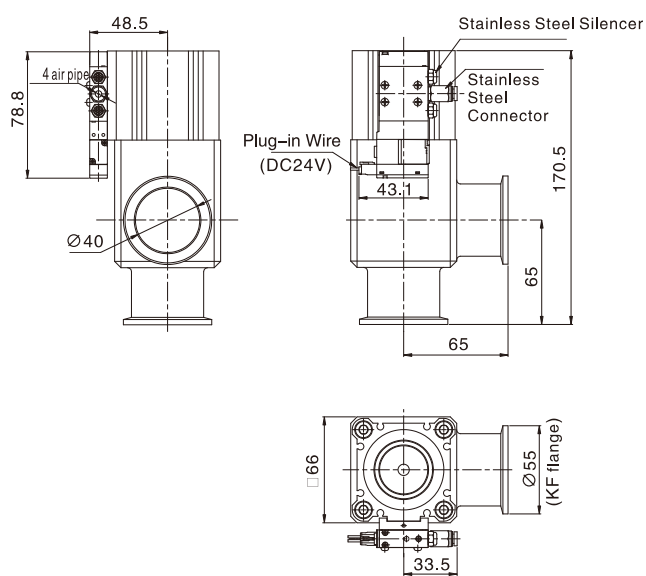
EXLAV/FV16F



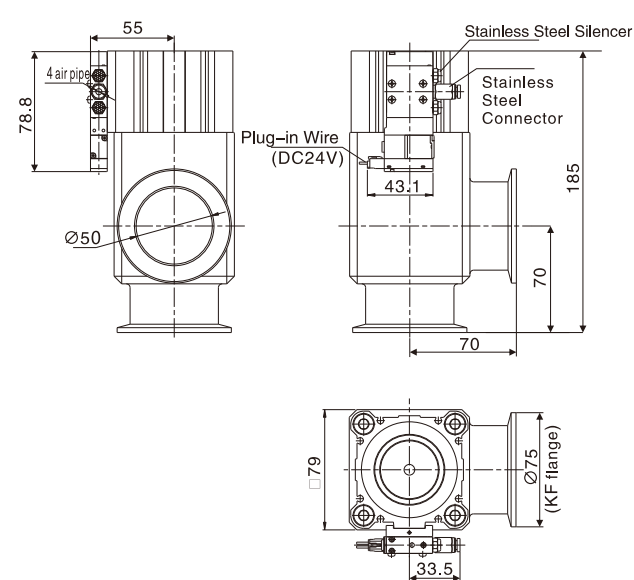
EXLAV/FV25F



EXLAV/FV40F



EXLAV/FV50F



EXLAV/FV63F

