

AER/BER Regulator



How to Order?

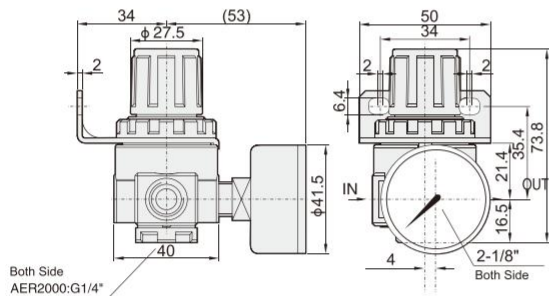
Series No.	Type Code	Body Size	Pressure Gauge Code	Bracket Code	Scale Unit	Thread Type
AE: Small body size without bowl guard	R: Regulator	2000: 1/4" 2000: 1/4" 3000: 3/8" 4000: 1/2"	Blank: With pressure gauge N: No pressure gauge	Blank: With bracket J: No bracket	4: Mpa/Psi(Default) 5: Bar/Psi	Blank: G P: PT T: NPT
BE: Larger body size with bowl guard						

Order Example:

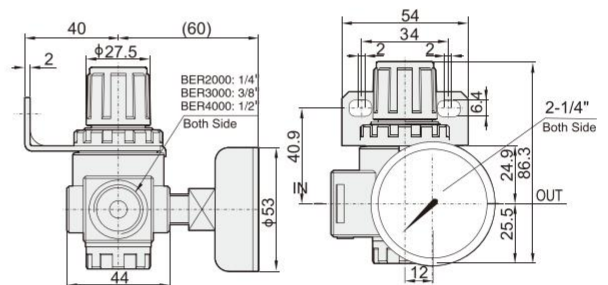
AE series Regulator, 1/4" body size, Mpa/Psi pressure scale unit, PT thread, ERP code is: AEC2000-4-P

Main Dimension

AER2000



BER2000-4000



Specifications

Model	AER2000	BER2000	BER3000	BER4000
Working medium	Air			
Port size	G1/4	G1/4	G3/8	G1/2
Adjusting pressure range (MPa)	0.05-0.85			
Max. adjusting pressure (MPa)	1.0			
Guaranteed pressure (MPa)	1.5			
Working temperature(°C)	5-60			
Weight (g)	200	230		