

EUK Free Mount Cylinder



Specifications

| Bore(mm) | 10 | 16 | 20 | 25 | 32 |
|--------------------------|-----------------------------|----|-----------------------|----|--------|
| Acting type | Double acting | | | | |
| Working medium | Clean air(40 μm filtration) | | | | |
| Working pressure(MPa) | 0.1~1.0(Double acting) | | | | |
| Guaranteed pressure(Mpa) | 1.5 | | | | |
| Working temperature(°C) | -20~70(No freezing) | | | | |
| Speed range(mm/s) | Double acting: 30~500 | | Single acting: 50~500 | | |
| Stroke tolerance | +1.0 0 | | | | |
| Cushion type | Rubber cushion | | | | |
| Port size | M5 x 0.8 | | | | G1/8 ① |

① PT、NPT port size is optional.

Product Characteristics

- The body of a variety of fixed forms, small body, light weight, easy to install and use, without accessories;
- Various specifications and models are available for customers to choose, and the whole series is divided into magnetic induction and non-magnetic induction, which is convenient for control;
- High precision of piston rod guiding, no need to add additional lubricant;
- Equipped with piston rod fixing block to ensure that the piston rod does not rotate;
- The inductive switch is buried type, integrated design and simple positioning.

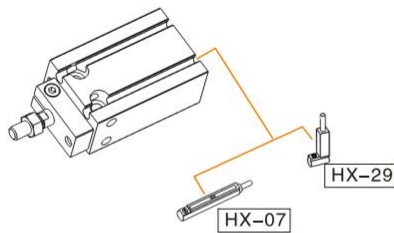
How to Order?

| Series No | Type No | Bore X Stroke | Adjustable Stroke | Magnet No | Thread Type |
|-----------|---|-----------------------|----------------------------|----------------|--|
| EUK | Blank: Basic type D: Double shaft type J: Double shaft and adjustable stroke type | 10 16 ... 32 | 5 10 15 ... 80 | 10 20 30 | Blank: No magnet S: With magnet Blank: G |

Order Example:

EUK Series basic type cylinder, 32mm bore, 30mm stroke, with magnet, G thread,
ERP code is: EUK 32X30-S

Optional Accessories



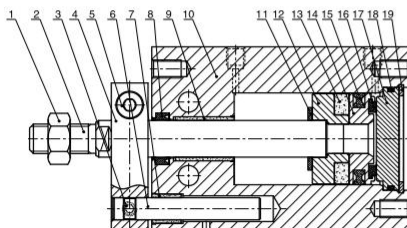
Note: Short stroke please use HX-29 series due to limited space.

Stroke

| Bore (mm) | Standard Stroke (mm) | | | | | | | | | | Max. Stroke (mm) | |
|-----------|----------------------|----|----|----|----|----|----|----|----|----|------------------|----|
| 10 | 5 | 10 | 15 | 20 | 25 | 30 | 35 | 40 | | | | 40 |
| 16 | 5 | 10 | 15 | 20 | 25 | 30 | 40 | 50 | 60 | | | 60 |
| 20 | 5 | 10 | 15 | 20 | 25 | 30 | 40 | 50 | 60 | 70 | 80 | 80 |
| 25 | 5 | 10 | 15 | 20 | 25 | 30 | 40 | 50 | 60 | 70 | 80 | 80 |
| 32 | 5 | 10 | 15 | 20 | 25 | 30 | 40 | 50 | 60 | 70 | 80 | 80 |

- Note: 1. The dimensions of non-std stroke cylinder has the same dimensions as the next longer stroke std. stroke cylinder.
e.g. 23mm stroke cylinder has the same dimensions of 25 std. stroke cylinder
2. When ordering the stroke is greater than the Max. stroke, please contact the company.

Internal Structure

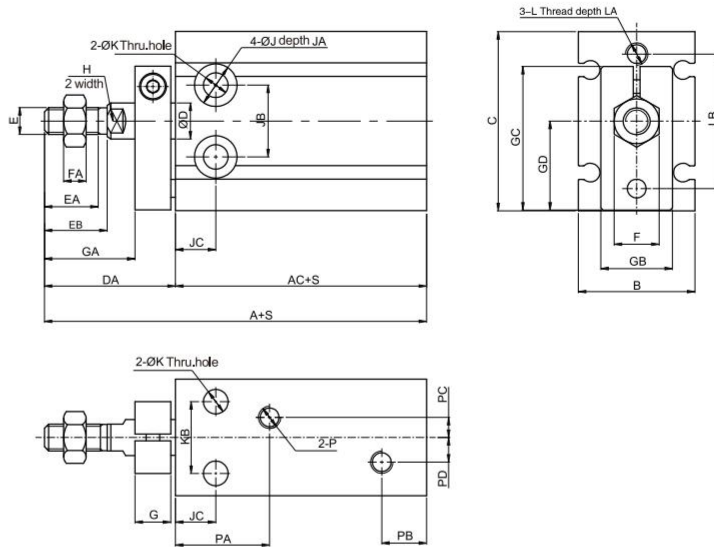


| No. | Part Name | Material | No. | Part Name | Material |
|-----|--------------------------|-------------------------|-----|---------------|----------------|
| 1 | Nut | Carbon steel | 11 | Bumper | TPU/NBR |
| 2 | Piston rod | Stainless steel | 12 | Magnet holder | Aluminum alloy |
| 3 | Socket head screw | Carbon steel | 13 | Magnet | NdFeB |
| 4 | No-rotating plate | Aluminum alloy | 14 | Piston | Aluminum alloy |
| 5 | Hexagon socket cap screw | Carbon steel | 15 | Piston seal | NBR |
| 6 | Fixed rod | Stainless steel | 16 | Bumper | TPU |
| 7 | Self lubricating bearing | Compound material/brass | 17 | Rear cover | Aluminum alloy |
| 8 | Piston rod seal | TPU/NBR | 18 | O-ring | NBR |
| 9 | Bearing | Compound material | 19 | C-clip | Spring steel |
| 10 | Barrel | Aluminum alloy | | | |

EUK Series Free Mount Cylinder

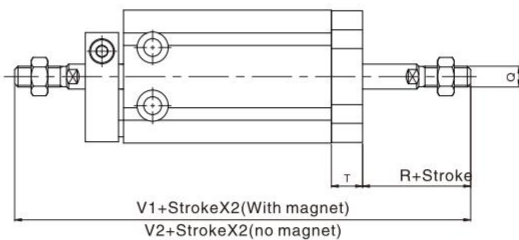


Main Dimension

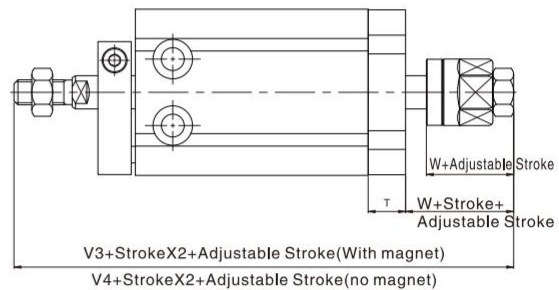


| Bore/Sign | A(No magnet) | A(With magnet) | AC(No magnet) | AC(With magnet) | B | C | D | DA | E | EA | EB | F | | | | | | | | | |
|-----------|--------------|----------------|---------------|-----------------|------|------|----|-----|----------|------|------|-----|----|--------|----|----|--------|------|------|-----|-----|
| 10 | 57 | 57 | 36 | 36 | 15 | 24 | 4 | 21 | M4X0.7 | 10 | 11 | 7 | | | | | | | | | |
| 16 | 56 | 66 | 30 | 40 | 20 | 32 | 6 | 26 | M5X0.8 | 11 | 12.5 | 8 | | | | | | | | | |
| 20 | 65 | 75 | 36 | 46 | 26 | 40 | 8 | 29 | M6X1.0 | 12 | 14 | 10 | | | | | | | | | |
| 25 | 73 | 83 | 40 | 50 | 32 | 50 | 10 | 33 | M8X1.25 | 15.5 | 18 | 12 | | | | | | | | | |
| 32 | 84 | 94 | 42 | 52 | 40 | 62 | 12 | 42 | M10X1.25 | 19.5 | 22 | 17 | | | | | | | | | |
| Bore/Sign | FA | G | GA | GB | GC | GD | H | J | JA | JB | JC | K | KB | L | LA | LB | P | PA | PB | PC | PD |
| 10 | 3 | 8 | 12 | 13 | 20.4 | 11.8 | - | 5.8 | 4.8 | 11 | 7 | 3.2 | 9 | M3X0.5 | 5 | 18 | M5X0.8 | 15.5 | 10 | - | - |
| 16 | 4 | 8 | 17 | 13 | 26.3 | 15.7 | 5 | 7.5 | 6.5 | 14 | 7 | 4.3 | 12 | M4X0.7 | 6 | 25 | M5X0.8 | 15.5 | 11.5 | 2 | 2 |
| 20 | 5 | 8 | 20 | 16 | 32 | 19.8 | 6 | 9.5 | 8 | 16 | 9 | 5.5 | 16 | M5X0.8 | 8 | 30 | M5X0.8 | 21 | 10 | 4.5 | 5.5 |
| 25 | 6 | 10 | 22 | 19 | 40 | 24.8 | 8 | 9.5 | 9 | 20 | 10 | 5.5 | 20 | M5X0.8 | 8 | 38 | M5X0.8 | 23 | 10 | 4.5 | 6 |
| 32 | 6 | 12 | 29 | 24 | 49 | 30.8 | 10 | 11 | 11.5 | 24 | 11 | 6.6 | 24 | M6X1.0 | 9 | 48 | 1/8" | 23 | 12.5 | 4.5 | 9 |

EUKD



EUKJ



| Bore/Sign | V1 | V2 | V3 | V4 | Q | R | T | W |
|-----------|------|------|------|------|----------|----|-----|------|
| 10 | 79 | 79 | 78.5 | 78.5 | M4X0.7 | 16 | 6 | 15.5 |
| 16 | 89.5 | 79.5 | 90.5 | 80.5 | M5X0.8 | 16 | 7.5 | 17 |
| 20 | 103 | 93 | 105 | 95 | M6X1.0 | 19 | 9 | 21 |
| 25 | 115 | 105 | 117 | 107 | M8X1.25 | 23 | 9 | 25 |
| 32 | 131 | 121 | 131 | 121 | M10X1.25 | 27 | 10 | 27 |

Note:

- Dimensions not noted are the same as the standard.
- Two nuts are assembled on each piston rod of 10 bore (except the piston rod fitted with adjusting nut), and one nut is assembled on each piston rod of the remaining bore.