

EXLC(V)/G(V) Series High Vacuum Angle Valve

EXLC(V)/G(V)

High Vacuum Angle Valve



◎ EXLC(V) Series High Vacuum Angle Valve Normally Closed / Bellows Seal

- EXLC(V) High Vacuum Angle Valve, featuring a double-acting design, achieves constant pressure sealing, thus suitable for complex client designs without leakage.
- Highly extruded one-piece aluminum alloy valve body, providing high strength, hardness, and corrosion resistance, extending service life.
- Long-life stainless steel bellows design, isolating the O-ring inside the valve body from outgassing in a vacuum environment, meeting high vacuum requirements.
- All-imported fluorocarbon rubber sealing rings, meeting high-quality and long-life design specifications.
- Offers pilot ports in four directions.
- Entire series is copper and zinc-free, meeting the high standards of the lithium battery and semiconductor industries.

◎ EXLG(V) Series High Vacuum Angle Valve Normally Closed / O-Ring Sealed

- EXLG(V) High Vacuum Angle Valve, featuring a double-acting design, achieves constant pressure sealing, making it suitable for complex client designs without leakage.
- Highly extruded one-piece aluminum alloy valve body, offering high strength, hardness, and corrosion resistance, which extends the service life.
- Bellows-free design, allowing for faster opening and closing speeds, meeting the requirements for rapid actuation.
- All-imported fluorocarbon rubber sealing rings, meeting high-quality and long-life design specifications.
- Offers pilot ports in four directions.
- Entire series is copper and zinc-free, satisfying the high standards of the lithium battery and semiconductor industries.

EXLC(V)/G(V) Series High Vacuum Angle Valve



How to order?

EXLC

Series Code	Flange Size	Flange Type	Indicator and Pilot Port Direction	Magnet No.																			
EXLC: Double Acting/ Bellows Seal High Vacuum Angle Valve	16 25 40 50 63	<table border="1"> <thead> <tr> <th>Code</th> <th>Flange Type</th> <th>Applicable flange size</th> </tr> </thead> <tbody> <tr> <td>Blank</td> <td>KF(NW)</td> <td>16.25.40.50.63</td> </tr> <tr> <td>D</td> <td>K(DN)</td> <td>63</td> </tr> </tbody> </table>	Code	Flange Type	Applicable flange size	Blank	KF(NW)	16.25.40.50.63	D	K(DN)	63	<table border="1"> <thead> <tr> <th>Code</th> <th>Pilot port direction</th> </tr> </thead> <tbody> <tr> <td>blank</td> <td>Flange side</td> </tr> <tr> <td>K</td> <td>Left flange surface</td> </tr> <tr> <td>L</td> <td>Rear flange surface</td> </tr> <tr> <td>M</td> <td>Right flange surface</td> </tr> </tbody> </table>	Code	Pilot port direction	blank	Flange side	K	Left flange surface	L	Rear flange surface	M	Right flange surface	Blank: Without magnet S: With magnet
Code	Flange Type	Applicable flange size																					
Blank	KF(NW)	16.25.40.50.63																					
D	K(DN)	63																					
Code	Pilot port direction																						
blank	Flange side																						
K	Left flange surface																						
L	Rear flange surface																						
M	Right flange surface																						

Order Example:

EXLC Series High Vacuum Angle Valve, flange size 50, with indicator, pilot port direction to the left side of the flange surface, with magnetic, its ERP code :EXLC50K-S.

EXLCV

Series Code	Flange Size	Flange Type	Indicator and Pilot Port Direction	Magnet No.	Voltage	Connection Mode	Wiring length																	
EXLCV: EXLCV Series High Vacuum Angle Valve Double Acting, Bellows Seal, With Solenoid Valve	16 25 40 50 63	<table border="1"> <thead> <tr> <th>Code</th> <th>Flange Type</th> <th>Applicable flange size</th> </tr> </thead> <tbody> <tr> <td>Blank</td> <td>KF(NW)</td> <td>16.25.40.50.63</td> </tr> <tr> <td>D</td> <td>K(DN)</td> <td>63</td> </tr> </tbody> </table>	Code	Flange Type	Applicable flange size	Blank	KF(NW)	16.25.40.50.63	D	K(DN)	63	<table border="1"> <thead> <tr> <th>Code</th> <th>Pilot port direction</th> </tr> </thead> <tbody> <tr> <td>K</td> <td>Left flange surface</td> </tr> <tr> <td>L</td> <td>Rear flange surface</td> </tr> <tr> <td>M</td> <td>Right flange surface</td> </tr> </tbody> </table>	Code	Pilot port direction	K	Left flange surface	L	Rear flange surface	M	Right flange surface	Blank: Without magnet S: With magnet	E4: DC24V	M: Plug-in Type	1: 0.3M wiring 2: 0.6M wiring
Code	Flange Type	Applicable flange size																						
Blank	KF(NW)	16.25.40.50.63																						
D	K(DN)	63																						
Code	Pilot port direction																							
K	Left flange surface																							
L	Rear flange surface																							
M	Right flange surface																							

Order Example: EXLCV Series High Vacuum Angle Valve with solenoid valve, flange size 50, KF Flange, pilot port direction to the left side of the flange surface, with magnet, DC24V, M type plug connector, Lead wire length 0.3M, its ERP Code: EXLCV50K-S-E4-M1.

Specifications

Model	EXLC(V)16	EXLC(V)25	EXLC(V)40	EXLC(V)50	EXLC(V)63	
Valve Type	Double action (pressure to open and close)					
Working Fluid	Inert gas under vacuum					
Working Pressure Pa(abs)①	1x10 ⁻⁶ ~to atmospheric pressure					
Working Temperature °C	EXLC	5~60 (High-temperature type: 5~150)				
	EXLCV	5~50				
Conductance(L/s) ②	5	14	41	74	160	
Leakage (Pa · m ³ / s)	Internal	For standard seal material (FKM): 1.3 x 10 ⁻¹⁰ at normal temperature, excluding gas permeation.				
	External	For standard seal material (FKM): 1.3 x 10 ⁻¹¹ at normal temperature, excluding gas permeation				
Flange Type	KF(NW)				KF(NW)、K(DN)	
Principal Materials	Body: Aluminum alloy, Bellows:SUS316L, Chief part: Stainless steel, FKM (Standard seal material)					
Surface Treatment	External: Hard anodized Internal: Raw material					
Pilot Pressure [MPa(G)]	0.3~0.6			0.4~0.6		
Pilot Port Size	EXLC	M5X0.8		G1/8		
	EXLCV	M5X0.8				
Weight (kg)	EXLC	0.32	0.56	1.16	1.76	3.33
	EXLCV	0.40	0.64	1.23	1.83	3.40

①abs: Absolute Pressure ② The conductance value is the theoretical calculation value of the molecular basin, not the measured value
③G: Relative Pressure.

EXLC(V)/G(V) Series High Vacuum Angle Valve

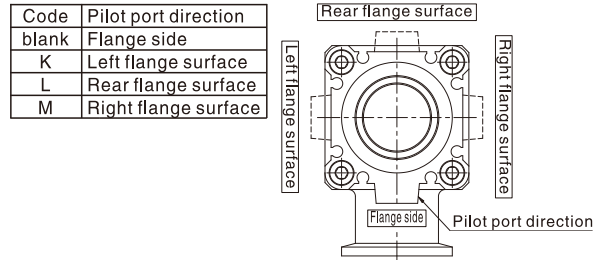
How to order?

EXLG

Series Code	Flange Size	Flange Type	Indicator and Pilot Port Direction	Magnet No.									
EXLG: Double Acting / O-Ring Sealed High Vacuum Angle Valve	16 25 40 50 63	<table border="1"> <thead> <tr> <th>Code</th> <th>Flange Type</th> <th>Applicable flange size</th> </tr> </thead> <tbody> <tr> <td>Blank</td> <td>KF(NW)</td> <td>16.25.40.50.63</td> </tr> <tr> <td>D</td> <td>K(DN)</td> <td>63</td> </tr> </tbody> </table>	Code	Flange Type	Applicable flange size	Blank	KF(NW)	16.25.40.50.63	D	K(DN)	63		Blank: Without magnet S: With magnet
Code	Flange Type	Applicable flange size											
Blank	KF(NW)	16.25.40.50.63											
D	K(DN)	63											

Order Example:

EXLG Series High Vacuum Angle Valve, flange size 50, with indicator, pilot port direction to the left side of the flange surface, with magnetic, its ERP code :EXLG50K-S.



EXLGV

Series Code	Flange Size	Flange Type	Indicator and Pilot Port Direction	Magnet No.	Voltage	Connection Mode	Wiring length																	
EXLGV: EXLGV Series High Vacuum Angle Valve Double Acting, O-Ring Sealed, With Solenoid Valve	16 25 40 50 63	<table border="1"> <thead> <tr> <th>Code</th> <th>Flange Type</th> <th>Applicable flange size</th> </tr> </thead> <tbody> <tr> <td>Blank</td> <td>KF(NW)</td> <td>16.25.40.50.63</td> </tr> <tr> <td>D</td> <td>K(DN)</td> <td>63</td> </tr> </tbody> </table>	Code	Flange Type	Applicable flange size	Blank	KF(NW)	16.25.40.50.63	D	K(DN)	63	<table border="1"> <thead> <tr> <th>Code</th> <th>Pilot port direction</th> </tr> </thead> <tbody> <tr> <td>K</td> <td>Left flange surface</td> </tr> <tr> <td>L</td> <td>Rear flange surface</td> </tr> <tr> <td>M</td> <td>Right flange surface</td> </tr> </tbody> </table>	Code	Pilot port direction	K	Left flange surface	L	Rear flange surface	M	Right flange surface	Blank: Without magnet S: With magnet	E4: DC24V	M: Plug-in Type	1: 0.3M wiring 2: 0.6M wiring
Code	Flange Type	Applicable flange size																						
Blank	KF(NW)	16.25.40.50.63																						
D	K(DN)	63																						
Code	Pilot port direction																							
K	Left flange surface																							
L	Rear flange surface																							
M	Right flange surface																							

Order Example: EXLGV Series High Vacuum Angle Valve with solenoid valve, flange size 50, KF Flange, pilot port direction to the left side of the flange surface, with magnet, DC24V, M type plug connector, Lead wire length 0.3M, its ERP Code: EXLGV50K-S-E4-M1.

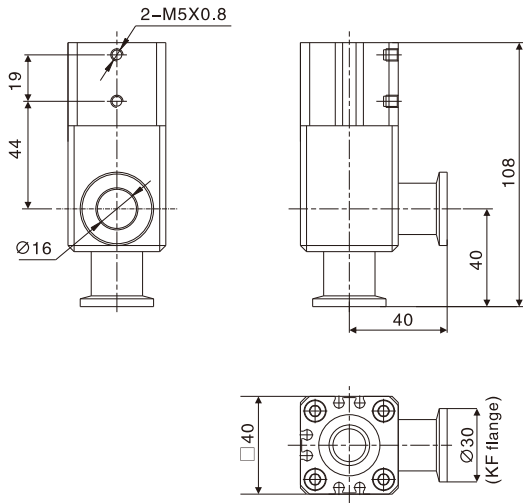
Specifications

Model	EXLG(V)16	EXLG(V)25	EXLG(V)40	EXLG(V)50	EXLG(V)63	
Valve Type	Double action (pressure to open and close)					
Working Fluid	Inert gas under vacuum					
Working Pressure Pa(abs) ^①	1x10 ⁻⁶ ~to atmospheric pressure					
Working Temperature °C	EXLG	5 to 60 (High-temperature type: 5 to 150)				
	EXLGV	5~50				
Conductance(L/s) ^②	5	14	41	74	160	
Leakage (Pa · m ³ /s)	Internal	For standard seal material (FKM): 1.3 x 10 ⁻¹⁰ at normal temperature, excluding gas permeation.				
	External	For standard seal material (FKM): 1.3 x 10 ⁻¹¹ at normal temperature, excluding gas permeation				
Flange Type	KF(NW)			KF(NW)、K(DN)		
Principal Materials	Body: Aluminum alloy, Bellows: SUS316L, Chief part: Stainless steel, FKM (Standard seal material)					
Surface Treatment	External: Hard anodized Internal: Raw material					
Pilot Pressure [MPa(G)]	0.3~0.6		0.4~0.6			
Pilot Port Size	EXLG	M5X0.8		G1/8		
	EXLGV	M5X0.8				
Weight (kg)	EXLG	0.35	0.59	1.19	1.81	3.64
	EXLGV	0.43	0.67	1.27	1.89	3.71

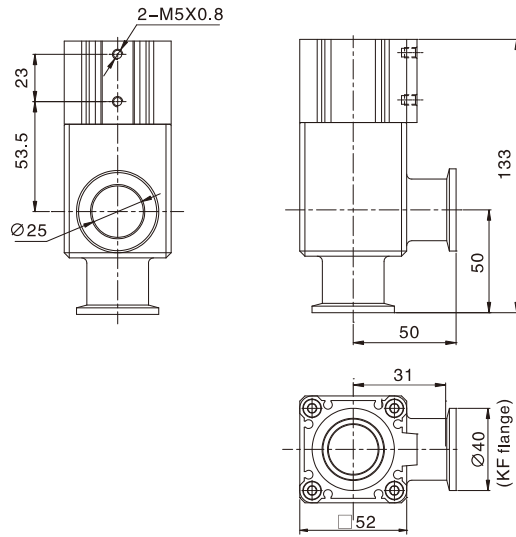
①abs: Absolute Pressure ② The conductance value is the theoretical calculation value of the molecular basin, not the measured value
③G: Relative Pressure.

Dimensions

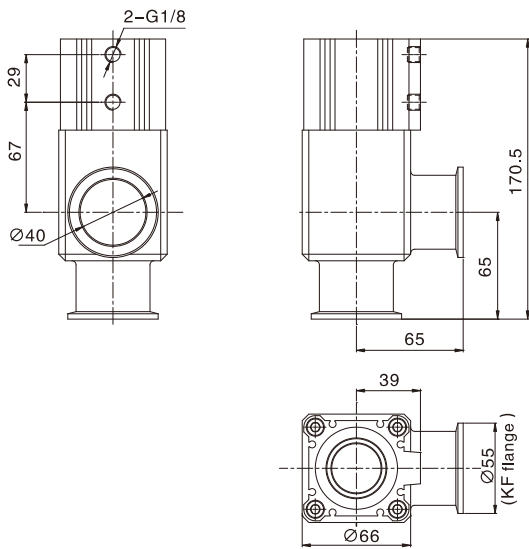
EXLC/G16



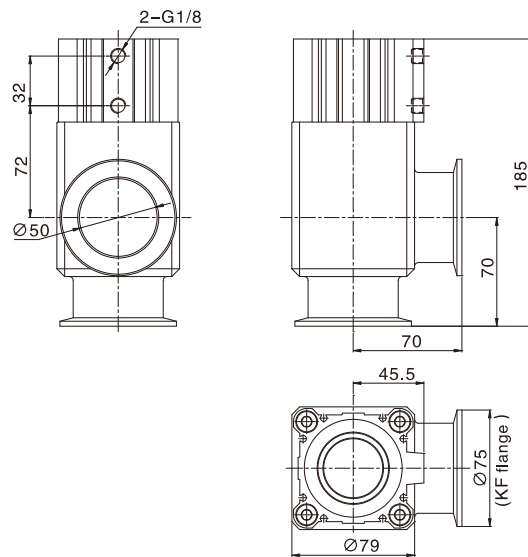
EXLC/G25



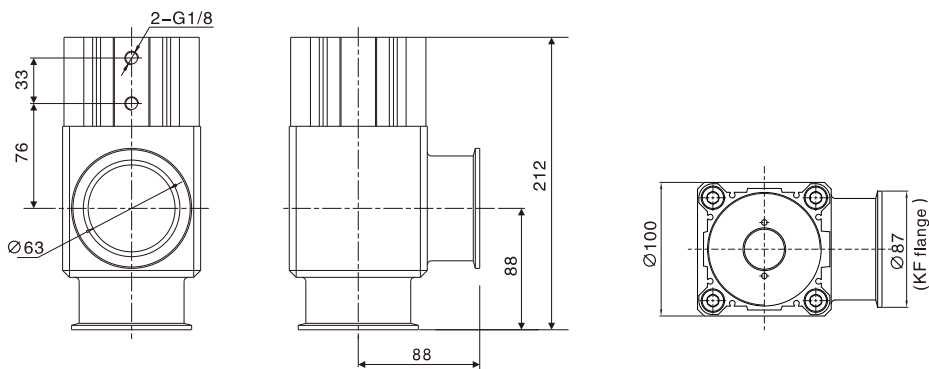
EXLC/G40



EXLC/G50



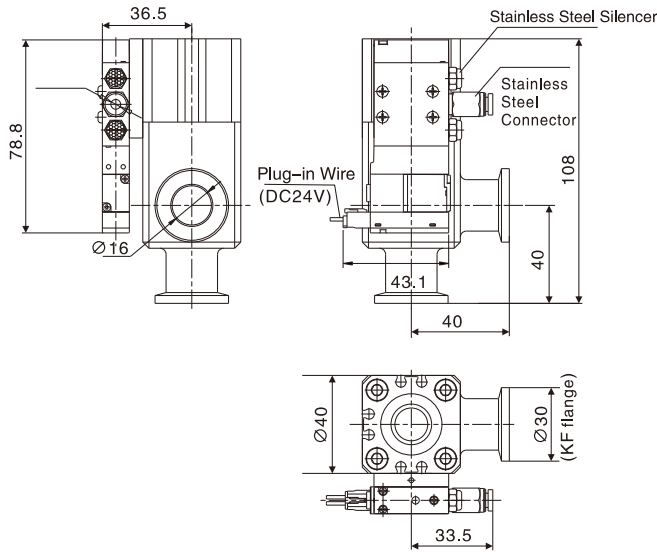
EXLC/G63



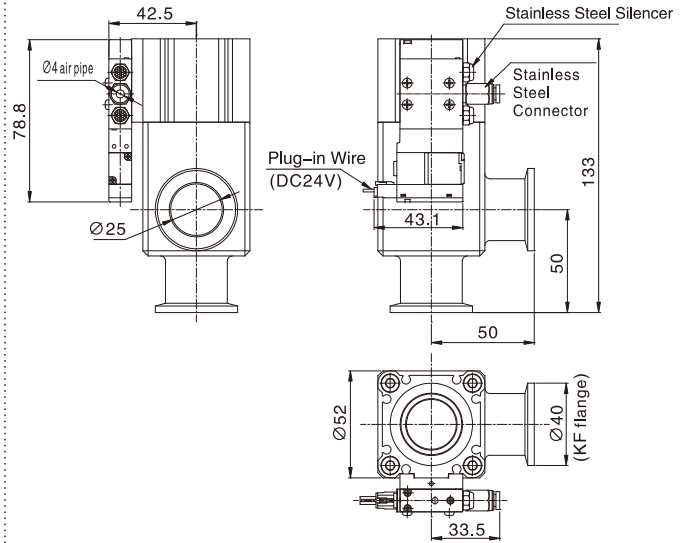
EXLC(V)/G(V) Series High Vacuum Angle Valve

Dimensions

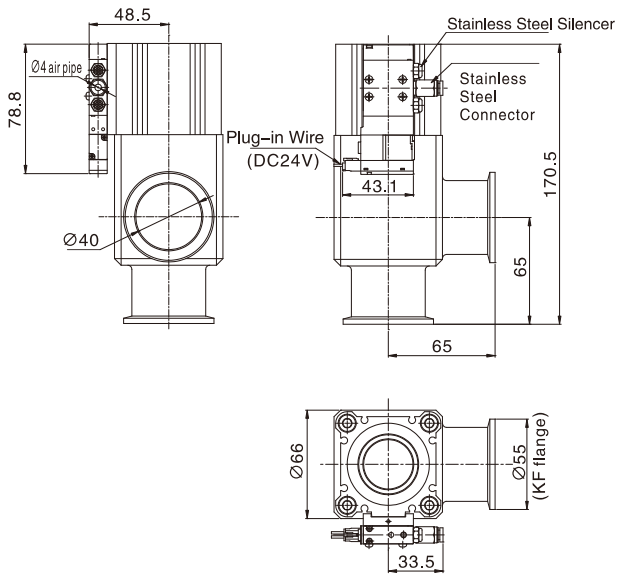
EXLCV/GV16K



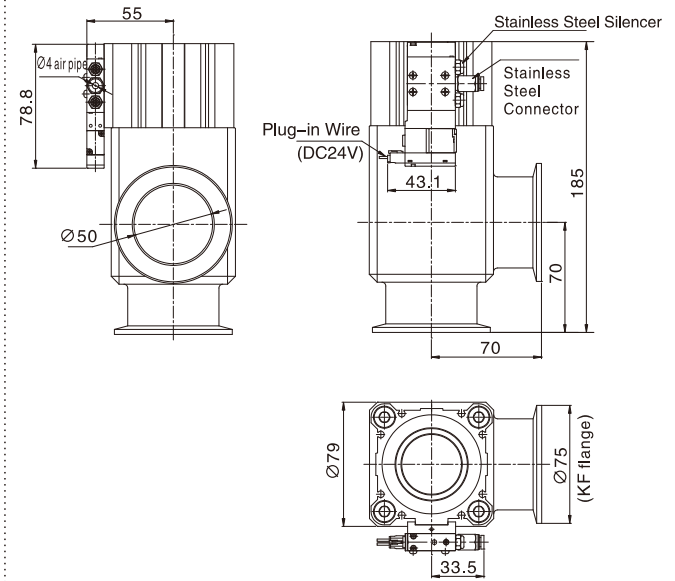
EXLCV/GV25K



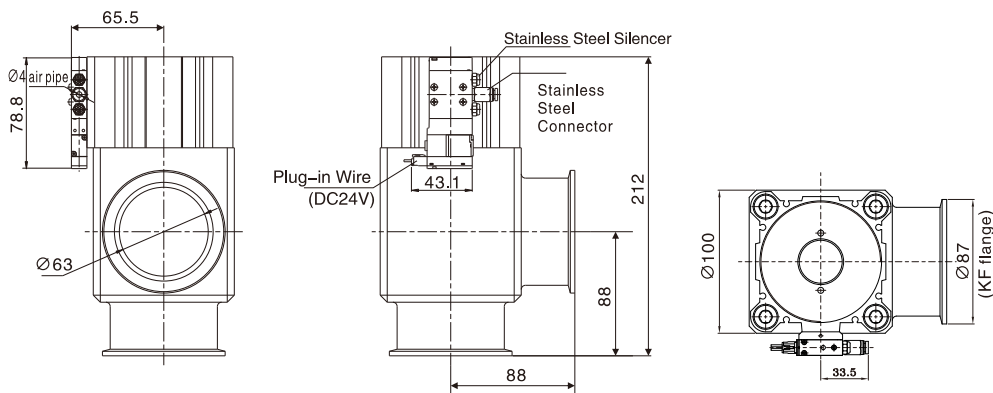
EXLCV/GV40K



EXLCV/GV50K



EXLCV/GV63K



8
EXLC(V)
/G(V)