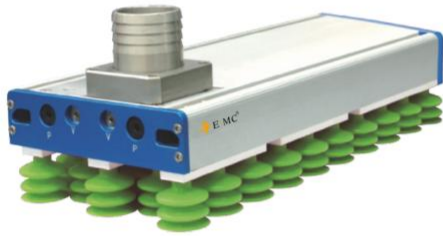


EGP200-S-E Vacuum Gripper(External Vacuum Source)

EGP200-S-E

Vacuum Gripper(External Vacuum Source)



Product Features

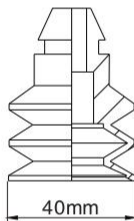
- Suitable for different industry products grabbing, meet various specifications.
- Flexible selection of standard or customized gripper, suction of different sizes can be freely combined and used.
- Optional self-closing valve technology can solve workpieces with large vacuum leakage, uneven surface, different sizes and geometric shapes.
- Vacuum source can be connected to an external vacuum generator, suitable for using with electrically driven vacuum devices (blowers or vacuum pumps).
- Modular design for easy maintenance.
- The interface is reserved, and functional components can be directly added to the gripper, the process has been optimized, environmental protection and energy saving.
- The material is aluminum alloy, factory plastic and carbon fiber composite material, which has the characteristics of high strength and light weight.
- Easy to install, with T-type removable mounting slider, available for fixing grippers as well as for mounting or mounting sensors.
- Rubber sealing gasket accessory for quick replacement.

How to Order?

Series No.	Gripper Width	Gripper Length	Valve Technology	Suction-hole Type	Gripper Diameter Type	Vacuum Source
EGP: Vacuum gripper	200:200mm	273:273mm 458:458mm 550:550mm 643:643mm 735:735mm	828:828mm 920:920mm 1012:1012mm 1243:1243mm 1428:1428mm	V:Self-closing valve L:Flow valve S:High-speed valve	5: Five rows embedded module 9: Nine rows embedded module	S40: Gripper diameter 40 S20: Gripper diameter 20 E:Connection interface for external vacuum generator

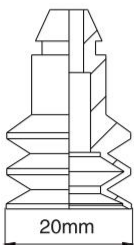
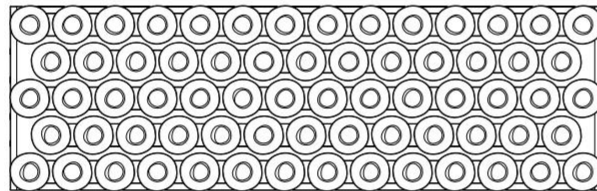
Order Example EGP series vacuum gripper, gripper width 200mm, gripper length 400mm, self-closing valve, five rows embedded module, gripper diameter 40mm, connection interface for external vacuum generator. EPR code is: EGP200-4000V-5S40-E

Gripper Accessory Series No.



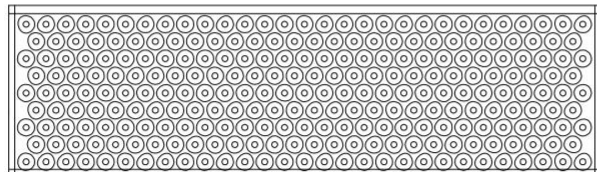
Gripper Accessory Series No: S40

Gripper diameter 40MM
Gripper uses 5 rows
Suction-hole Type:5



Gripper Accessory Series No: S20

Gripper diameter 20MM
Gripper uses 9 rows
Suction-hole Type:9



EGP200-S-E Vacuum Gripper(External Vacuum Source)



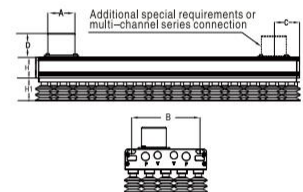
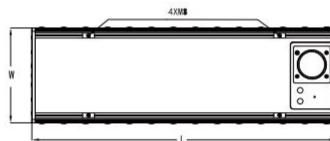
Performance Parameter

Model	Suction-hole Type	Gripper Type	Supply Gas Pressure (MPa)	Gripper Number	Gas Consumption (L/min)	Vacuum Degree (kPa)	Vacuum Flow (L/min)	Suction Force N(-60kPa)	Weight (kg)
EGP200-273V-5S40-E	5	S40	0.4-0.6	28	100	-40	350	418	3.3
EGP200-458V-5S40-E	5	S40	0.4-0.6	48	300	-40	1050	716	4.4
EGP200-550V-5S40-E	5	S40	0.4-0.6	58	400	-40	1400	866	5
EGP200-643V-5S40-E	5	S40	0.4-0.6	68	400	-40	1400	1015	5.5
EGP200-735V-5S40-E	5	S40	0.4-0.6	78	400	-40	1400	1164	6.1
EGP200-828V-5S40-E	5	S40	0.4-0.6	88	400	-40	1400	1313	6.7
EGP200-920V-5S40-E	5	S40	0.4-0.6	98	500	-40	1750	1462	7.2
EGP200-1012V-5S40-E	5	S40	0.4-0.6	108	500	-40	1750	1612	7.7
EGP200-1243V-5S40-E	5	S40	0.4-0.6	133	600	-40	2100	1985	9.1
EGP200-1428V-5S40-E	5	S40	0.4-0.6	153	600	-40	2100	2283	10.2
EGP200-273V-9S20-E	9	S20	0.4-0.6	95	200	-40	700	475	3.3
EGP200-458V-9S20-E	9	S20	0.4-0.6	167	300	-40	1050	835	4.4
EGP200-550V-9S20-E	9	S20	0.4-0.6	203	400	-40	1400	1015	5
EGP200-643V-9S20-E	9	S20	0.4-0.6	239	400	-40	1400	1195	5.5
EGP200-735V-9S20-E	9	S20	0.4-0.6	275	500	-40	1750	1375	6.1
EGP200-828V-9S20-E	9	S20	0.4-0.6	311	600	-40	2100	1555	6.7
EGP200-920V-9S20-E	9	S20	0.4-0.6	347	600	-40	2100	1735	7.2
EGP200-1012V-9S20-E	9	S20	0.4-0.6	383	600	-40	2100	1915	7.7
EGP200-1243V-9S20-E	9	S20	0.4-0.6	473	800	-40	2800	2365	9.1
EGP200-1428V-9S20-E	9	S20	0.4-0.6	545	800	-40	2800	2725	10.2

Main Dimension

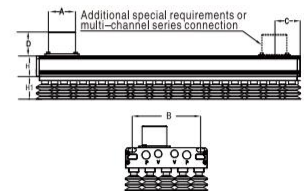
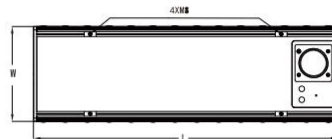
Dimension[mm]

Model	A	B	C	D	L	W	H	H1
EGP200-273V-5S40-E	60 (32)	168	69	54	273	200	105	55
EGP200-458V-5S40-E	60(32)	168	69	54	458	200	105	55
EGP200-550V-5S40-E	60 (32)	168	69	54	550	200	105	55
EGP200-643V-5S40-E	60 (32)	168	69	54	643	200	105	55
EGP200-735V-5S40-E	60(32)	168	69	54	735	200	105	55
EGP200-828V-5S40-E	60 (32)	168	69	54	828	200	105	55
EGP200-920V-5S40-E	60 (32)	168	69	54	920	200	105	55
EGP200-1012V-5S40-E	60 (32)	168	69	54	1012	200	105	55
EGP200-1243V-5S40-E	60 (32)	168	69	54	1243	200	105	55
EGP200-1428V-5S40-E	60 (32)	168	69	54	1428	200	105	55



Dimension[mm]

Model	A	B	C	D	L	w	H	H1
EGP200-273V-9S20-E	60 (32)	168	69	54	273	200	105	55
EGP200-458V-9S20-E	60(32)	168	69	54	458	200	105	55
EGP200-550V-9S20-E	60 (32)	168	69	54	550	200	105	55
EGP200-643V-9S20-E	60 (32)	168	69	54	643	200	105	55
EGP200-735V-9S20-E	60(32)	168	69	54	735	200	105	55
EGP200-828V-9S20-E	60 (32)	168	69	54	828	200	105	55
EGP200-920V-9S20-E	60 (32)	168	69	54	920	200	105	55
EGP200-1012V-9S20-E	60 (32)	168	69	54	1012	200	105	55
EGP200-1243V-9S20-E	60 (32)	168	69	54	1243	200	105	55
EGP200-1428V-9S20-E	60 (32)	168	69	54	1428	200	105	55



EG Series Vacuum Gripper

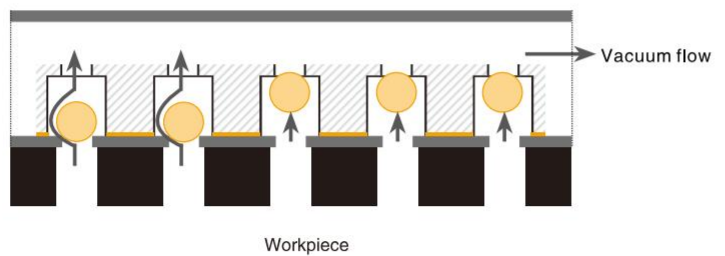
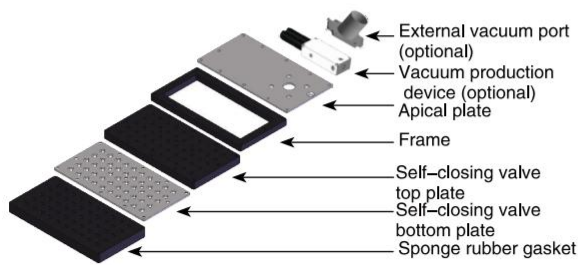
Introduction of Vacuum Gripper System

E · MC Technology can provide you with a complete vacuum handling system according to your vacuum handling project needs. Focus on technological innovation and product performance stability and optimize the overall solution to ensure the economy and efficiency of optimization services, providing a full range of services to meet your different project needs.

Through professionally trained sales engineers and R&D managers, we can provide you with various fast consultations and solutions to meet your various requirements. E · MC provides you with a complete set of standard products, and can also design special customized grippers according to the special requirements of customers.

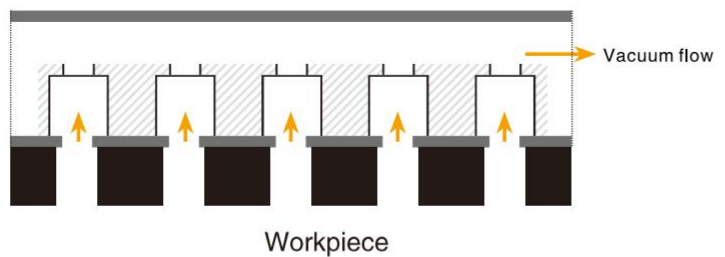
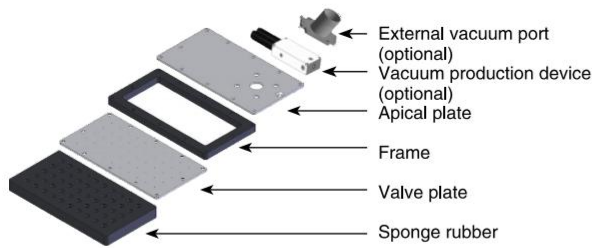
Self-Closing Valve Gripper

- Each hole has a built-in independent vacuum chamber self-closing valve (non-return valve).
- After the vacuum is established, maintain a stable vacuum degree.
- The holes that do not touch the workpiece can be automatically closed to reduce vacuum leakage.
- No need for any adjustments, automatic identification of workpieces, strong compatibility.

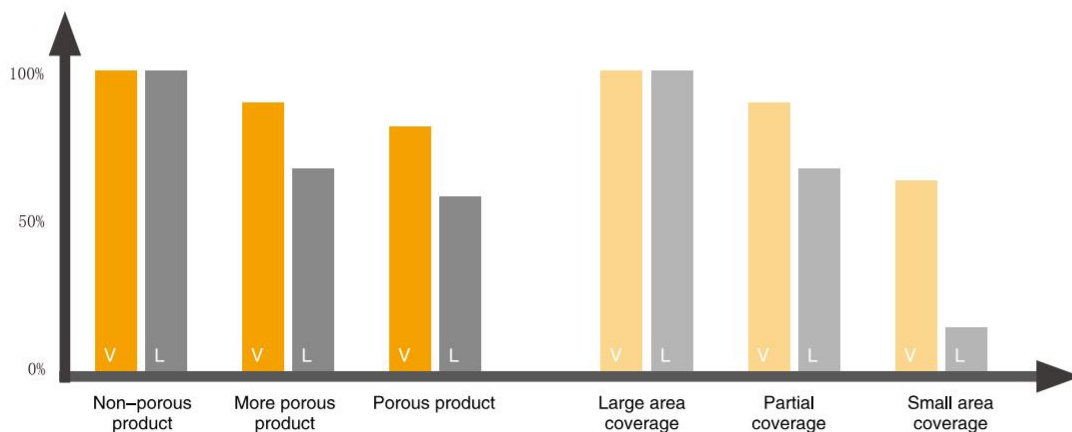


Flow Valve Gripper (L)

- Internally designed flow valves of different sizes (restrictor valves).
- Light weight, thinner body.
- Allows for higher gripping speeds and fast vacuum build-up.
- The gripper can work at any angle of 360 degrees, suitable for flipping motion.
- Lower cost process construction.

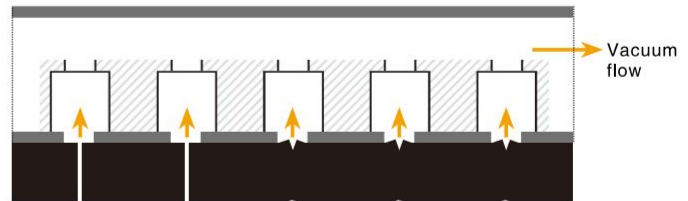
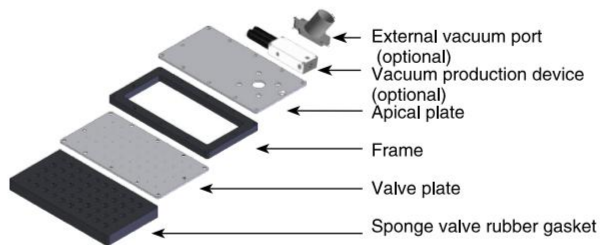


Grabbing Ability Comparison



☉ Sponge Valve Gripper (F)

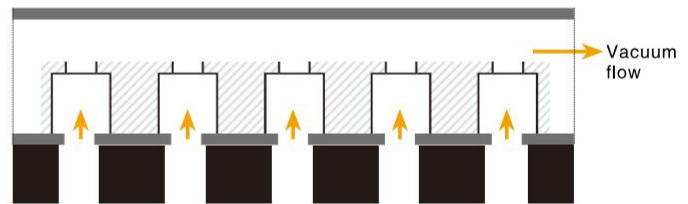
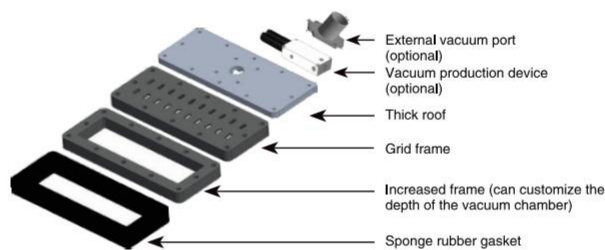
- Use the sealing performance of the sponge itself to form an independent vacuum chamber self-closing valve (one-way valve).
- The holes that do not touch the workpiece can be automatically closed to reduce vacuum flow leakage.
- Suitable for open products (bottles and cans) or workpieces with large surface unevenness.



Open workpiece

☉ Bag Cavity Gripper (B)

- Rely on the large flow of vacuum source and the sealing performance of the vacuum gripper rubber gasket to form a vacuum.
- Handling soft bag.
 - Handling shrink-wrapped products



Bag workpiece

☉ Features

- EG non-standard customized vacuum gripper system, with self-closing valve technology can automatically detect and close the position that is not in contact with the workpiece, or flow valve technology can reduce vacuum leakage and make up for vacuum with large flow pumping, so that we can use the same gripper can handle various working conditions blank readjustment or program changes.
- Suitable gaskets can be configured according to the actual situation to provide good bonding effect, long service life and strong sealing performance.
- Self-closing valve cavity structure is designed inside the gripper (hole shape, hole spacing, and hole quantity can be designed and arranged according to the working conditions to maximize compatibility.)
- Vacuum source configuration can choose high efficiency, energy saving, low consumption and large flow of multi-stage jet technology vacuum generator. Alternatively, the electric drive vacuum source can be added through the external vacuum port, and the twin turbine high-pressure air pump or vacuum pump can be selected. Increase working speed while reducing energy consumption.
- The system can be equipped with vacuum valve control, vacuum detection sensor and falling part detection sensor, mechanical heavy-duty floating flange, including installation accessories and pipe joint accessories, providing a full range of supporting services for the automation system.

Application Feature	Self-closing valve	Flow Valve
Minimize interference caused by mismatch between pipe diameter and external vacuum generating device (highly integrated)	•	
Easy to install, quick to connect	•	
Minimized system costs (input costs include vacuum generating unit, hoses and controllers)	•	
Minimized operating costs (due to the choice of electric vacuum generator), especially when several grippers are used	•	
Handling highly air-permeable workpieces	•	•

Application Characteristic	Sponge	Gripper
Rigid workpieces such as plates, sheet metal, profiles and pallets	•	•
Flexible workpieces such as cardboard boxes, bags, bags and pallets	•	•
Long and narrow workpieces and plates	•	•
The surface of the workpiece is rough and has modeling lines	•	
Full layer handling of small workpieces such as tins (open/closed), cans	•	