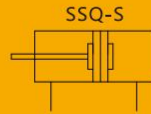


## SSQ Compact Cylinder



### Specifications

Bore(mm)	12	16	20	25
Acting type	Double Acting			
Working medium	Clean Air(40 μm filtration)			
Working pressure	0.1~1.0MPa			
Guaranteed pressure	1.5MPa(215psi)			
Working temperature °C	-20~70(No freezing)			
Speed range mm/s	50 ~ 500			
Stroke tolerance mm	Standard stroke $^{+1}_0$ Long stroke $^{+1.4}_0$			
Cushion type	Rubber cushion			

### Product Features

1. The magnetic switch of each cylinder bore has 3 mounting surfaces to choose from.
2. Compact design, save more installation space.
3. Inner hole adopts hard oxidation process, good wear resistance and durability.
4. Installation position is combined with the through hole type and the thread type, convenient to install.

### How to Order?

Series No	Type No	Bore X Stroke	Magnet No	Piston Rod Thread Type
SSQ	Blank: Basic type	12 16 20 25	S: With magnet Blank: No magnet	M: Male thread Blank: Female thread

#### Order Example:

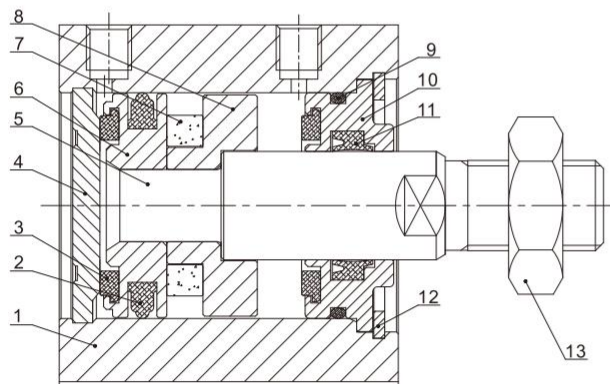
SSQ Series cylinder, 25mm bore, 50mm stroke, with magnet, female thread on piston rod.  
ERP code is: SSQ25X50-S

### Stroke

Bore (mm)	Standard Stroke(mm)	Long Stroke(mm)
12	5 10 15 20 25 30	35 40 45 50
16	5 10 15 20 25 30 35 40 45 50	75 100 125 150
20		
25		

"Note: The dimensions of non-std stroke cylinder has the same dimensions as the next longer stroke std. stroke cylinder.  
e.g. 39mm stroke cylinder has the same dimensions of 40 std. stroke cylinder."

### Internal Structure



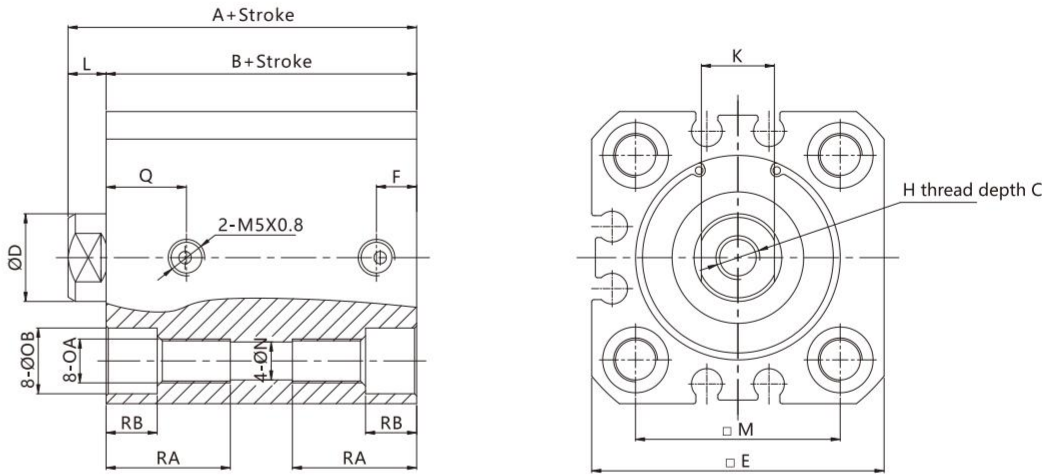
No	Part Name	Material
1	Barrel	Aluminum alloy
2	Piston seal	NBR
3	Anti-bump cushion	TPU
4	Rear cover	Aluminum alloy
5	Piston rod	S45C hard chrome carbon steel
6	Piston	Brass(Bore 12/16) Aluminum alloy(Bore 20/25)
7	Integrated magnet	Sintered NdFeB
8	Magnet base	Aluminum alloy
9	O-ring	NBR
10	Head cover	Brass(Bore 12/16) Aluminum alloy(Bore 20/25)
11	Piston rod seal	NBR
12	C type retainer ring	Spring steel
13	Nut	Carbon steel

# SSQ Series Compact Cylinder



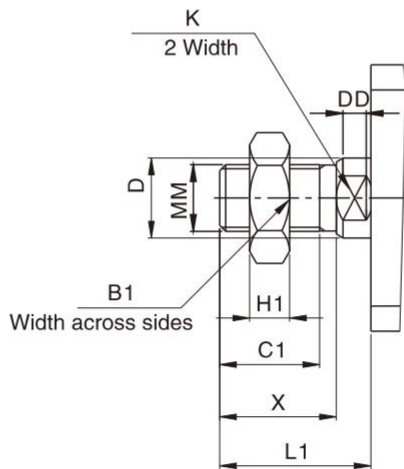
## External Dimensions

SSQ



Bore/Sign	Standard stroke										Long stroke					C	D	E	H	K	M	N	OA	OB	RA	RB
	no magnet					with magnet					A	B	F	Q	L											
	A	B	F	Q	L	A	B	F	Q	L																
12	20.5	17	5	7.5	3.5	25.5	22	5	7.5	3.5	45.5	32	7	9	13.5	6	6	25	M3X0.5	5	15.5	3.4	M4X0.7	5.8	7	4
16	20.5	17	5	7.5	3.5	25.5	22	5	7.5	3.5	45.5	32	7	9.5	13.5	8	8	29	M4X0.7	6	20	3.4	M4X0.7	6.5	7	4
20	24	19.5	5.5	9	4.5	34	29.5	5.5	9	4.5	55.5	41	5.5	9.5	14.5	7	10	36	M5X0.8	8	25.5	5.2	M6X1.0	9	10	7
25	27.5	22.5	5.5	11	5	37.5	32.5	5.5	11	5	59	44	5.5	12.5	15	12	12	40	M6X1.0	10	28	5.5	M6X1.0	9	10	7

## Male Type Dimension



Bore/Sign	B1	D	MM	H1	C1	X	L1		K	DD
							Standard stroke	Long stroke		
12	8	6	M5X0.8	4	9	10.5	14	24	5	3.5
16	10	8	M6X1.0	5	10	12	15.5	25.5	6	3
20	12	10	M8X1.25	6	12	14	18.5	28.5	8	4
25	17	12	M10X1.25	6	15	17.5	22.5	32.5	10	4.5