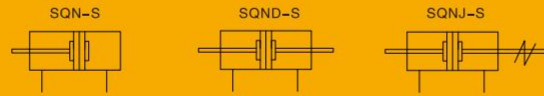


## SQN

Compact Cylinder (Large bore size)



### Specifications

Bore(mm)	125	140
Acting type	Double Acting	
Working medium	Clean Air(40 μm filtration)	
Working pressure(MPa)	0.15~1.0MPa(22~145psi)(1.5~10bar)	
Garanteed pressure(MPa)	1.5MPa(215psi)	
Working temperature(°C)	-20~70	
Speed range(mm/s)	30 ~ 500	
Stroke tolerance range	Stroke ≤ 100 $+1_0$	Stroke > 100 $+1.5_0$
Cushion type	Rubber cushion	
Port size	G, PT, NPT port is optional	

### Product features

1. According to JIS standard
2. Cylinder body and cylinder rear covers are fixed by C Type rings, stable and compact
3. Inside hole manufacture by hardness oxidation process, wearproof and long life span.
4. Compact design, save assembly space
5. Cylinder has two type sensor hole, multiple choice, easy operation
6. Multiple port size is optional.

### How to Order?

Series No.	Type No.	Bore X Stroke	Adjustable Stroke	Magnet	Piston Rod Thread Type	Thread Type
SQN		125 140	10 20 30 40 50 75 100	S: with magnet Blank: without magnet	M: male thread Blank: female thread	Blank: G P: PT T: NPT

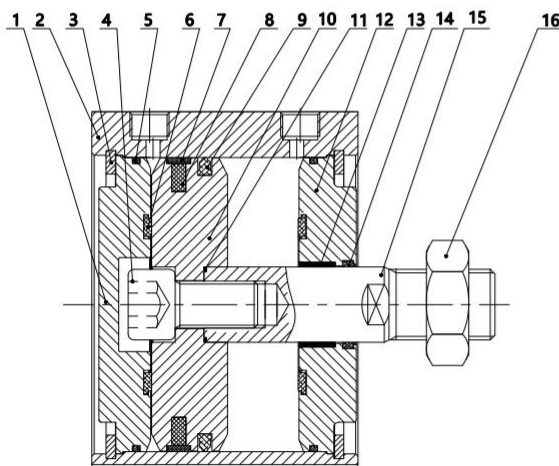
### Stroke

Bore(mm)	Standard Stroke(mm)	Max. Stroke(mm)
125	10 20 30 40 50 75 100 125 150 175 200 250 300	300
140		

### Order Example:

SQN Series Double shaft type and adjustable stroke, 125mm bore, 50mm stroke, adjustable 50mm stroke, with magnet, female thread on piston rod, G thread.  
ERP code: SQNJ125X50-50-S

### Internal Structure



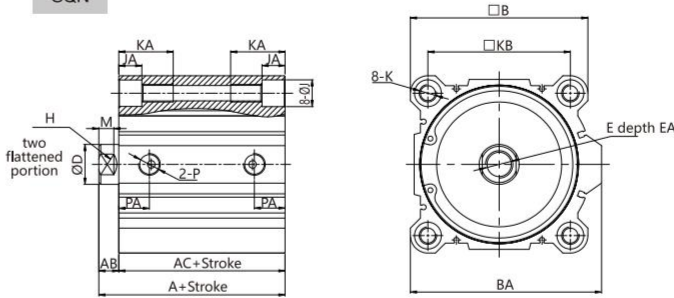
NO.	Part name	Material
1	rear cover	Aluminum
2	Barrel	Aluminum
3	C type retainer ring	Spring steel
4	Hexagon socket head cap screws	Carbon Steel
5	O ring	NBR
6	Anti-bump cushion	NBR
7	Wear ring	PTFE
8	Split type magnet	Plastic rubber
9	Piston rod seal	NBR
10	Piston	Aluminum
11	O-ring	NBR
12	Head cover	Aluminum
13	Bearing	Composite material
14	Head cover dust ring	NBR
15	Piston rod	S45C hard chrome carbon steel
16	hexagon nut	Carbon Steel

# SQN Series Compact Cylinder (Large bore size)



## Main Dimension

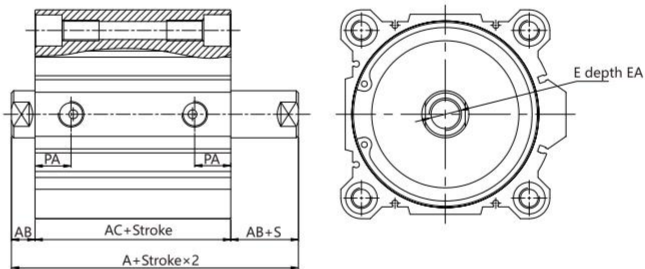
SQN



Bore/Sign	A	AB	AC	B	BA	D	E	EA(St≤10)	EA(St>10)	H
125	99	16	83	142	153	32	M22X2.5	22.5	30	27
140	99	16	83	158	168	32	M22X2.5	22.5	30	27

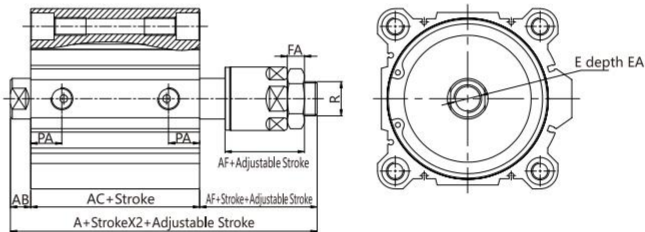
Bore/Sign	J	JA	K	KA	KB	P	PA	M
125	21.5	18.4	M14X2 thorough hole: Ø12.3	43.5	114	G3/8	24.5	12
140	21.5	18.4	M14X2 thorough hole: Ø12.3	43.5	128	G3/8	24.5	12

SQND



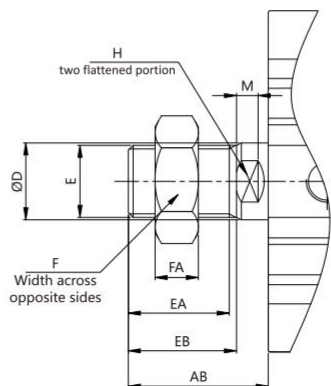
Bore/Sign	A	AB	AC	E	EA(St≤10)	EA(St>10)	PA
125	115	16	83	M22X2.5	22.5	30	24.5
140	115	16	83	M22X2.5	22.5	30	24.5

SQNJ



Bore/Sign	A	AB	AC	AF	E	EA(St≤10)	EA(St>10)	FA	PA	R
125	140.8	16	83	42.5	M22X2.5	22.5	30	13.5	24.5	M27X2
140	140.8	16	83	42.5	M22X2.5	22.5	30	13.5	24.5	M27X2

## Male Thread Type Dimension



Bore/Sign	AB	D	AF	E	EA	EB	F	FA	H	M
125	58	32	42.5	M30X1.5	42	45	45	18	27	9
140	58	32	42.5	M30X1.5	42	45	45	18	27	9