

## SHR Air gripper

SHR: Standard double acting, magnet built-in



### Specifications

Bore size(mm)	10	16	20	25
Action type	Double Acting			
Working medium	Clean Air(40 μm filtration)			
Operating pressure	0.15~0.7MPa(22~100psi)(1.5~7.0bar)			
Ambient and fluid temperature(°C)	-20~70( No freezing)			
Lubrication	Cylinder: Not required Gripper: Grease required			
Theoretical gripping force (N.m)①	0.16	0.55	1.10	2.30
Max. operating frequency	60(C.P.M)			
Opening/Closing angle (°)	Open:180±2, Close:-2~5			
Repeatability (mm)	±0.2			
Cushion type	Rubber cushion			
Port size	M5X0.8			
Weight(g)	67	142	312	552

① The indicated gripping forces were measured at room temperature at an operating pressure of 0.5Mpa

### How to Order?

Series	Bore	Magnet No.
SHR:180° Open/Close Style Air gripper	10 16 20 25	S : With magnet (Magnet is standard)

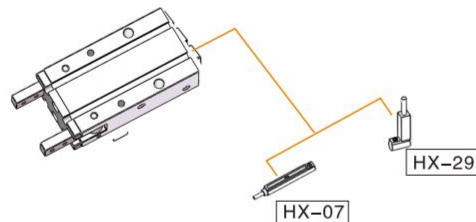
#### Order Example:

SHR Series 180° Open/Close Style Air gripper, Bore25, with magnet, ERP code is: SHR25-S

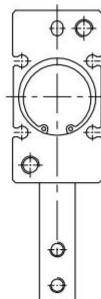
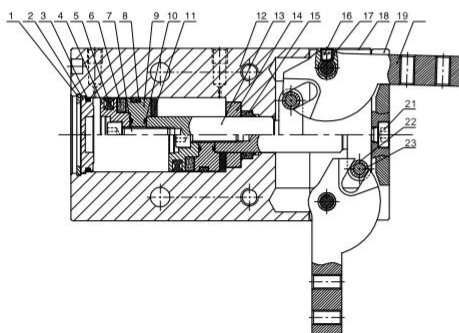
### Product Features

1. Unique design for the opening and closing, effectively preventing foreign objects from entering
2. Special shutter used between fingers and body, reducing wearing and extending lifetime
3. 180° opening and closing type, simplify gripping and releasing, avoid workpiece motion space, wider applications
4. Built-in sensor switch groove, easy for mounting
5. Multi mounting types, convenient for using under different conditions
6. All sizes are built with magnet, easy for controlling

### Optional Accessory



### Internal Structure

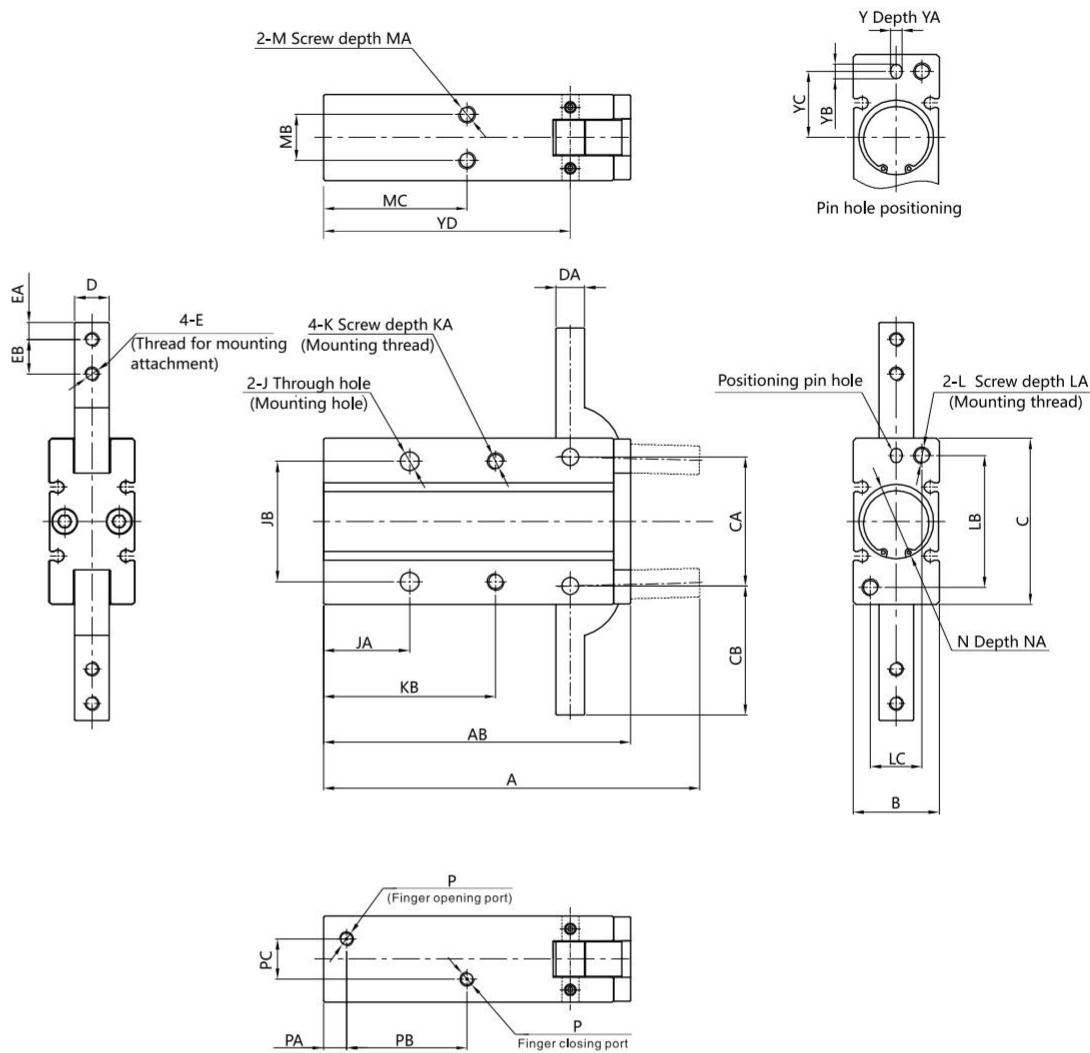


No.	Part Name	Material	No.	Part Name	Material
1	Type C retaining ring	Spring steel	13	Joint	Stainless steel
2	Rear cover	Aluminum alloy	14	Dust baffle	Brass
3	O-ring	NBR	15	Piston rod seal	NBR
4	Piston	Aluminum alloy	16	Hexagon socket set screw	Carbon steel
5	Piston seal	NBR	17	Pin	Stainless steel
6	Rutile Boron	Rutile Boron	18	Blade	Stainless steel (φ16, φ20, φ25) φ10±
7	Hexagon socket cap screw	φ10 φ12 φ16 φ20 φ25 φ30 φ36 φ42 φ48 φ54 φ60 φ66 φ72 φ78 φ84 φ90 φ96 φ102 φ108 φ114 φ120 φ126 φ132 φ138 φ144 φ150 φ156 φ162 φ168 φ174 φ180 φ186 φ192 φ198 φ204 φ210 φ216 φ222 φ228 φ234 φ240 φ246 φ252 φ258 φ264 φ270 φ276 φ282 φ288 φ294 φ300 φ306 φ312 φ318 φ324 φ330 φ336 φ342 φ348 φ354 φ360 φ366 φ372 φ378 φ384 φ390 φ396 φ402 φ408 φ414 φ420 φ426 φ432 φ438 φ444 φ450 φ456 φ462 φ468 φ474 φ480 φ486 φ492 φ498 φ504 φ510 φ516 φ522 φ528 φ534 φ540 φ546 φ552 φ558 φ564 φ570 φ576 φ582 φ588 φ594 φ600 φ606 φ612 φ618 φ624 φ630 φ636 φ642 φ648 φ654 φ660 φ666 φ672 φ678 φ684 φ690 φ696 φ702 φ708 φ714 φ720 φ726 φ732 φ738 φ744 φ750 φ756 φ762 φ768 φ774 φ780 φ786 φ792 φ798 φ804 φ810 φ816 φ822 φ828 φ834 φ840 φ846 φ852 φ858 φ864 φ870 φ876 φ882 φ888 φ894 φ900 φ906 φ912 φ918 φ924 φ930 φ936 φ942 φ948 φ954 φ960 φ966 φ972 φ978 φ984 φ990 φ996 φ1002 φ1008 φ1014 φ1020 φ1026 φ1032 φ1038 φ1044 φ1050 φ1056 φ1062 φ1068 φ1074 φ1080 φ1086 φ1092 φ1098 φ1104 φ1110 φ1116 φ1122 φ1128 φ1134 φ1140 φ1146 φ1152 φ1158 φ1164 φ1170 φ1176 φ1182 φ1188 φ1194 φ1200 φ1206 φ1212 φ1218 φ1224 φ1230 φ1236 φ1242 φ1248 φ1254 φ1260 φ1266 φ1272 φ1278 φ1284 φ1290 φ1296 φ1302 φ1308 φ1314 φ1320 φ1326 φ1332 φ1338 φ1344 φ1350 φ1356 φ1362 φ1368 φ1374 φ1380 φ1386 φ1392 φ1398 φ1404 φ1410 φ1416 φ1422 φ1428 φ1434 φ1440 φ1446 φ1452 φ1458 φ1464 φ1470 φ1476 φ1482 φ1488 φ1494 φ1500 φ1506 φ1512 φ1518 φ1524 φ1530 φ1536 φ1542 φ1548 φ1554 φ1560 φ1566 φ1572 φ1578 φ1584 φ1590 φ1596 φ1602 φ1608 φ1614 φ1620 φ1626 φ1632 φ1638 φ1644 φ1650 φ1656 φ1662 φ1668 φ1674 φ1680 φ1686 φ1692 φ1698 φ1704 φ1710 φ1716 φ1722 φ1728 φ1734 φ1740 φ1746 φ1752 φ1758 φ1764 φ1770 φ1776 φ1782 φ1788 φ1794 φ1800 φ1806 φ1812 φ1818 φ1824 φ1830 φ1836 φ1842 φ1848 φ1854 φ1860 φ1866 φ1872 φ1878 φ1884 φ1890 φ1896 φ1902 φ1908 φ1914 φ1920 φ1926 φ1932 φ1938 φ1944 φ1950 φ1956 φ1962 φ1968 φ1974 φ1980 φ1986 φ1992 φ1998 φ2004 φ2010 φ2016 φ2022 φ2028 φ2034 φ2040 φ2046 φ2052 φ2058 φ2064 φ2070 φ2076 φ2082 φ2088 φ2094 φ2100 φ2106 φ2112 φ2118 φ2124 φ2130 φ2136 φ2142 φ2148 φ2154 φ2160 φ2166 φ2172 φ2178 φ2184 φ2190 φ2196 φ2202 φ2208 φ2214 φ2220 φ2226 φ2232 φ2238 φ2244 φ2250 φ2256 φ2262 φ2268 φ2274 φ2280 φ2286 φ2292 φ2298 φ2304 φ2310 φ2316 φ2322 φ2328 φ2334 φ2340 φ2346 φ2352 φ2358 φ2364 φ2370 φ2376 φ2382 φ2388 φ2394 φ2400 φ2406 φ2412 φ2418 φ2424 φ2430 φ2436 φ2442 φ2448 φ2454 φ2460 φ2466 φ2472 φ2478 φ2484 φ2490 φ2496 φ2502 φ2508 φ2514 φ2520 φ2526 φ2532 φ2538 φ2544 φ2550 φ2556 φ2562 φ2568 φ2574 φ2580 φ2586 φ2592 φ2598 φ2604 φ2610 φ2616 φ2622 φ2628 φ2634 φ2640 φ2646 φ2652 φ2658 φ2664 φ2670 φ2676 φ2682 φ2688 φ2694 φ2700 φ2706 φ2712 φ2718 φ2724 φ2730 φ2736 φ2742 φ2748 φ2754 φ2760 φ2766 φ2772 φ2778 φ2784 φ2790 φ2796 φ2802 φ2808 φ2814 φ2820 φ2826 φ2832 φ2838 φ2844 φ2850 φ2856 φ2862 φ2868 φ2874 φ2880 φ2886 φ2892 φ2898 φ2904 φ2910 φ2916 φ2922 φ2928 φ2934 φ2940 φ2946 φ2952 φ2958 φ2964 φ2970 φ2976 φ2982 φ2988 φ2994 φ3000 φ3006 φ3012 φ3018 φ3024 φ3030 φ3036 φ3042 φ3048 φ3054 φ3060 φ3066 φ3072 φ3078 φ3084 φ3090 φ3096 φ3102 φ3108 φ3114 φ3120 φ3126 φ3132 φ3138 φ3144 φ3150 φ3156 φ3162 φ3168 φ3174 φ3180 φ3186 φ3192 φ3198 φ3204 φ3210 φ3216 φ3222 φ3228 φ3234 φ3240 φ3246 φ3252 φ3258 φ3264 φ3270 φ3276 φ3282 φ3288 φ3294 φ3300 φ3306 φ3312 φ3318 φ3324 φ3330 φ3336 φ3342 φ3348 φ3354 φ3360 φ3366 φ3372 φ3378 φ3384 φ3390 φ3396 φ3402 φ3408 φ3414 φ3420 φ3426 φ3432 φ3438 φ3444 φ3450 φ3456 φ3462 φ3468 φ3474 φ3480 φ3486 φ3492 φ3498 φ3504 φ3510 φ3516 φ3522 φ3528 φ3534 φ3540 φ3546 φ3552 φ3558 φ3564 φ3570 φ3576 φ3582 φ3588 φ3594 φ3600 φ3606 φ3612 φ3618 φ3624 φ3630 φ3636 φ3642 φ3648 φ3654 φ3660 φ3666 φ3672 φ3678 φ3684 φ3690 φ3696 φ3702 φ3708 φ3714 φ3720 φ3726 φ3732 φ3738 φ3744 φ3750 φ3756 φ3762 φ3768 φ3774 φ3780 φ3786 φ3792 φ3798 φ3804 φ3810 φ3816 φ3822 φ3828 φ3834 φ3840 φ3846 φ3852 φ3858 φ3864 φ3870 φ3876 φ3882 φ3888 φ3894 φ3900 φ3906 φ3912 φ3918 φ3924 φ3930 φ3936 φ3942 φ3948 φ3954 φ3960 φ3966 φ3972 φ3978 φ3984 φ3990 φ3996 φ4002 φ4008 φ4014 φ4020 φ4026 φ4032 φ4038 φ4044 φ4050 φ4056 φ4062 φ4068 φ4074 φ4080 φ4086 φ4092 φ4098 φ4104 φ4110 φ4116 φ4122 φ4128 φ4134 φ4140 φ4146 φ4152 φ4158 φ4164 φ4170 φ4176 φ4182 φ4188 φ4194 φ4200 φ4206 φ4212 φ4218 φ4224 φ4230 φ4236 φ4242 φ4248 φ4254 φ4260 φ4266 φ4272 φ4278 φ4284 φ4290 φ4296 φ4302 φ4308 φ4314 φ4320 φ4326 φ4332 φ4338 φ4344 φ4350 φ4356 φ4362 φ4368 φ4374 φ4380 φ4386 φ4392 φ4398 φ4404 φ4410 φ4416 φ4422 φ4428 φ4434 φ4440 φ4446 φ4452 φ4458 φ4464 φ4470 φ4476 φ4482 φ4488 φ4494 φ4500 φ4506 φ4512 φ4518 φ4524 φ4530 φ4536 φ4542 φ4548 φ4554 φ4560 φ4566 φ4572 φ4578 φ4584 φ4590 φ4596 φ4602 φ4608 φ4614 φ4620 φ4626 φ4632 φ4638 φ4644 φ4650 φ4656 φ4662 φ4668 φ4674 φ4680 φ4686 φ4692 φ4698 φ4704 φ4710 φ4716 φ4722 φ4728 φ4734 φ4740 φ4746 φ4752 φ4758 φ4764 φ4770 φ4776 φ4782 φ4788 φ4794 φ4800 φ4806 φ4812 φ4818 φ4824 φ4830 φ4836 φ4842 φ4848 φ4854 φ4860 φ4866 φ4872 φ4878 φ4884 φ4890 φ4896 φ4902 φ4908 φ4914 φ4920 φ4926 φ4932 φ4938 φ4944 φ4950 φ4956 φ4962 φ4968 φ4974 φ4980 φ4986 φ4992 φ4998 φ5004 φ5010 φ5016 φ5022 φ5028 φ5034 φ5040 φ5046 φ5052 φ5058 φ5064 φ5070 φ5076 φ5082 φ5088 φ5094 φ5100 φ5106 φ5112 φ5118 φ5124 φ5130 φ5136 φ5142 φ5148 φ5154 φ5160 φ5166 φ5172 φ5178 φ5184 φ5190 φ5196 φ5202 φ5208 φ5214 φ5220 φ5226 φ5232 φ5238 φ5244 φ5250 φ5256 φ5262 φ5268 φ5274 φ5280 φ5286 φ5292 φ5298 φ5304 φ5310 φ5316 φ5322 φ5328 φ5334 φ5340 φ5346 φ5352 φ5358 φ5364 φ5370 φ5376 φ5382 φ5388 φ5394 φ5400 φ5406 φ5412 φ5418 φ5424 φ5430 φ5436 φ5442 φ5448 φ5454 φ5460 φ5466 φ5472 φ5478 φ5484 φ5490 φ5496 φ5502 φ5508 φ5514 φ5520 φ5526 φ5532 φ5538 φ5544 φ5550 φ5556 φ5562 φ5568 φ5574 φ5580 φ5586 φ5592 φ5598 φ5604 φ5610 φ5616 φ5622 φ5628 φ5634 φ5640 φ5646 φ5652 φ5658 φ5664 φ5670 φ5676 φ5682 φ5688 φ5694 φ5700 φ5706 φ5712 φ5718 φ5724 φ5730 φ5736 φ5742 φ5748 φ5754 φ5760 φ5766 φ5772 φ5778 φ5784 φ5790 φ5796 φ5802 φ5808 φ5814 φ5820 φ5826 φ5832 φ5838 φ5844 φ5850 φ5856 φ5862 φ5868 φ5874 φ5880 φ5886 φ5892 φ5898 φ5904 φ5910 φ5916 φ5922 φ5928 φ5934 φ5940 φ5946 φ5952 φ5958 φ5964 φ5970 φ5976 φ5982 φ5988 φ5994 φ6000 φ6006 φ6012 φ6018 φ6024 φ6030 φ6036 φ6042 φ6048 φ6054 φ6060 φ6066 φ6072 φ6078 φ6084 φ6090 φ6096 φ6102 φ6108 φ6114 φ6120 φ6126 φ6132 φ6138 φ6144 φ6150 φ6156 φ6162 φ6168 φ6174 φ6180 φ6186 φ6192 φ6198 φ6204 φ6210 φ6216 φ6222 φ6228 φ6234 φ6240 φ6246 φ6252 φ6258 φ6264 φ6270 φ6276 φ6282 φ6288 φ6294 φ6300 φ6306 φ6312 φ6318 φ6324 φ6330 φ6336 φ6342 φ6348 φ6354 φ6360 φ6366 φ6372 φ6378 φ6384 φ6390 φ6396 φ6402 φ6408 φ6414 φ6420 φ6426 φ6432 φ6438 φ6444 φ6450 φ6456 φ6462 φ6468 φ6474 φ6480 φ6486 φ6492 φ6498 φ6504 φ6510 φ6516 φ6522 φ6528 φ6534 φ6540 φ6546 φ6552 φ6558 φ6564 φ6570 φ6576 φ6582 φ6588 φ6594 φ6600 φ6606 φ6612 φ6618 φ6624 φ6630 φ6636 φ6642 φ6648 φ6654 φ6660 φ6666 φ6672 φ6678 φ6684 φ6690 φ6696 φ6702 φ6708 φ6714 φ6720 φ6726 φ6732 φ6738 φ6744 φ6750 φ6756 φ6762 φ6768 φ6774 φ6780 φ6786 φ6792 φ6798 φ6804 φ6810 φ6816 φ6822 φ6828 φ6834 φ6840 φ6846 φ6852 φ6858 φ6864 φ6870 φ6876 φ6882 φ6888 φ6894 φ6900 φ6906 φ6912 φ6918 φ6924 φ6930 φ6936 φ6942 φ6948 φ6954 φ6960 φ6966 φ6972 φ6978 φ6984 φ6990 φ6996 φ7002 φ7008 φ7014 φ7020 φ7026 φ7032 φ7038 φ7044 φ7050 φ7056 φ7062 φ7068 φ7074 φ7080 φ7086 φ7092 φ7098 φ7104 φ7110 φ7116 φ7122 φ7128 φ7134 φ7140 φ7146 φ7152 φ7158 φ7164 φ7170 φ7176 φ7182 φ7188 φ7194 φ7200 φ7206 φ7212 φ7218 φ7224 φ7230 φ7236 φ7242 φ7248 φ7254 φ7260 φ7266 φ7272 φ7278 φ7284 φ7290 φ7296 φ7302 φ7308 φ7314 φ7320 φ7326 φ7332 φ7338 φ7344 φ7350 φ7356 φ7362 φ7368 φ7374 φ7380 φ7386 φ7392 φ7398 φ7404 φ7410 φ7416 φ7422 φ7428 φ7434 φ7440 φ7446 φ7452 φ7458 φ7464 φ7470 φ7476 φ7482 φ7488 φ7494 φ7500 φ7506 φ7512 φ7518 φ7524 φ7530 φ7536 φ7542 φ7548 φ7554 φ7560 φ7566 φ7572 φ7578 φ7584 φ7590 φ7596 φ7602 φ7608 φ7614 φ7620 φ7626 φ7632 φ7638 φ7644 φ7650 φ7656 φ7662 φ7668 φ7674 φ7680 φ7686 φ7692 φ7698 φ7704 φ7710 φ7716 φ7722 φ7728 φ7734 φ7740 φ7746 φ7752 φ7758 φ7764 φ7770 φ7776 φ7782 φ7788 φ7794 φ7800 φ7806 φ7812 φ7818 φ7824 φ7830 φ7836 φ7842 φ7848 φ7854 φ7860 φ7866 φ7872 φ7878 φ7884 φ7890 φ7896 φ7902 φ7908 φ7914 φ7920 φ7926 φ7932 φ7938 φ7944 φ7950 φ7956 φ7962 φ7968 φ7974 φ7980 φ7986 φ7992 φ7998 φ8004 φ8010 φ8016 φ8022 φ8028 φ8034 φ8040 φ8046 φ8052 φ8058 φ8064 φ8070 φ8076 φ8082 φ8088 φ8094 φ8100 φ8106 φ8112 φ8118 φ8124 φ8130 φ8136 φ8142 φ8148 φ8154 φ8160 φ8166 φ8172 φ8178 φ8184 φ8190 φ8196 φ8202 φ8208 φ8214 φ8220 φ8226 φ8232 φ8238 φ8244 φ8250 φ8256 φ8262 φ8268 φ8274 φ8280 φ8286 φ8292 φ8298 φ8304 φ8310 φ8316 φ8322 φ8328 φ8334 φ8340 φ8346 φ8352 φ8358 φ8364 φ8370 φ8376 φ8382 φ8388 φ8394 φ8400 φ8406 φ8412 φ8418 φ8424 φ8430 φ8436 φ8442 φ8448 φ8454 φ8460 φ8466 φ8472 φ8478 φ8484 φ8490 φ8496 φ8502 φ8508 φ8514 φ8520 φ8526 φ8532 φ8538 φ8544 φ8550 φ8556 φ8562 φ8568 φ8574 φ8580 φ8586 φ8592 φ8598 φ8604 φ8610 φ8616 φ8622 φ8628 φ8634 φ8640 φ8646 φ8652 φ8658 φ8664 φ8670 φ8676 φ8682 φ8688 φ8694 φ8700 φ8706 φ8712 φ8718 φ8724 φ8730 φ8736 φ8742 φ8748 φ8754 φ8760 φ8766 φ8772 φ8778 φ8784 φ8790 φ8796 φ8802 φ8808 φ8814 φ8820 φ8826 φ8832 φ8838 φ8844 φ8850 φ8856 φ8862 φ8868 φ8874 φ88			

# SHR Series 180° Angular Style Air Gripper



## Main Dimension

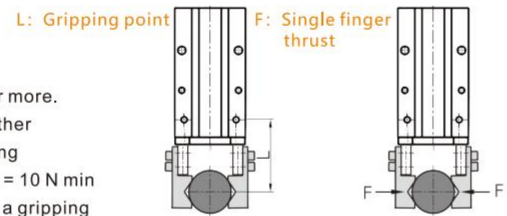


Bore/Sign	A	AB	B	C	CA	CB	D	DA	E	EA	EB	J	JA	JB	K	KA	KB	L	LA	LB	LC
SHR10	71	58	15	30	22	23.5	6	4	M3X0.5	3	6	Ø3.4	18	24	M3X0.5	6	35	M3X0.5	6	24	9
SHR16	84	69	20	38	28	28.5	8	5	M3X0.5	4	7	Ø4.5	20	30	M4X0.7	8	41	M4X0.7	8	30	12
SHR20	106	86	26	48	36	37	10	8	M4X0.7	5	9	Ø5.5	25	36	M5X0.8	10	50	M5X0.8	10	38	16
SHR25	131	107	30	58	45	45	12	10	M5X0.8	6	12	Ø6.6	30	42	M6X1.0	12	60	M6X1.0	12	46	18
Bore/Sign	M	MA	MB	MC	N	NA	P	PA	PB	PC	Y	YA	YB	YC	YD						
SHR10	M3X0.5	4	9	30	Ø11 <sup>+0.05</sup> <sub>0</sub>	1.7	M5X0.8	7	23	3	3 <sup>+0.03</sup> <sub>0</sub>	3	4	9	47.5						
SHR16	M4X0.7	5	12	33	Ø17 <sup>+0.05</sup> <sub>0</sub>	2	M5X0.8	7	25	8	3 <sup>+0.03</sup> <sub>0</sub>	3	4	15	55.5						
SHR20	M5X0.8	8	14	42	Ø21 <sup>+0.05</sup> <sub>0</sub>	2	M5X0.8	8	32	12	4 <sup>+0.03</sup> <sub>0</sub>	4	5	19	69						
SHR25	M6X1.0	10	16	50	Ø26 <sup>+0.05</sup> <sub>0</sub>	2	M5X0.8	8	42	14	4 <sup>+0.03</sup> <sub>0</sub>	4	5	23	86						

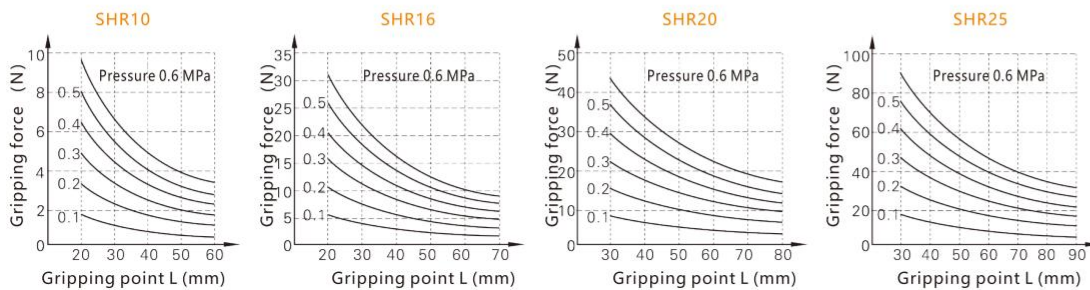
## How to select product

### 1. Confirmation of effective gripping force

- 1.1 Although the coefficient of friction between the attachments and the workpiece differ, select a model that can provide a gripping force of 10 to 20 times the workpiece mass, or more.
- 1.2 If high acceleration, deceleration or impact forces are encountered during motion, a further margin of safety should be considered. Example) given workpiece mass: 0.05kgs, gripping point L: 30mm, the pressure: 5kgf/cm<sup>2</sup> Required gripping force = 0.05 kg x 20 x 9.8 m/s<sup>2</sup> = 10 N min  
Model selection: HFR16 is recommended. The gripping force is 17N, therefore satisfies a gripping force setting value of 20 times or more
- 1.3 The effective gripping force shown in the graphs to the right is expressed as F, when both fingers and attachments are in full contact with the workpiece.

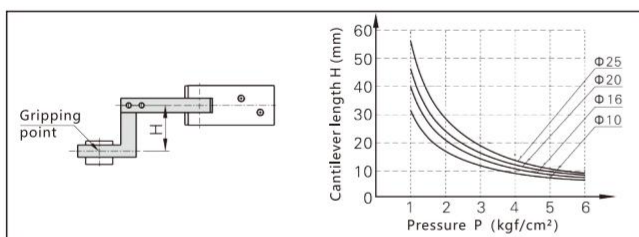


### 2. Connection between gripping force and gripping point distance



### 3. The selection of the gripping point

- 3.1 Workpiece should be held at a point within the range of overhanging distance (H) for a given pressure indicated in the tables below. When the workpiece is held at a point outside of the recommended range for a given pressure, it may cause adverse effect on the product life.
- 3.2 Within the allowable range of gripping point, the fixture shall be shore and light; when it is long and heavy, the inertia force when finger open and close, it will influence the performance and lifetime of the fingers at the same time.



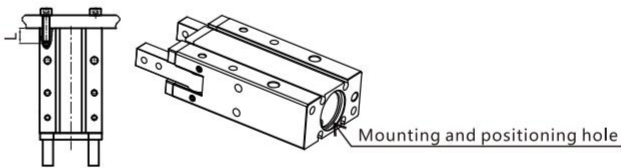
# SHR Series 180° Angular Style Air Gripper



## Installation and application

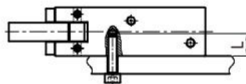
- Due to the abrupt changes, the pressure is low, which will lead to the decrease of the gripping force and falling of the work-pieces. In order to avoid the harm to the human body and damage to the equipment, anti-dropping device must be equipped.
- Don't use the air gripper under strong external force and impact force.
- When install and fix the air gripper, avoid falling down, collision and damage.
- When fixing the gripping jaw parts, don't twist the gripping jaw.
- There are several kinds of installation method, and the torque of fastening screw must be within the prescribed moment range shown in the below chart. If the locking moment is too large, it will cause the dysfunctional. If the locking moment is too small, it will cause the position deviation and fall.

### Tail Mounting Type



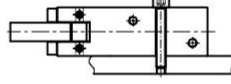
Bore	Bolt Size	Max.Locking Torque (Nm)	Max.Screwed Depth L (mm)	Tail Positioning Bore Dia(mm)	Tail positioning Depth(mm)
10	M3X0.5	1	6	φ 11	1.5
16	M4X0.7	2	8	φ 17	2
20	M5X0.8	4.5	10	φ 21	2
25	M6X1.0	7	12	φ 26	2

### Mounting by front tapped hole



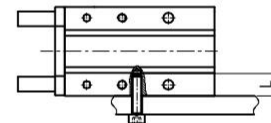
Bore	Bolt Size	Max.Locking Torque (Nm)	Max.Screwed Depth L (mm)
10	M3X0.5	0.9	6
16	M4X0.7	1.6	8
20	M5X0.8	3.3	10
25	M6X1.0	5.9	12

### Mounting by front through hole



Bore	Bolt Size	Max.Locking Torque (Nm)
10	M3X0.5	1
16	M4X0.7	2
20	M5X0.8	4.5
25	M6X1.0	7

### Mounting by side tapped hole



Bore	Bolt Size	Max.Locking Torque (Nm)	Max.Screwed Depth L (mm)
10	M3X0.5	0.6	4
16	M4X0.7	1.5	5
20	M5X0.8	3.5	8
25	M6X1.0	6	10

- The installation method of the gripping jaw fittings. When install the gripping jaw fittings, you have to pay particular attention that you can only hold the gripping jaw by using spanner, and then lock the screws with allen wrench. Never clamp the body directly and then lock the screws, otherwise the parts will be easily damaged. Please refer to below chart for the locking torque.
- When gripping, the workpiece must be located in the center line between fingers, and the two fingers shall touch the workpiece at the same time, otherwise they could easily get broken.
- Confirm that there is no additional external forces exerted on the fingers. Transverse load acts on the fingers, which will cause impact load, leading to the shaking and damage of gripping jaw. Equip with gaps so that the air gripper will not crash into work-pieces and accessories at the end of its trip.
- When workpieces inserted, the center line should be coaxial, no offset, in case there are additional external force generated on the jaw. When testing, it is specially required that the manual operation should be reduced and the pressure should be used to run it at a low speed, and guarantee the safety and no impact.
- Please use the flow control valve to adjust the opening and closing speed of gripping jaw if too fast.
- People cannot enter the movement path of air gripper and articles cannot be placed on the path too.
- Before removing the air gripper, please confirm that it is out of working state, and then discharge of compressed air.

Bore	Bolt Size	Max.Locking Torque (Nm)
10	M3X0.5	0.6
16	M3X0.5	0.6
20	M4X0.7	0.8
25	M5X0.8	1.5

