

HX-29

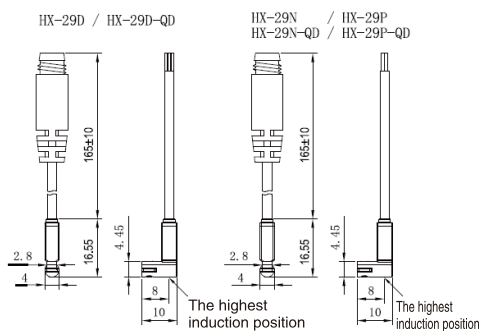
Magnet Switch



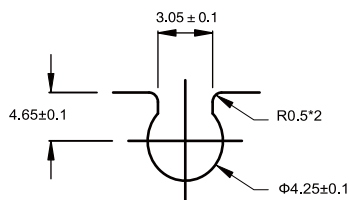
How to Order?

HX	-	29	D	-	2M
Product code	Series NO.	Switch Type	Wire length		
		D: Two wire without contact switch	2M: 2M		
		N: NPN type	5M: 5M		
		P: PNP type	10M: 10M		
		R: Two wire reed switch		
			QD8: QD8 Male connector		
			QD12: QD12 Male connector		
			Note: The standard wire length of the quick connector is 0.15m. Other wire lengths cannot be ordered		

Dimension

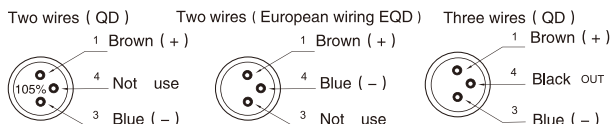


Groove Dimension



Suitable for cylinder:
 SQ/SQM/EU/EUK/
 EUM/EUP/SF/SFM/
 SQK/SG//EMQ/ELS/
 ELQ/EXH/ESWT
 *SHY/SHZ(except Φ 10)

M8/M12 male wiring diagram



Specifications

Type	HX-29D	HX-29N	HX-29P
Connect Diagram			
Parameter			
Wiring method	2-Wire Type	3-Wire Type	
Switching logic	Electronic no contact type N.O.		
Sensor type	None contact type	NPN type (Input)	PNP type (Output)
Operating voltage	10-28V DC	5-30V DC	
Max. switching current	50mA max	200mA max.	
Contact rating	1.4 W max	6W max.	
Current consumption	40 μA max @ 24V	8mA max @ 24V (Switch Active)	
Voltage drop	2.8 V max.	1 V max. @ 200mA DC	
Leakage current	90 μA max @ 28V	0.01mA max.	
Indicator	Red LED		
Max. exchange frequency	1000Hz		
Temperature range	-10 - 70°C		
Shock	50G		
Vibration	9G		
Enclosure classification	IEC 529 IP67 (NEMA 6)		
Protection circuit	4	3, 4	
Cable	2.6 Φ, 2C, Black color, oil resistance PVC	2.6 Φ, 3C, Black color, oil resistance PVC	
Switch sensitive	40-750G		

Note: 1= none /2= output short circuit protection /3= power reverse protection /4= surge absorption protection