

# ERM1100 Compact Manifold MINI Pressure Regulator

## ERM1100

### Compact Manifold MINI Pressure Regulator



#### Product Features

- The integrated design makes installation easier and saves space.
- There are many options for piping position and port size.
- Good pressure characteristics, large flow.
- Pressure sensing and one-click on-off functions are available.

#### How to Order?

**ERM1100AF**

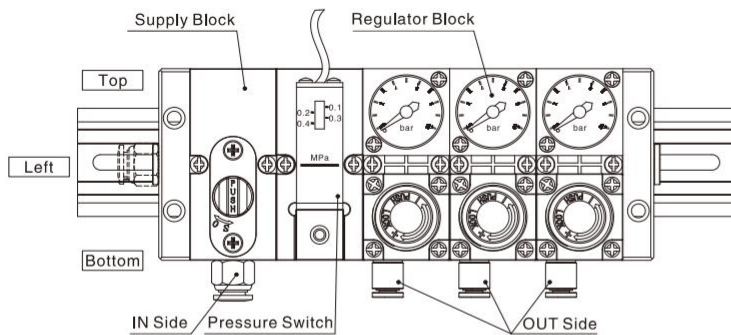
ERM1100AF: Compact Manifold MINI Pressure Regulator Common Supply Type with Front Knob Position

Series NO.	IN/OUT Piping Position	Pipe Size	Regulator Block Stations	Mounting Type	Unit Representation	Accessories																																																																																																				
	<table border="1"> <thead> <tr> <th rowspan="2">Position Symbol</th> <th colspan="2">IN side</th> <th colspan="2">OUT side</th> <th rowspan="2"></th> </tr> <tr> <th>Left</th> <th>Bottom</th> <th>Bottom</th> <th>Top</th> </tr> </thead> <tbody> <tr> <td>1</td> <td></td> <td>●</td> <td>●</td> <td></td> <td>with Supply Block</td> </tr> <tr> <td>2</td> <td></td> <td>●</td> <td></td> <td>●</td> <td>with Supply Block</td> </tr> <tr> <td>3</td> <td>●</td> <td></td> <td>●</td> <td></td> <td>without Supply Block</td> </tr> <tr> <td>4</td> <td>●</td> <td></td> <td></td> <td>●</td> <td>without Supply Block</td> </tr> </tbody> </table>	Position Symbol	IN side		OUT side			Left	Bottom	Bottom	Top	1		●	●		with Supply Block	2		●		●	with Supply Block	3	●		●		without Supply Block	4	●			●	without Supply Block	<table border="1"> <thead> <tr> <th rowspan="2">Pipe size Symbol</th> <th colspan="3">IN side</th> <th colspan="2">OUT side</th> </tr> <tr> <th>Ø6</th> <th>Ø8</th> <th>Ø10</th> <th>Ø4</th> <th>Ø6</th> </tr> </thead> <tbody> <tr> <td>0604</td> <td>●</td> <td></td> <td></td> <td></td> <td>●</td> </tr> <tr> <td>0606</td> <td>●</td> <td></td> <td></td> <td></td> <td>●</td> </tr> <tr> <td>0804</td> <td></td> <td>●</td> <td></td> <td>●</td> <td></td> </tr> <tr> <td>0806</td> <td></td> <td>●</td> <td></td> <td>●</td> <td></td> </tr> <tr> <td>1004</td> <td></td> <td></td> <td>●</td> <td>●</td> <td></td> </tr> <tr> <td>1006</td> <td></td> <td></td> <td>●</td> <td>●</td> <td></td> </tr> </tbody> </table>	Pipe size Symbol	IN side			OUT side		Ø6	Ø8	Ø10	Ø4	Ø6	0604	●				●	0606	●				●	0804		●		●		0806		●		●		1004			●	●		1006			●	●		Blank: with DIN rail J: without DIN rail (Direct mounting type)	1:MPa 2:bar 3:psi	<table border="1"> <thead> <tr> <th rowspan="2">Accessories Symbol</th> <th>without Accessories</th> <th>Supply Block</th> <th>Pressure Switch</th> </tr> </thead> <tbody> <tr> <td>N</td> <td>●</td> <td></td> <td></td> </tr> <tr> <td>K</td> <td></td> <td></td> <td>●</td> </tr> <tr> <td>L</td> <td></td> <td>●</td> <td></td> </tr> <tr> <td>M</td> <td></td> <td>●</td> <td>●</td> </tr> </tbody> </table>	Accessories Symbol	without Accessories	Supply Block	Pressure Switch	N	●			K			●	L		●		M		●	●
Position Symbol	IN side		OUT side																																																																																																							
	Left	Bottom	Bottom	Top																																																																																																						
1		●	●		with Supply Block																																																																																																					
2		●		●	with Supply Block																																																																																																					
3	●		●		without Supply Block																																																																																																					
4	●			●	without Supply Block																																																																																																					
Pipe size Symbol	IN side			OUT side																																																																																																						
	Ø6	Ø8	Ø10	Ø4	Ø6																																																																																																					
0604	●				●																																																																																																					
0606	●				●																																																																																																					
0804		●		●																																																																																																						
0806		●		●																																																																																																						
1004			●	●																																																																																																						
1006			●	●																																																																																																						
Accessories Symbol	without Accessories	Supply Block	Pressure Switch																																																																																																							
	N	●																																																																																																								
K			●																																																																																																							
L		●																																																																																																								
M		●	●																																																																																																							

Fitting type: Straight

≥2 Station 6:6 Station  
 2:2 Station 7:7 Station  
 3:3 Station 8:8 Station  
 4:4 Station 9:9 Station  
 5:5 Station 10:10 Station

Note: Factory default set pressure range 0.1-0.4Mpa, wire length 0.5m, scale plate pressure unit Mpa; If you need other specifications, please consult with E-MC.



#### Order Example:

Compact manifold MINI pressure regulator common supply type with front knob position, IN side pipe position on the bottom, OUT side pipe position on the bottom, pipe size IN-Ø6 OUT-Ø6, the quantity of regulator block is 3 stations, with DIN rail, scale unit is MPa, with supply block and pressure switch. Order code is: ERM1100AF-1-0606-3-1-M

**ERM1100BF**

ERM1100BF: Compact Manifold MINI Pressure Regulator Individual Supply Type with Front Knob Position

Series NO.	IN/OUT Piping Position	Pipe Size	Regulator Block Stations	Mounting Type	Unit Representation																																																										
	<table border="1"> <thead> <tr> <th rowspan="2">Position Symbol</th> <th colspan="2">IN side</th> <th colspan="2">OUT side</th> <th rowspan="2"></th> </tr> <tr> <th>Bottom</th> <th>Top</th> <th>Bottom</th> <th>Top</th> </tr> </thead> <tbody> <tr> <td>1</td> <td>●</td> <td></td> <td>●</td> <td></td> <td></td> </tr> <tr> <td>2</td> <td></td> <td>●</td> <td></td> <td>●</td> <td></td> </tr> <tr> <td>3</td> <td>●</td> <td></td> <td></td> <td>●</td> <td></td> </tr> <tr> <td>4</td> <td></td> <td>●</td> <td></td> <td>●</td> <td></td> </tr> </tbody> </table>	Position Symbol	IN side		OUT side			Bottom	Top	Bottom	Top	1	●		●			2		●		●		3	●			●		4		●		●		<table border="1"> <thead> <tr> <th rowspan="2">Pipe size Symbol</th> <th colspan="2">IN side</th> <th colspan="2">OUT side</th> </tr> <tr> <th>Ø4</th> <th>Ø6</th> <th>Ø4</th> <th>Ø6</th> </tr> </thead> <tbody> <tr> <td>0404</td> <td>●</td> <td></td> <td></td> <td>●</td> </tr> <tr> <td>0606</td> <td></td> <td>●</td> <td>●</td> <td>●</td> </tr> <tr> <td>0604</td> <td></td> <td>●</td> <td>●</td> <td></td> </tr> </tbody> </table>	Pipe size Symbol	IN side		OUT side		Ø4	Ø6	Ø4	Ø6	0404	●			●	0606		●	●	●	0604		●	●		Blank: with DIN rail J: without DIN rail (Direct mounting type)	1:MPa 2:bar 3:psi	
Position Symbol	IN side		OUT side																																																												
	Bottom	Top	Bottom	Top																																																											
1	●		●																																																												
2		●		●																																																											
3	●			●																																																											
4		●		●																																																											
Pipe size Symbol	IN side		OUT side																																																												
	Ø4	Ø6	Ø4	Ø6																																																											
0404	●			●																																																											
0606		●	●	●																																																											
0604		●	●																																																												

Fitting type: Straight

≥2 Station 6:6 Station  
 2:2 Station 7:7 Station  
 3:3 Station 8:8 Station  
 4:4 Station 9:9 Station  
 5:5 Station 10:10 Station

**Order Example:** Compact Manifold MINI Pressure Regulator Individual Supply Type with Front Knob Position, IN side pipe position on the bottom, OUT side pipe position on the bottom, pipe size IN-Ø6-Ø4, the quantity of regulator block is 5 stations, without DIN rail, scale unit is Bar. Order code is: ERM1100BF-1-0604-5-J-2

# ERM1100 Compact Manifold MINI Pressure Regulator



## ERM1100AF Serie Compact Manifold MINI Pressure Regulator Individual Module Ordering

Series NO.	IN/OUT Piping Position	Pipe Size	Unit Representation	R
ERM1100AF: Compact Manifold MINI Pressure Regulator Common Supply Type with Front Knob Position	1: Bottom 2: Top	04: Ø4 06: Ø6	1: MPa 2: bar 3: psi	

ERM1100AF-1-□-2

ERM1100AF-2-□-2

Note: 1. This common supply type valve block cannot be used alone, and requires a specific assembly method to be used.  
2. The air inlet of this common supply type valve block is fixed. The pipe position and pipe size cannot be selected.

## ERM1100BF Serie Compact Manifold MINI Pressure Regulator Individual Module Ordering

Series NO.	IN/OUT Piping Position	Pipe Size	Unit Representation	R																																																					
ERM1100BF: Compact Manifold MINI Pressure Regulator Individual Supply type with Front Knob Position	<table border="1"> <thead> <tr> <th rowspan="2">Position Symbol</th> <th colspan="2">IN side</th> <th colspan="2">OUT side</th> </tr> <tr> <th>Bottom</th> <th>Top</th> <th>Bottom</th> <th>Top</th> </tr> </thead> <tbody> <tr> <td>1</td> <td>●</td> <td></td> <td>●</td> <td></td> </tr> <tr> <td>2</td> <td></td> <td>●</td> <td></td> <td>●</td> </tr> <tr> <td>3</td> <td>●</td> <td></td> <td></td> <td>●</td> </tr> <tr> <td>4</td> <td></td> <td>●</td> <td>●</td> <td></td> </tr> </tbody> </table>	Position Symbol	IN side		OUT side		Bottom	Top	Bottom	Top	1	●		●		2		●		●	3	●			●	4		●	●		<table border="1"> <thead> <tr> <th rowspan="2">Pipe size Symbol</th> <th colspan="2">IN side</th> <th colspan="2">OUT side</th> </tr> <tr> <th>Ø4</th> <th>Ø6</th> <th>Ø4</th> <th>Ø6</th> </tr> </thead> <tbody> <tr> <td>0404</td> <td>●</td> <td></td> <td>●</td> <td></td> </tr> <tr> <td>0606</td> <td></td> <td>●</td> <td></td> <td>●</td> </tr> <tr> <td>0604</td> <td>●</td> <td></td> <td>●</td> <td></td> </tr> </tbody> </table> <p>Fitting type: Straight</p>	Pipe size Symbol	IN side		OUT side		Ø4	Ø6	Ø4	Ø6	0404	●		●		0606		●		●	0604	●		●		1: MPa 2: bar 3: psi	
Position Symbol	IN side		OUT side																																																						
	Bottom	Top	Bottom	Top																																																					
1	●		●																																																						
2		●		●																																																					
3	●			●																																																					
4		●	●																																																						
Pipe size Symbol	IN side		OUT side																																																						
	Ø4	Ø6	Ø4	Ø6																																																					
0404	●		●																																																						
0606		●		●																																																					
0604	●		●																																																						

ERM1100BF-1-□

ERM1100BF-2-□

ERM1100BF-3-□

ERM1100BF-4-□

ERM1100 5

# ERM1100 Compact Manifold MINI Pressure Regulator

## ERM1100AF Serie Supply Block and Pressure Switch

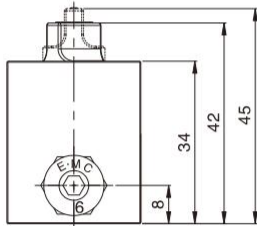
Series NO.	Pipe Size	Type of Accessory	R
------------	-----------	-------------------	---

ERM1100AF: Compact Manifold MINI Pressure Regulator Common Supply Type with Front Knob Position

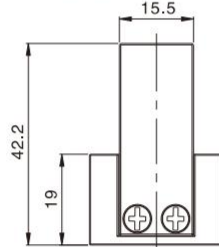
06: Ø6  
08: Ø8  
10: Ø10

V: Supply Block  
P: Pressure Switch  
W: Supply Block+Pressure Switch

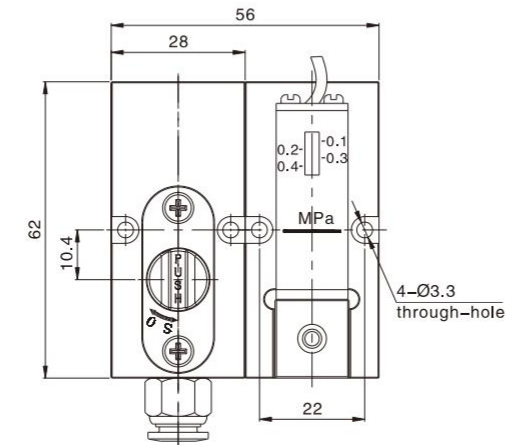
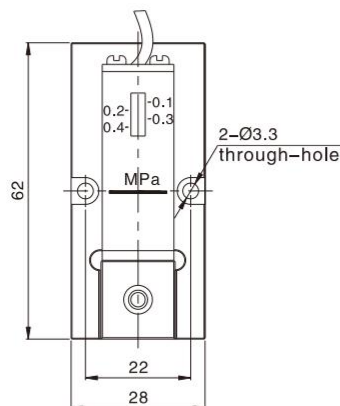
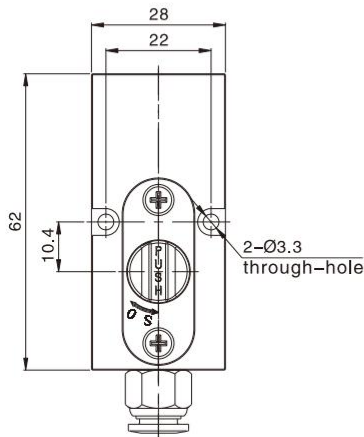
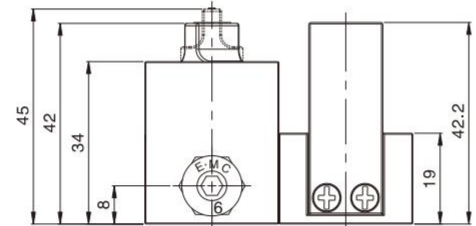
V: Supply Block



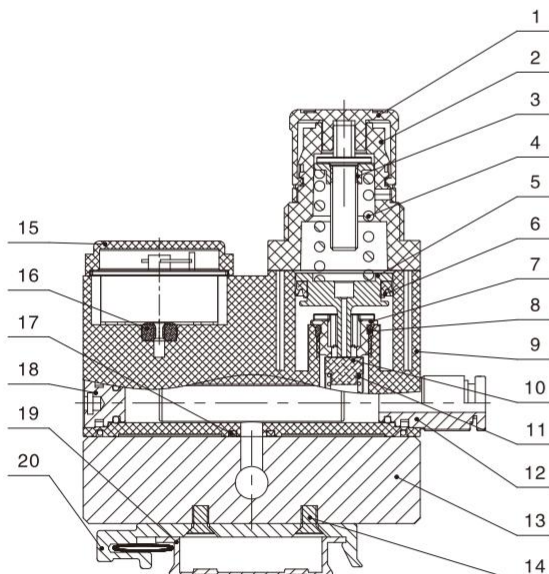
P: Pressure Switch



W: Supply Block+Pressure Switch



## Interior Structure



No.	Description	Material
1	Knob	Plastics
2	Valve Cover	Plastics
3	Adjusting screw assembly	Free Cutting Stainless Steel
4	Spring	SWC
5	Piston	Aluminum Alloy
6	Y-ring	NBR
7	Valve	Plastics
8	O-ring	NBR
9	Valve body	Plastics
10	Connector Washer	NBR
11	Spring	Stainless Steel
12	Fitting	Stainless Steel+Plastics
13	Manifold block	Aluminum Alloy
14	Nut	Stainless Steel
15	Pressure Gage	Plastics+Cu
16	Special-shaped Seal Ring	NBR
17	O-ring	NBR
18	Plug	Aluminum Alloy
19	DIN Rail	Aluminum Alloy
20	DIN Rail Clip	Aluminum Alloy

# ERM1100 Compact Manifold MINI Pressure Regulator



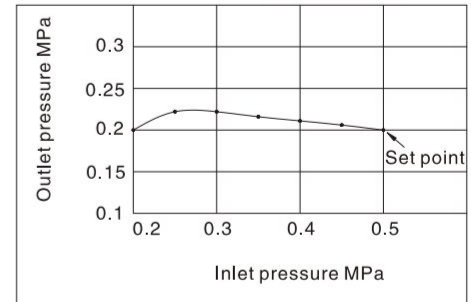
## Specification

Model	ERM1100AF	ERM1100BF
Working Medium	Air	
Regulator construction	Direct acting	
Working principal	Piston type	
Relief mechanism	Relief type	
IN side tubing O.D.	Ø6 Ø8 Ø10	Ø4 Ø6
OUT side tubing O.D.	Ø4 Ø6	
Proof pressure(MPa)	1.5	
Maximum operating pressure(MPa)	1.0	
Set pressure range(MPa)	0.05 ~ 0.7	
Work Temperature(°C)	5 ~ 60	

## Pressure Characteristics

ERM1100AF-1-0804-3-2-M  
(INØ8 · OUTØ4)

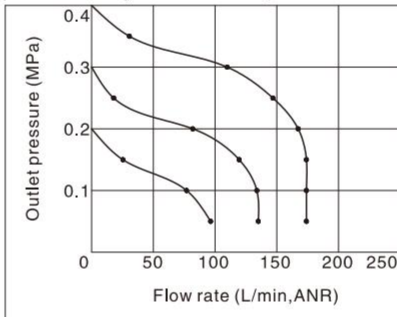
Conditions  
Inlet pressure=0.5MPa  
Outlet pressure=0.2MPa  
Flow rate=20L/min



## Flow Rate Characteristics

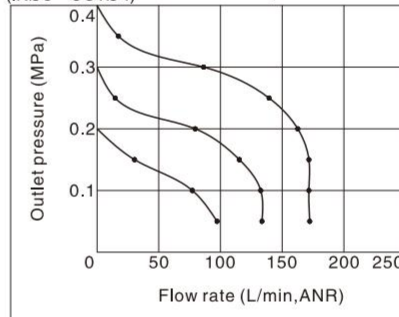
ERM1100AF-1-0604-3-2-M  
(INØ6 · OUTØ4)

Conditions  
Inlet pressure=0.5MPa



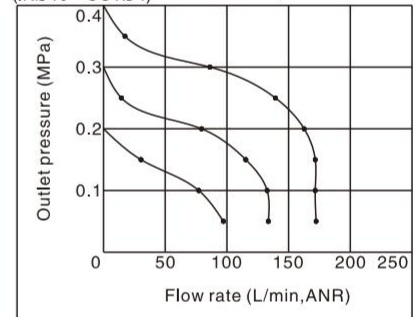
ERM1100AF-1-0804-3-2-M  
(INØ8 · OUTØ4)

Conditions  
Inlet pressure=0.5MPa



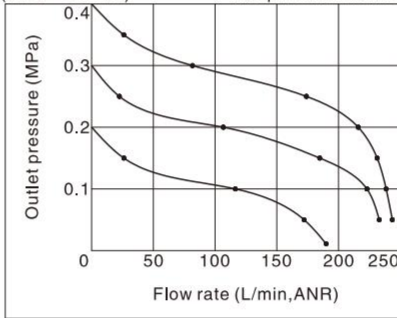
ERM1100AF-1-1004-3-2-M  
(INØ10 · OUTØ4)

Conditions  
Inlet pressure=0.5MPa



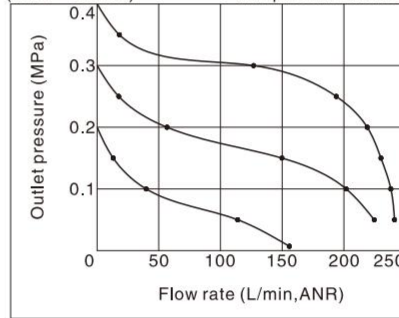
ERM1100AF-1-0606-3-2-M  
(INØ6 · OUTØ6)

Conditions  
Inlet pressure=0.5MPa



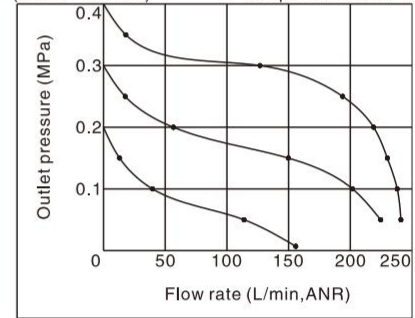
ERM1100AF-1-0806-3-2-M  
(INØ8 · OUTØ6)

Conditions  
Inlet pressure=0.5MPa



ERM1100AF-1-1006-3-2-M  
(INØ10 · OUTØ6)

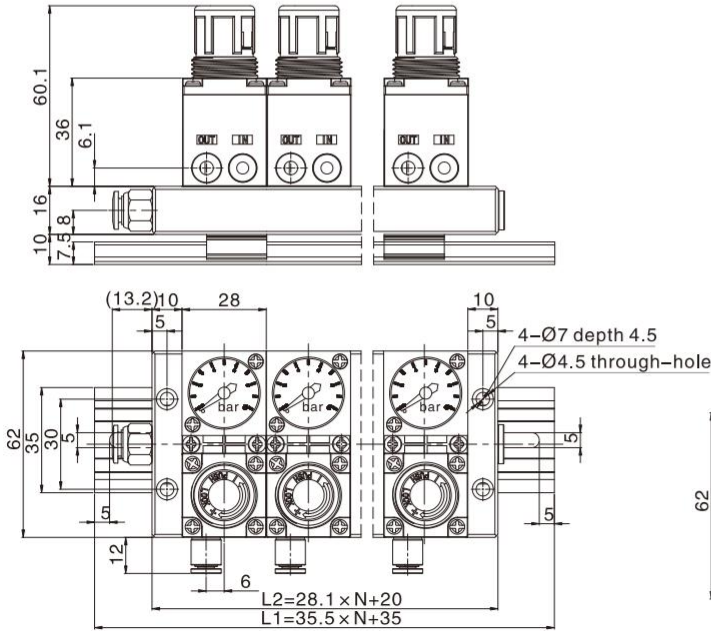
Conditions  
Inlet pressure=0.5MPa



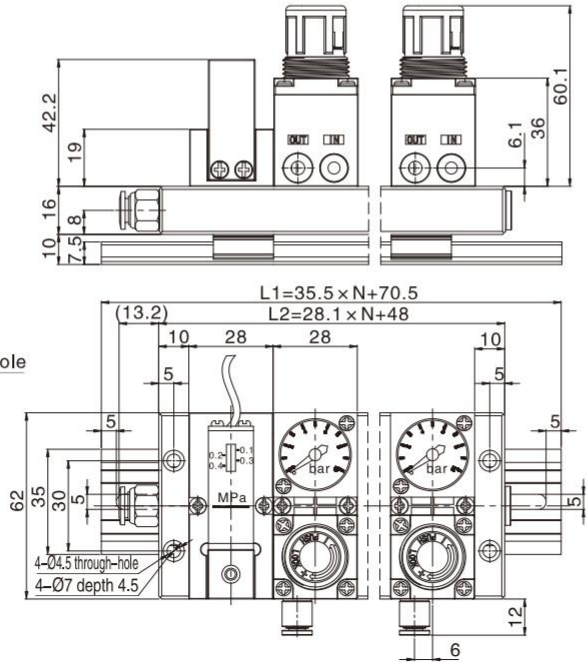
# ERM1100 Compact Manifold MINI Pressure Regulator

## Dimensions

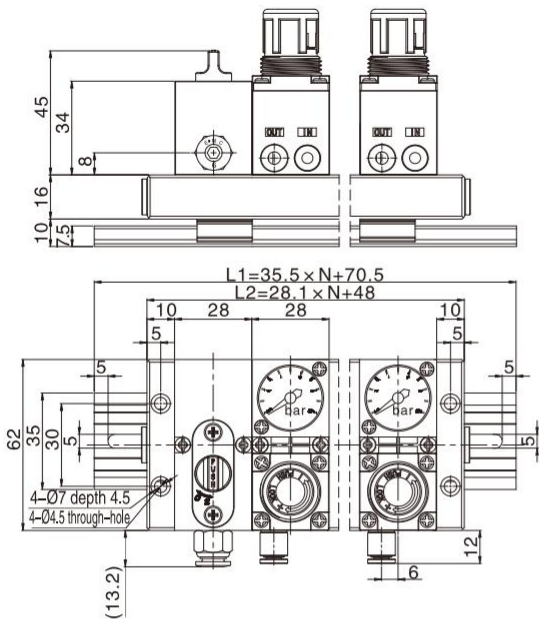
ERM1100AF—without Accessory



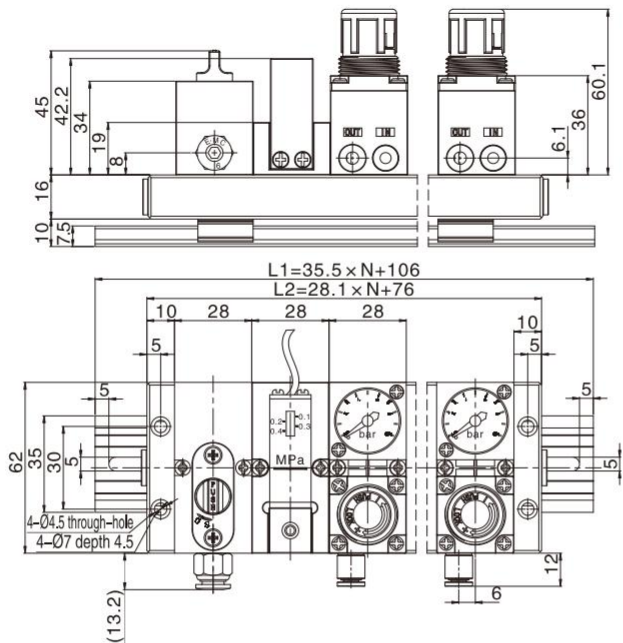
ERM1100AF—with Pressure Switch



ERM1100AF—with Supply Block



ERM1100AF—with Supply Block+Pressure Switch



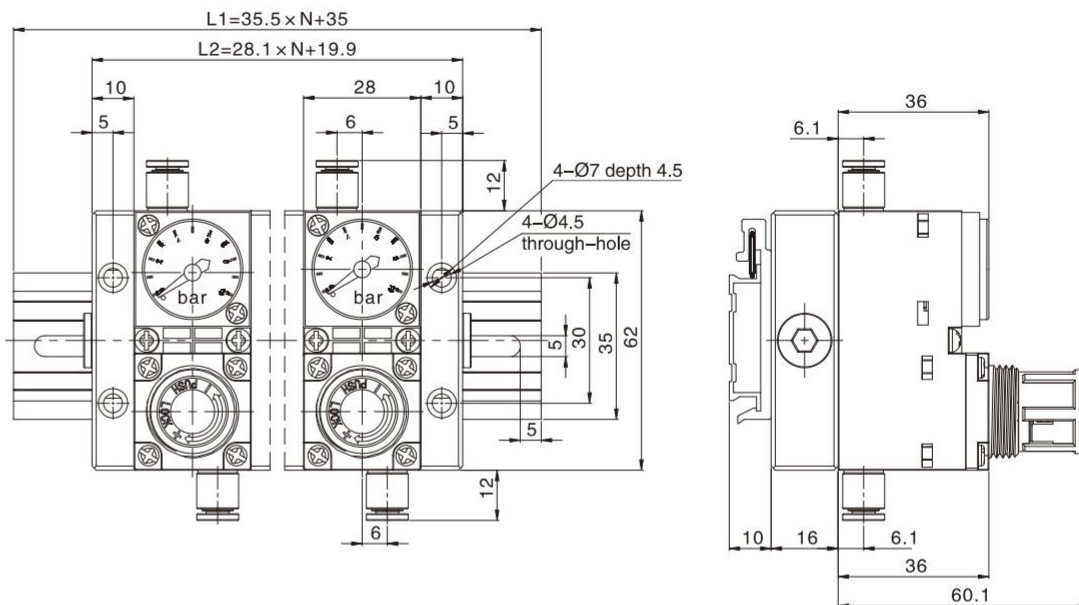
Note: N means regulator block stations

# ERM1100 Compact Manifold MINI Pressure Regulator



## Dimensions

ERM1100BF-3-□-□-2



Note: Compact manifold regulator individual supply Type of other containerized types only has different piping positions, and the other dimensions are the same.

ERM1100 5