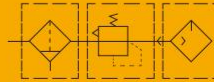


# EI Series Air Preparation Unit



**EIC**  
F.R.L



## Specifications

Model	EIC2000	EIC3000	EIC4000	EIC5000
Proof Pressure(MPa)			1.5	
Working Pressure Range(MPa)			0.15~1.0	
Pressure Adjustment Range(MPa)			0.05~0.9	
Working temperature(°C)			-5~60	
Filter precision			25µm(5 µm is optional)	
Recommended oil			Turbine No.1 Oil ISOVG32	
Bowl material			Polycarbonate	
Bowl guard	None		Available	
Valve type			With overflow	

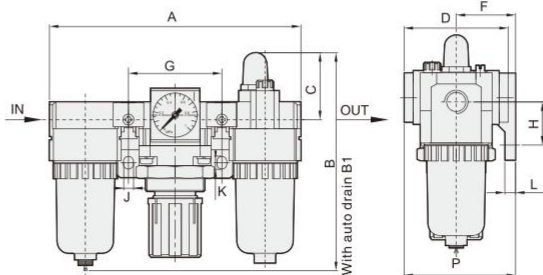
Model	Specifications			* Rated flow (L/min)	* Port size (G)
	Filter	Regulator	Lubricator		
EIC2000-01	EIF2000	EIR2000	EIL2000	1000	1/8
EIC2000-02				1100	1/4
EIC3000-02	EIF3000	EIR3000	EIL3000	1950	1/4
EIC3000-03				2105	3/8
EIC4000-04	EIF4000	EIR4000	EIL4000	5200	1/2
EIC5000-06	EIF5000	EIR5000	EIL5000	6200	3/4
EIC5000-10				6500	1

\* The above information is based on 8.0 Bar supply pressure and 6.3 Bar set pressure

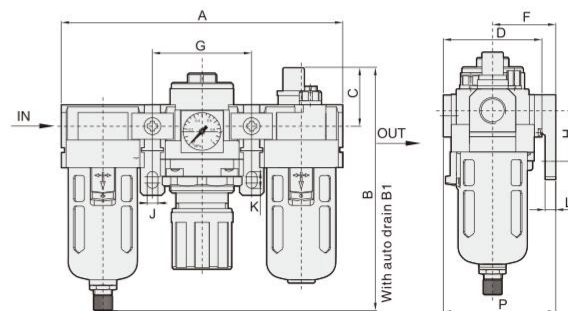
\* NPT,PT port size is optional

## Main Dimension

EIC2000



EIC3000-EIC5000



Model	Port Size (G)	A	B	B1	C	D	F	G	H	J	K	L	P
EIC2000	1/8"-1/4"	140	123	161	37.5	54	30	50	24	5.5	8.5	5	57
EIC3000	1/4"-3/8"	184	157.5	170	39	64	41	65	35	7.5	11	7.2	71
EIC4000	3/8"-1/2"	238	190	194	40	80	50	84	40	9	13	7.2	88
EIC5000	3/4"-1"	300	271.5	274.5	45.5	90	69.8	105	50	12	16	10.5	115

5  
EIC