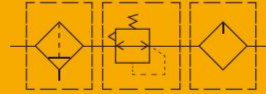


EC
F.R.L



Specifications

| Model | EC1000 | EC2000 | EC3000 | EC4000 | EC5000 |
|-------------------------------|--------------------------|--------|--------|-----------|--------|
| Proof pressure(MPa) | 1.5 | | | | |
| Pressure range(MPa) | 0.15~1.0 | | | | |
| Pressure adjusting range(MPa) | 0.05~0.9 | | | | |
| Working temperature(°C) | -5~60 | | | | |
| Filter precision | 40µm(5 µm is optional) | | | | |
| Recommended oil | Turbine No.1 Oil ISOVG32 | | | | |
| Bowl material | Polycarbonate | | | | |
| Bowl guard | None | | | Available | |
| Pressure adjusting range(MPa) | 0.15~0.85 | | | | |
| Valve type | With overflow | | | | |

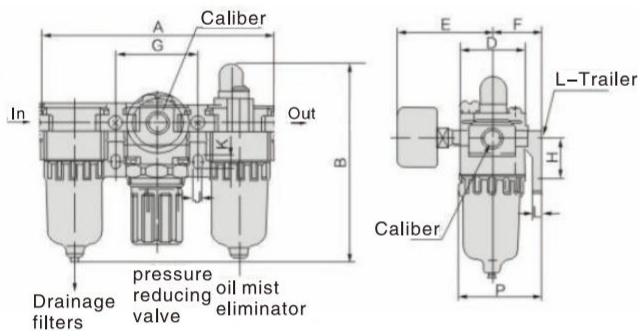
| Model | Specifications | | | | | | | Accessories |
|-----------|----------------|------------|-----------|----------------------|------------------|--------------------------------|-------------|-------------|
| | Assembly | | | * Rated flow (L/min) | ** Port size (G) | Pressure gauge thread size (G) | Weight (kg) | |
| Filter | Regulator | Lubricator | | | | | | |
| EC1000-M5 | EF1000 | ER1000 | EL1000 | 90 | M5 | 1/16 | 0.26 | Y10L |
| EC2000-01 | EF2000 | ER2000 | EL2000 | 1200 | 1/8 | 1/8 | 0.65 | Y20L |
| EC2000-02 | | | | | 1/4 | | | |
| EC3000-02 | EF3000 | ER3000 | EL3000 | 2100 | 1/4 | 1/8 | 1.15 | Y30L |
| EC3000-03 | | | | | 3/8 | | | |
| EC4000-03 | EF4000 | ER4000 | EL4000 | 3400 | 3/8 | 1/4 | 2.15 | Y40L |
| EC4000-04 | | | | | 1/2 | | | |
| EC4000-06 | EF4000-06 | ER4000-06 | EL4000-06 | 4500 | 3/4 | 1/4 | 2.56 | Y50L |
| EC5000-06 | EF5000 | ER5000 | EL5000 | 5000 | 3/4 | 1/4 | 4 | Y60L |
| EC5000-10 | | | | 5000 | 1 | | | |

* The above information is based on 8.0 Bar supply pressure and 6.3 Bar set pressure

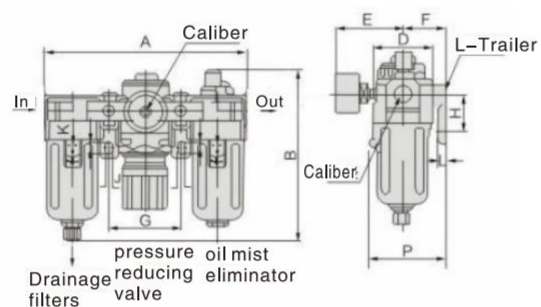
* NPT,PT port size is optional

Main Dimension

EC1000-EC2000



EC3000-EC5000



| Model | Caliber | A | B | C | D | E | F | G | H | J | K | L | P | with auto-drainer |
|--------------|-----------|-----|-------|----|----|------|------|-----|----|-----|-----|----|----|-------------------|
| | | | | | | | | | | | | | | B |
| EC1000-M5 | M5 | 89 | 87 | 25 | 25 | 33.5 | 25.5 | 31 | 20 | 4.5 | 7 | 3 | 41 | 106 |
| EC2000-01/02 | 1/8 · 1/4 | 140 | 124.5 | 39 | 40 | 53 | 30 | 50 | 24 | 5.5 | 8.5 | 5 | 50 | 146 |
| EC3000-02/03 | 1/4 · 3/8 | 182 | 158 | 37 | 53 | 54.5 | 41 | 64 | 35 | 6 | 10 | 7 | 70 | 197 |
| EC4000-03/04 | 3/8 · 1/2 | 238 | 195 | 43 | 70 | 60 | 49 | 84 | 40 | 9 | 13 | 7 | 86 | 213 |
| EC4000-06 | 3/4 | 253 | 197 | 43 | 70 | 66 | 51 | 93 | 40 | 9 | 13 | 8 | 88 | 215 |
| EC5000-06/10 | 3/4 · 1 | 300 | 272 | 47 | 90 | 70 | 68 | 105 | 50 | 12 | 16 | 10 | - | 290 |