

AER/BER Series Air Preparation Unit



AER/BER Regulator



How to Order?

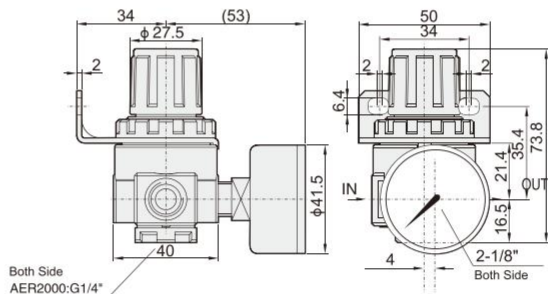
| Series No. | Type Code | Body Size | Pressure Gauge Code | Bracket Code | Scale Unit | Thread Type |
|--|--------------|--|--|--------------------------------------|-----------------------------------|-----------------------------|
| AE: Small body size without bowl guard | R: Regulator | 2000: 1/4" 2000: 1/4" 3000: 3/8" 4000: 1/2" | Blank: With pressure gauge N: No pressure gauge | Blank: With bracket J: No bracket | 4: Mpa/Psi(Default) 5: Bar/Psi | Blank: G P: PT T: NPT |
| BE: Larger body size with bowl guard | | | | | | |

Order Example:

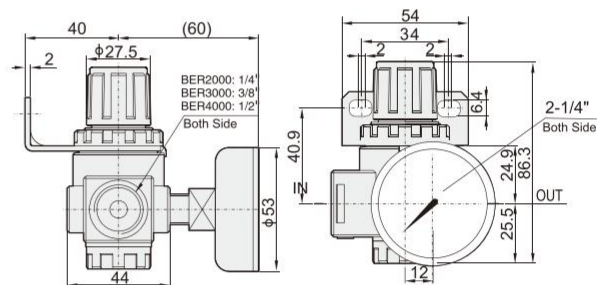
AE series Regulator, 1/4" body size, Mpa/Psi pressure scale unit, PT thread, ERP code is: AEC2000-4-P

Main Dimension

AER2000



BER2000-4000



Specifications

| Model | AER2000 | BER2000 | BER3000 | BER4000 |
|--------------------------------|-----------|---------|---------|---------|
| Working medium | Air | | | |
| Port size | G1/4 | G1/4 | G3/8 | G1/2 |
| Adjusting pressure range (MPa) | 0.05-0.85 | | | |
| Max. adjusting pressure (MPa) | 1.0 | | | |
| Guaranteed pressure (MPa) | 1.5 | | | |
| Working temperature(°C) | 5-60 | | | |
| Weight (g) | 200 | 230 | | |