

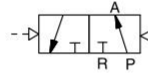
RV

NAMUR Air Control Valve(3/2, 5/2)

RVA Series 3/2



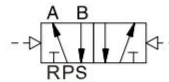
Single Air Control Valve



RVA Series 5/2



Single Air Control Valve



How to Order?

Low Power Solenoid Valve

Series No.	Ways	Positions	Valve body ID code	Controls	Initial Status	Port size	Reset Type	Valve Type	Thread Type
RVA	3: 3 ways 5: 5 ways	2:2 positions	2: 2Series 3: 3Series	1: Single control	3/2 Way Blank:Normal close H:Normal open	2 series 08: 1/4 " 3 series 08: 1/4 " 10: 3/8 "	Q: Air return	M: NAMUR	Blank: G P: PT T: NPT

Order Example:

RV series air control valve, 3/2 ways, 2 series valve body size, normal close, single control, 1/4" port size, gas reset, NAMUR type, PT thread, ERP code is RVA3221-08QM-P

Specifications

Model	RVA5221-08M	RVA5231-08M	RVA5231-10M
Port Size	G1/4(Exhaust G1/8)	G1/4	G3/8(Exhaust G1/4)
Sectional area(mm)	2P: 16(CV=0.89)	2P: 25(CV=1.40)	2P: 30(CV=1.68)
Working Medium	Clean air(After 40 μm filtration)		
Acting type	Outer air control		
Reset type	Air reset		Spring Reset/Air reset
Lubrication	Not Required		
Working Pressure(MPa)	0.15-0.8		
Guaranteed Pressure(MPa)	1.2		
Working Temperature(°C)	-20-70 (No freezing)		
Insulation Class	F Class		
Max.acting frequency	2 Position: 5 Cycles/s		

Note: 2P: 2 Position 3P: 3 Position

RV Series NAMUR Air Control Valve(3/2, 5/2 way)



1
RV NAMUR
(3/2, 5/2, 5/3)

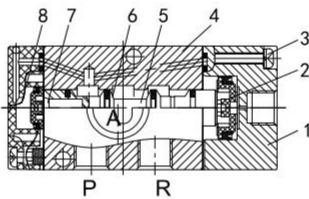
Specifications

Model	RVA3221-08M	RVA3231-08M	RVA3231-10M
Port Size	G1/4	G1/4	G3/8
Sectional area(mm)	16(CV=0.89)	25(CV=1.40)	30(CV=1.68)
Working Medium	Clean air(After 40 μ m filtration)		
Acting type	Outer air control		
Reset type	Air reset		
Lubrication	Not Required		
Working Pressure(MPa)	0.15-0.8		
Guatranteed Pressure(MPa)	1.2		
Working Temperature(°C)	-20-70 (No freezing)		
Max.acting frequency	5 Cycles/s		

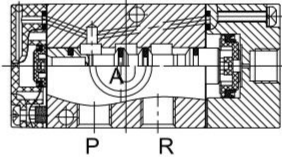
Internal Structure

3/2 Way

Single Air Control(N.C)



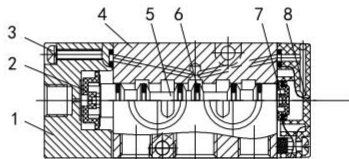
Single Air Control(N.O)



No.	Part Name	Material
1	Air Control Cover	Aluminum alloy
2	Piston	POM
3	Nut	Carbon steel
4	Valve body	Aluminum alloy
5	Spool	Aluminum alloy
6	O-ring	NBR
7	Piston	POM
8	Rear cover	Zinc Alloy

5/2 Way

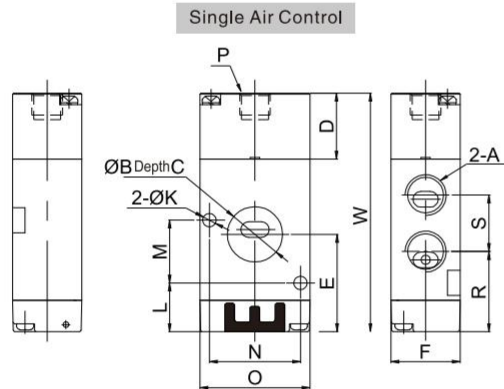
Single Air Control



No.	Part Name	Material
1	Air Control Cover	Aluminum alloy
2	Piston	POM
3	Nut	Carbon steel
4	Valve body	Aluminum alloy
5	Spool	Aluminum alloy
6	O-ring	NBR
7	Piston	POM
8	Rear cover	Zinc Alloy
9	Back seat	Aluminum alloy
10	Spring seat	Aluminum alloy
11	C type buckle	65Mn

Main Dimension

3/2 Way

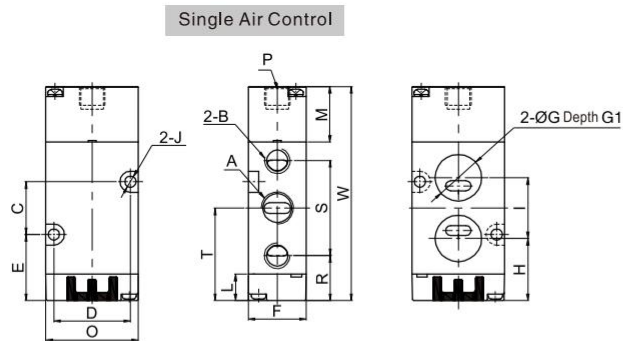


(mm)

Model/Sign	A	B	C	D	E	F	K	L	M	N	O	P	R	S	W	W1*
RVA3221-08QM	G1/4	17.6	1.5	21	31	22	4.3	15.5	20	29	35	G1/8	25.5	18	76	87
RVA3231-08QM	G1/4	19.6	1.5	23	42.1	27	5.2	18.1	24	32	40	G1/8	31.1	21	94.6	106
RVA3231-10QM	G3/8	19.6	1.5	23	42.1	27	5.2	18.1	24	32	40	G1/8	30.1	23	94.6	106

Note: The dimensions of N.O type and N.C type are same, w1 is double control direction valve's dimensions.

5/2 Way



(mm)

Model/Sign	A	B	C	D	E	F	G	G1	H	I	J	M	O	P	R	S	T	W	W1*	W2*
RVA5221-08QM	G1/4	G1/8	20	29	25	22	17.6	1.5	23.5	23	4.3	21	35	G1/8	17	36	35	81	92	111
RVA5231-08QM	G1/4	G1/4	24	32	32.1	27	19.6	1.5	32.1	24	5.2	23	40	G1/8	21.6	45	44.1	99.6	111	130
RVA5231-10QM	G3/8	G1/4	24	32	32.1	27	19.6	1.5	32.1	24	5.2	23	40	G1/8	21.6	45	44.1	99.6	111	130

Note: W1 is double control direction valve's dimensions, W2 is three position air control valve's dimensions.