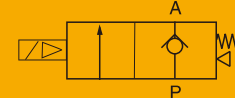
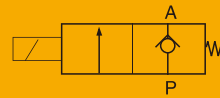


HUS

2/2 Solenoid Valve (N.C.)



How to Order?

Series No.	Port Size	Orifice	Voltage	Body Material
HUS	10: 3/8" 15: 1/2" 20: 3/4" 25: 1" 35: 1-1/4" 40: 1-1/2" 50: 2" F: Flange connections	150=15.0mm 200=20.0mm 250=25.0mm 350=35.0mm 400=40.0mm 500=50.0mm	E1: AC110V E2: AC220V E4: DC24V	S2: SS304 Stainless steel body

Order Example:

HUS series solenoid valve, 2/2, AC110V, 3/8 port size, orifice 15mm, Stainless steel body, ERP code is HUS10-150E1S2

Specifications

Model	Port size	Orifice (mm)	CV	The pressure difference			Max. fluid temperature (°C)
				Min. pressure	Max. working pressure		
			Heat conduction oil		Steam		
HUS10-150E2S2	3/8"	15	4.5	0.5	16	16	250
HUS15-150E2S2	1/2"	15	4.5	0.5	16	16	250
HUS20-200E2S2	3/4"	20	8	0.5	16	16	250
HUS25-250E2S2	1"	25	12	0.5	16	16	250
HUS35-350E2S2	1-1/4"	35	22	0.5	16	16	250
HUS40-350E2S2	1-1/2"	35	22	0.5	16	16	250
HUS50-500E2S2	2"	50	45	0.5	16	16	250
HUSF-250E2S2	Flange	25	12	0.5	16	16	250
HUSF-320E2S2	Flange	32	22	0.5	16	16	250
HUSF-400E2S2	Flange	40	22	0.5	16	16	250
HUSF-500E2S2	Flange	50	45	0.5	16	16	250