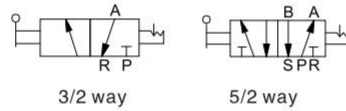


H

Hand Push Valve



Product Features

- 1、The hand push valve uses a manual way to directly control the opening and closing of the spool, and does not rely on external energy sources (such as electricity, air pressure, etc.) to work;
- 2、Due to its relatively simple structure, the hand push valve can still work normally in the case of no power supply or control system failure, with high reliability and self-locking;
- 3、Hand push valve internal parts less, less affected by environmental factors, maintenance is relatively simple, long service life;
- 4、The cost of hand push valve is relatively low, easy to install, the technical requirements of the operator is not high, so it is widely used in many industrial fields and civil facilities.

How to order

Series code and working position and port	Valve body size	Function code	Nozzle diameter	Thread type
3H: 3/2way 4H: 5/2way	2: Series 2 3: Series 3 4: Series 4	10: two-position	Series 2 06:1/8" 08:1/4" Series 3 08:1/4" 10:3/8" Series 4 15:1/2"	Blank: G P: PT T: NPT

Ordering example:

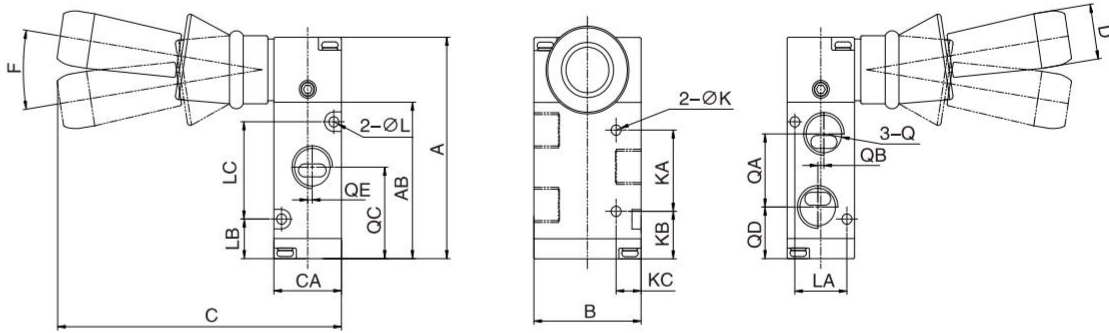
H series hand push valve, 3/2way, 3 series body, nozzle diameter 1/4, G thread, its ERP code is 3H310-08.

Specification

Model number	H series hand push valve
Working medium	Clean air(After 40 μm filtration)
Acting type	External control
Lubrication	unnecessary
Working pressure(Mpa)	0~0.8
Maximum pressure(Mpa)	1.2
Working temperature(°C)	-20~70
Seal material	NBR

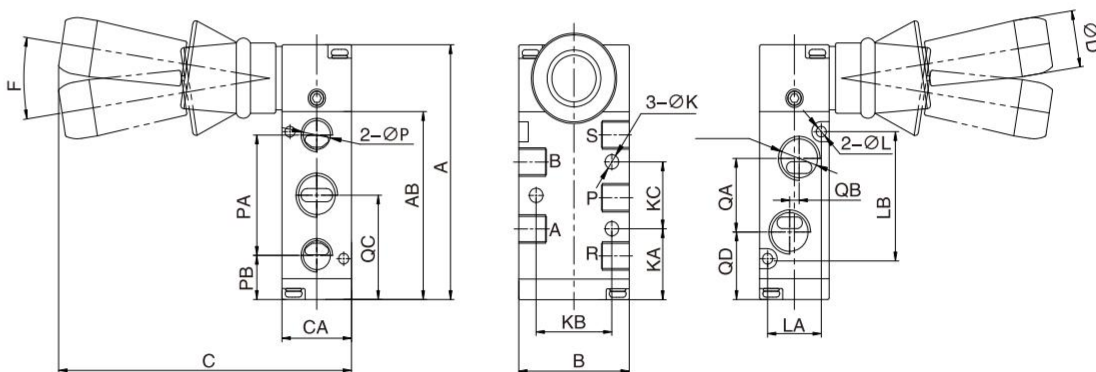
○ Main Dimension

3H Series



Model/Code	A	AB	B	C	CA	D	K	KA	KB	KC	L	LA	LB	LC	Q	QA	QC	QD	QE	F
3H210-06	68.5	48.5	35	93	22	17	4.2	25	15	8.2	3.2	17	12.5	30	1/8	22	27.5	16.5	0	17
3H210-08	68.5	48.5	35	93	22	17	4.2	25	15	8.2	3.2	17	12.5	30	1/4	22.5	28.5	16.2	1.5	17
3H310-08	77.5	57.5	40	96.5	27	17	4.2	30	17.5	10.25	4.2	20	15	35	1/4	24	32.5	20.5	0	20
3H310-10	77.5	57.5	40	96.5	27	17	4.2	30	17.5	10.25	4.2	20	15	35	3/8	24	32.5	20.5	2	20
3H410-15	101	73	50	104	34	17	5.2	50	15.5	13.75	4.2	27	19	43	1/2	36	40.5	22.5	3	25

4H Series



Model/Code	A	AB	B	C	CA	D	K	KA	KB	KC	L	LA	LB	P	PA	PB	Q	QA	QB	QC	QD	F
4H210-06	76.5	56.5	35	93	22	17	4.2	21.5	23.5	20	3.2	17	38	1/8	36	13.5	1/8	18	0	31.5	22.5	17
4H210-08	76.5	56.5	35	93	22	17	4.2	21.5	23.5	20	3.2	17	38	1/8	36	13.5	1/4	21	3	31.5	21	17
4H310-08	92.5	72.5	40	97	27	17	4.2	28	27.5	24	4.2	20	50	1/4	45	17.5	1/4	22	0	40	29	20
4H310-10	92.5	72.5	40	97	27	17	4.2	28	27.5	24	4.2	20	50	1/4	45	17.5	3/8	24	4	40	28	20
4H410-15	130	102	50	104	34	17	5.2	41	33	28	4.2	27	72	1/2	63	23.5	1/2	36	4	55	37	25