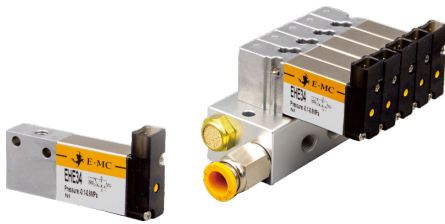
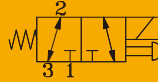


# EHE34 Series 3-way Fast-Switching Valves

## EHE34

### 3-way Fast-switching Valve



#### Product Features

- Direct-acting structural design, ensuring sensitive operation and rapid response;
- Fast response and high-speed switching, with an opening response time of 3.4ms and a closing response time of 2ms;
- Precision die-casting valve body process, achieving a high flow rate of up to 120L/min;
- Coaxial, balanced spool design, high durability and sealing;
- Zero-pressure start, suitable for vacuum;
- 3/2-way valve, versatile for high-speed applications;
- Optional pipe mounting and panel mounting methods; with a manual pushbutton for more convenient operation.

#### How to Order?

##### Valve Slice

Series	Valve Body Type	Port Size	Voltage	Plug-in Wiring
EHE34	A: Tubular M: Manifold (Plate Type Manifold valves require a sub-plate for use)	M5: M5 C4: $\Phi 4$ C6: $\Phi 6$ (Not applicable for manifold type)	E4:DC24V	Blank: Patchcord length is 0.3 meter 0.6M: Patchcord length is 0.6 meter 1M: Patchcord length is 1 meter

**Order Example:** EHE34 series, tubular type, with an M5 connection port diameter, cable length of 0.3 meters, the ERP code: EHE34A-M5E4.

##### Valve Terminal

Series	Valve Body Typ	Quantity	Quantity	Voltage	Inlet and Exhaust Port	Plug-in Wiring	Thread type
EHE34	M: Manifold	Quantity (Valve Position Number)	Quantity (For different specifications when mixed. Not required if the same specification.)	E4:DC24V		Blank: Patchcord length is 0.3 meter 0.6M: Patchcord length is 0.6 meter 1M: Patchcord length is 1 meter	Blank:G

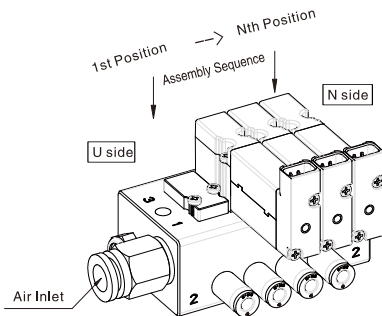
Code	Valve Function
Y	Normally Closed (N.C.)
H	Normally Open (N.O.)
B	Blind Plate

Code	Working Port	Note
06	M5 connection port	Valve Position Number Starting from the U-side as the 1st Position.
C4	$\Phi 4$ Pneumatic Fittings (ZPOC04-M5C)	
C6	$\Phi 6$ Pneumatic Fittings (ZPOC06-M5C)	

Code	Inlet and Exhaust Port	Tubing	Note
Blank	No mufflers, connectors, or plugs on either side;	--	--
U	Muffler and PC connector installed on the U side;	$\Phi 8$	Install a plug on the side opposite the air inlet
N	Muffler and PC connector installed on the N side;		
UN	Mufflers and PC connectors installed on both sides.		
UL	Muffler and PL connector installed on the U side;		
NL	Muffler and PL connector installed on the N side;		
UNL	Mufflers and PL connectors installed on both sides;		
U1	Muffler and POC connector installed on the U side;		
N1	Muffler and POC connector installed on the N side;	$\Phi 10$	Silencer V-08G
UN1	Mufflers and POC connectors installed on both sides;		

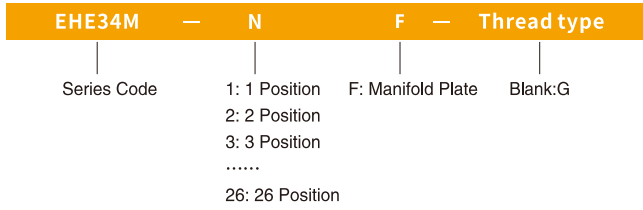


#### Order Example:

EHE34 Series Manifold Type, Standard type, 4-position Normally Closed Valves, 1-position Blind Plate, Working Port  $\Phi 6$  Pneumatic Fittings, Terminal Box Type, Silencer and PC Fittings on Side U, Pneumatic Tube Size  $\Phi 8$ , G-thread, The ERP Code: EHE34M-4YB-C6E4-U.

## Manifold Plate

### Manifold Plate



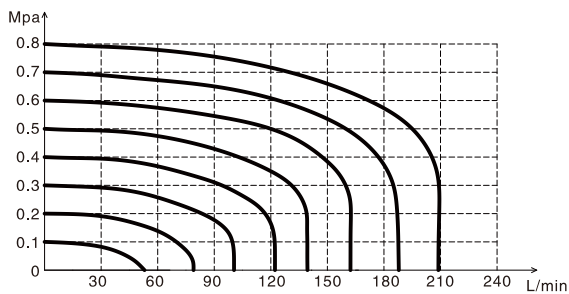
### Blind Plate



## Specification

Model	EHE34A	EHE34M
Working Medium	Dried compressed air filtered through a 40 μ m filter element	
Actuation Type	Direct-acting	
Effective Cross-sectional Area (mm <sup>2</sup> )	2(Cv=0.12)	
Port Size	M5	/
Lubrication	Not required	
Working Pressure (Mpa)	-0.1~0.8	
Maximum Pressure Resistance (Mpa)	1.2	
Operating Temperature (°C)	-20 to 60 (non-freezing).	
Voltage Range	± 10%	
Power Consumption	4W	
Insulation Class	Class F	
Response Time	Open 3.4ms; Close 2ms.	
Weight (g)	34	

## Flow Characteristics

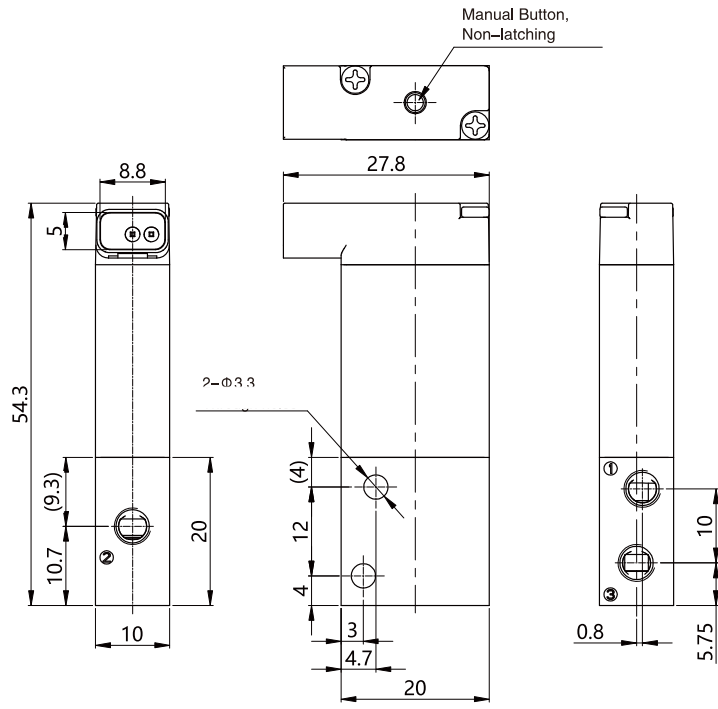


# EHE34 Series 3-way Fast-Switching Valves

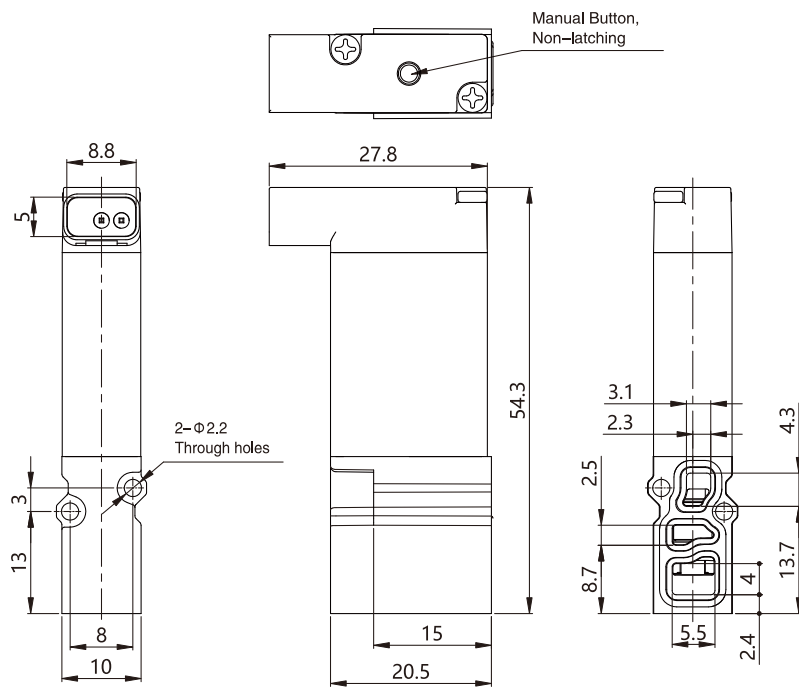


## Dimensions

Single Valve- EHE34A



Single Valve- EHE34M



## Dimensions

### Integrated Valve Group

