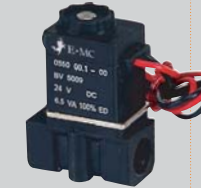


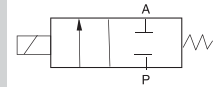
2V025



2V130



2P025



### How to Order?

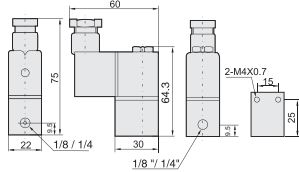
Series No.	Orifice	Port size	ID Code	Voltage	Seal material	Thread type
2V	025: 2.5mm 130: 13mm 250: 25mm	025: 1/2" * 06: 1/8" * 08: 1/4" * 130: 1/2" * 25: 3/8" *	Blank: Standard type N: Low power type	E1: AC110V E2: AC220V E3: AC380V E4: DC24V E5: DC12V E6: AC36V E7: AC24V	Blank: NBR E: EPDM V: VITON	Blank: G P: PT T: NPT

#### Order Example:

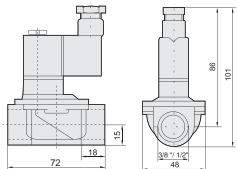
2V series solenoid valve, 13mm orifice, 1/2 port size, standard type, DC24V, EPDM seal, G thread, ERP code is: 2V130-15E4E  
Note: Connection type is DIN connector.

### Main Dimensions

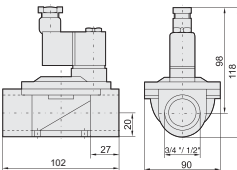
2V025



2V130



2V250



### Product Features

- \* Normal close, brass body
- \* Multiple seals are available for different medium
- \* Sizes range from 1/8" to 1"
- \* Direct acting/diaphragm pilot solenoid valve, with lower working pressure
- \* To reduce the power consumption of 80% energy-saving

### Specifications

Model	2V025-06	2V025-08	2V130-10	2V130-15	2V250-20	2V250-25
Working medium	Air, Water, Steam					
Acting type	Direct acting type, N.C.			Pilot type, N.C.		
Orifice(mm)	2		13		25	
Cv value	0.23		6		23	
Port size	1/8"   1/4"		3/8"   1/2"		3/4"   1"	
Fluid viscosity	20 CST Below					
Working pressure(Bar)	Air, Water, Oil : 0~8			Air, Water, Oil : 0.5~7		
Guaranteed pressure (Bar)	12			11		
Working temperature (°C)	-5 - 80					
Voltage range	-15 - 10%					
Protect class	IP65					
Power consumption	AC:5VA DC:4.8W					
Insulation	Class F					
Valve body material	Brass					
Seal material	NBR or VITON		NBR			
Shortest activate time	0.05s / second					

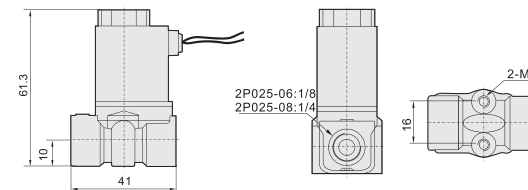
### How to Order?

Series No.	Orifice	Port size	Voltage	Connection type	Seal material	Thread type
2P	025: 2.5mm	06: 1/8" * 08: 1/4" *	E1: AC110V E2: AC220V E3: AC380V E4: DC24V E5: DC12V E6: AC36V E7: AC24V	Blank: DIN connector F: Flying leads	Blank: NBR E: EPDM V: VITON	Blank: G

#### Order Example:

2P series solenoid valve, 2.5mm orifice, 1/8 port size, standard type, DC24V, DIN connection, NBR seal, G thread, ERP code is: 2P025-06E4

### Main Dimensions



### Product Features

- \* Normal close, plastic steel body at low cost
- \* Compact design, space saving
- \* Voltage range available: AC 24V/36V/110V/220V/380V 50/60HZ DC 12V/24V +15%/-10% permitted
- \* Direct acting solenoid valve
- \* To reduce the power consumption of 80% energy-saving

### Specifications

Model	2P025-06E2	2P025-08E2
Working medium	Air, Water, Oil, Gas	
Acting type	Direct acting type, N.C.	
Orifice(mm)	2.5	
Cv value	0.23	
Port size	1/8"	1/4"
Fluid viscosity	Below 20 CST	
Working pressure(Bar)	0-7	
Guaranteed pressure(Bar)	11	
Working temperature (°C)	-5 - 80	
Voltage range	-15 - 10%	
Power consumption	AC:7VA DC:6.5W	
Valve body material	Engineering plastic	
Seal material	NBR, VITON ( optional)	

\* Voltage: AC220V